



2007
*A*NNUAL REPORT



NGĀ PAE O TE **MĀRAMATANGA**
New Zealand's Māori Centre of Research Excellence

Ko te pae tawhiti
arumia kia tata
Ko te pae tata whakamaua
Kia puta i te wheiao
ki te ao mārama

Seek to bring the distant
horizon closer
And grasp the closer horizon,
That you may emerge from
darkness into enlightenment



Bringing research into the school room, Year 12 students from Napier Girls' High, Haylee Andrews and Cassie Aranui have become involved in further environmental studies in school after participating in a project led by Dr James Ataria at the nearby Ahuriri estuary to rehabilitate an important traditional environmental resource.

CONTENTS

| | |
|----|--|
| 1 | 2007 at a glance |
| 3 | Ngā Mōteatea launch |
| 5 | Chair's Report |
| 8 | Joint Directors' Report |
| 10 | Research Programme |
| 11 | Case Study: Homing in on Animal Navigation |
| 12 | Capability Building Programme |
| 13 | Case Study: Everyone was Blown Away |
| 14 | Knowledge Exchange Programme |
| 15 | Case Study: Bellissimo! |
| 16 | Publications |
| 26 | Financial Statements |
| 32 | Staff |

2007: EXPANDED ACHIEVEMENT AND OUTCOMES

Projects continued to deliver strong gains in science, education, health and the environment. Visits to our websites grew exponentially. In Venice, crowds hailed a Ngā Pae o te Māramatanga supported exhibit. Internationally, the leading journal *Science* profiled the work of the CoRE and Professor Michael Walker, one of our directors.





2007 AT A GLANCE

Success in TEC funding round

5 academic journal issues,
11 books, 33 research articles

Profile in world-leading journal, *Science*

Success at Venice Biennale

Over 6 million hits on our website

Support to over 300 postgraduate students

Major work translated

International growth for our journal

International Research
Advisory Panel endorsement



A SCHOLARLY ENVIRONMENT THAT DID NOT EXIST BEFORE

We are building a new scholarly environment to foster excellent research, while also reconnecting with long traditions of Māori learning. In 2007, we published the translations of significant works that passed knowledge through generations. And we celebrated the early leaders who pioneered the Māori academic research contribution.



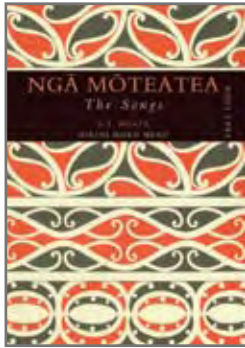
RECONNECTING WITH RICH TRADITIONS

Protecting a Legacy in Order to Go Forward

When, early in the twentieth century, Sir Apirana Ngata began collecting traditional waiata he was responding to a challenge from the New Zealand University Senate to furnish examples of Māori literature. The result was a multi-volume collection, *Ngā Mōteatea: The Songs*, containing transcriptions of an oral storehouse that spanned centuries. It was a legacy that needed protecting, although even Ngata probably did not foresee just how long this process would take.

Over four decades Ngata completed three volumes, including translations into English, before his death in 1950. A fourth and final volume, compiled from his notes, was published in 1990, in te reo Māori. But it was only in 2007, thanks to Ngā Pae o te Māramatanga and Auckland University Press, that the magnificent taonga commenced by Ngata was finally completed with the publication of *Ngā Mōteatea: The Songs, Volume IV* with translations by Emeritus Professor Hirini Moko Mead, and scholarly editing by Professor Margaret Mutu (Ngāti Kahu, Te Rarawa, Ngāti Whātua), Jenifer Curnow and Dr Jane McRae.

Ngata said of the songs' keepers: "Their education as Maoris and as members of the Maori society they adorned far surpassed the attainments of those who passed through the schools in preparation for the society which Western civilisation has imposed."



The waiata, says Professor Mutu, contain generations of historical, cosmological, and cultural knowledge, and "some of the finest Māori poetical language known". Hirini Mead, she believes, was perhaps the only modern scholar capable of delivering a faithful result. This required "incredible attention to detail" and an understanding that allowed the songs to call again from a rich past.

Ngā Mōteatea: The Songs, Volume IV
Polynesian Society, Auckland University Press.

LINKING ERAS OF SCHOLARSHIP

Honouring the Taonga Tuku Iho

As has long been noted, all scholars build on the work of others. A real highlight for Ngā Pae o te Māramatanga in 2007 was the success of our inaugural Te Puāwaitanga Research Excellence Awards, where we honoured the work of outstanding academics. While their research is original, it is also linked to an earlier era of scholarship dating directly back to Sir Apirana Ngata – and to generations of Māori knowledge before him.

Celebrating their lifetime achievements, Tohu o te Māramatanga awards were made to Distinguished Professor Hirini Moko Mead, Emeritus Professor Ranginui Walker and the late Emeritus Professors Bruce Biggs and Sir Hugh Kāwharu. Hosting this occasion was an honour for the CoRE and a rare opportunity to acknowledge leaders who will inspire future generations.

Te Puāwaitanga Research Excellence Awards,
Distinguished Professor Hirini Moko Mead and
Emeritus Professor Ranginui Walker.





SUCCESSFUL REGENERATION

In 2007, we welcomed new leaders and farewelled some crucial founders. As the CoRE grew, research outcomes expanded across all disciplines, achieving high levels of recognition. We ended the year looking forward with renewed confidence.



CHAIR'S REPORT

Another Good Year for an Ambitious Vision

As one of eight Centres of Research Excellence supported by the New Zealand Government, Ngā Pae o te Māramatanga is charged with contributing to full participation by Māori in all aspects of society and the economy. It is an ambitious vision. A key achievement in 2007, in delivering on it, was success in winning renewed funding for the CoRE in a national competitive process run by the Tertiary Education Commission (TEC). We are grateful for this funding which, subject to a mid-term review, provides funding committed to 2014. It is a welcome endorsement of what Ngā Pae o te Māramatanga has achieved. It enables us to continue to support excellent research from a Māori perspective and to build on what were again very strong gains in 2007.



In many ways the year marked a transition to a more mature status. It was pleasing to see how successfully the Centre has ceased to be a fledgling, and passed on some of the mantle of its future leadership.

We said farewell to our founding Joint Director, Professor Linda Tuhiwai Smith, as she took up a new role at the University of Waikato. Linda was an inspirational leader at times when inspiration was among our chief assets. We are immensely grateful to her (see page 9). We are very pleased to have been able to appoint Dr Tracey McIntosh (Tūhoe), who brings world-class international and New Zealand research experience, as new Joint Director (see page 9).

In a year when we honoured the legacy of earlier generations of Māori scholars, we also saw on-line contact with new scholars and communities soar. Our new website recorded an extraordinary six million hits, representing many tens of thousands of individual visitors. Our journal was picked up by an international on-line aggregator, and our researchers' achievements led to coverage in *Science*, one of the world's most prestigious publications. While the TEC application was pending we did not run a new research round in 2007, but ongoing projects produced strong outcomes in the sciences, health, education, the Fine Arts and environment.

Gratitude is also due to the superb contribution made by our Board. I'd like to acknowledge Professor Tom Barnes, previously our Acting Chair and then Board member, and Dr Farah Palmer who left at the end of the year. It is a pleasure to welcome Professor John Morrow, who, as Dean of the Faculty of Arts at the University of Auckland, brings valuable experience and expertise. We look forward to having Dr Charles Royal (Ngāti Raukawa, Ngāti Tamaterā, Ngā Puhī) join the Board in 2008. A researcher of traditional Māori knowledge and company director, Charles was previously a member of the Ministry of Research, Science and Technology's Oxygen Group.

As always, challenges remain. Renewed funding is an endorsement and a trust. We will remain diligent in building on gains. Regeneration and rebirth are tests of any new organisation. In 2007 it has been satisfying to see the firm roots Ngā Pae o te Māramatanga has put down, and how widely they are beginning to spread.

Sir Tipene O'Regan

A handwritten signature in black ink that reads 'Tipene O'Regan Kt.'

Chairman

MIHI

Ko te pae tawhiti arumia kia tata
Ko te pae tata whakamaua
Kia puta i te wheiao ki te ao mārama!

E ō tātau tini mate
Kua ngaro atu rā koutou i te tirohanga kanohi
Hoki atu rā ki te tini me te mano e tatari mai rā
Ahakoa tē hoki mai koutou ki tēnei ao
E kore koutou e warewaretia.

E tātau mā, ngā uri whakaheke
E maimoa ana i ngā taonga tuku iho
Kia mau rā ki ēnei taonga
Kei tupono rā ka riro atu hoki i a tātau
Ka noho tahanga ko ngā reanga
Kei te heke mai tonu ki tēnei ao.

Kāti, e hika mā
Koia nei rā te pūrongo-ā-tau
Ā Ngā Pae o te Māramatanga
E whakaatu ana i ngā whāinga i whakatakotoria
Tae noa ki ngā mahi i tutuki me ngā hua i puta
Ko te tino tumanako hoki rā ia
Ka whakawhiti te iwi Māori ki te ao mārama!

Nāreira hoes te waka e hoa mā
I runga i te mōhiotanga anō hoki
Mā te mahi tika, mā te hoe tahi hoki
E ū ai tō tātau waka ki uta
Kei pariparingia hoki e te tai
Ka moana nehu te kura.

Kōkiri! Kōkiri! Kōkiri!





For those who follow. In Otua in Hokianga, Waipapa Rogers was one of many kaumātua and kuia who assisted Dr Mere Kēpa and Dr Paul Reynolds in an ongoing Ngā Pae o te Māramatanga project, *Bring 'Me' Beyond Vulnerability: Elderly Care of Māori, by Māori*, to identify new ways to improve care for elderly Māori in rural areas. Mr Rogers passed on in August 2007 at age 87, and with his family's permission we gratefully acknowledge the help he and many others provided.



Professor Michael Walker
and Dr Tracey McIntosh

JOINT DIRECTORS' REPORT

Renewed Funding and Wider Impact

At Ngā Pae o te Māramatanga we are essentially creating a new scholarly environment where nothing similar previously existed. In some ways this role may be so obvious that it is easy to overlook. But it flows from everything we do. And in 2007 as the CoRE moved through important changes, it was heartening to note just how far we have come in providing what the journal of the AAAS (American Association for the Advancement of Science), *Science* called during the year “a home for Māori research”.

It was a sign of greater maturity that it was possible for our founding Joint Director, Professor Linda Smith, to move on to a new position as Pro Vice Chancellor (Māori) at the University of Waikato. Linda made a profound contribution, as without her the dream behind the CoRE may never have been achieved. Securing this vision, it was also a vital step forward to win renewed funding committed to 2014 in a competitive round from the Tertiary Education Commission.

We also farewelled Simon Rangiwāhia (Programme Officer), Dr Clive Aspin (Senior Research Fellow), Adrienne Pryor (Business Support Manager) and Te Miha Ua-Cookson (Research Fellow). We thank them for their contributions over extended periods and wish them well in all they attempt. We look forward to the arrival of Daniel Patrick as our new Business Support Manager.

With the TEC decision pending, we did not run a 2007 round of research applications. However, existing and recent projects continued to deliver strong gains. Dr Todd Dennis and his team's world-leading discoveries on the secrets of how pigeons determine their position using the intensity of the Earth's magnetic field resulted in the leading report and cover image in the *Proceedings of the Royal Society of London* and substantial coverage in one of the world's leading scientific journals. Other projects, such as work by Professor Russell Bishop in helping lift Māori school achievement, continued to be adopted or delivered gains in health, education and the environment. In the Fine Arts, we supported a research project that resulted in an exhibition at the Venice Biennale. As an outstanding Māori – and New Zealand exhibit – it received high popular and critical praise and invitations to tour in both hemispheres (see page 15).

A strong theme of looking outwards was also reflected in research projects begun with the CoRE being further developed by other organisations. The Foundation for Research, Science and Technology is funding an important project led by Professor Linda Smith on improving Māori participation in the sciences. Along with this, the Health Research Council is supporting projects on the Māori experience of fertility, and health and social disparities, following work supported by Ngā Pae o te Māramatanga. Dr Karina Walters of the Choctaw Nation of Oklahoma and an Associate Professor at the University of Washington returned to New Zealand to teach and research indigenous health at the University of Auckland having first come to this country for our 2006 international conference. We are very pleased that our International Research Advisory Panel (IRAP) again endorsed the high level of research achievement at Ngā Pae o te Māramatanga. IRAP also noted, “indigenous researchers overseas see Ngā Pae o te Māramatanga as a Centre that achieves what they aspire to and are greatly concerned that it should succeed.”


Our Capability Building Programme saw the establishment of its seventh Te Kupenga o MAI site at Te Whare Wānanga o Awanuiārangi. We are now involved in programmes that assist over 300 graduate students. Cumulatively, these projects have contributed to over 500 new Māori PhDs either enrolled or completed over the last five years. The MAI programme at Te Whare Wānanga o Awanuiārangi contributed to an increase in the institute's Performance-Based Research Fund (PBRF) rating (see page 13). During the year we awarded 18 summer internships; and were involved in supporting postgraduate students in projects from the Bluff (studying healthy housing) to 90 Mile Beach (studying sustainable tourism). We were also pleased to see participation in MAI from Māori and indigenous students around the world, including a student at Stanford University in California, and a post-doctoral fellow returning to New Zealand from the University of Cambridge.

A highlight of the Knowledge Exchange Programme was the launch of the translation of the final volume of Sir Apirana Ngata's *Ngā Mōteatea: The Songs, Volume IV*. In 2007, Ngā Pae o te Māramatanga helped publish 11 books, one monograph, two conference proceedings and supported presentations at 14 academic conferences.

For 2008, we look forward to a new research round. As has happened with our *Whareuku* project, where original research has been developed into new electronic teaching resources in te reo, we will keep accelerating progress from the research stage to the new user. This is particularly important for te reo teachers who already have limited and often dated resources to draw on. Our journal, *AlterNative*, is set to move from one to two issues per year, our online journal, *MAI Review*, is moving from two to four issues per year.

Any organisation that has chosen the name "Horizons of Insight" risks pursuing a goal that always seems distant. Certainly as we grow so we aim to achieve more. But in 2007 it was clear that we had reached an important stage in our growth. It has been a big year, and one that has left the organisation in very good heart.

Dr Tracey McIntosh



Joint Directors

Professor Michael Walker




Welcoming Dr Tracey McIntosh as Tumuaki, Joint Director



In 2007 we were delighted to welcome Dr Tracey McIntosh (Tūhoe) as our new Joint Director. Bringing outstanding research experience from several countries, Tracey is a Senior Lecturer and researcher in sociology at the University of Auckland, where she has also been Deputy Pro Vice-Chancellor (EO) since 2005.

Tracey has been a Fulbright Visiting Lecturer at Georgetown University in Washington D.C, a researcher in France and Burundi and has lectured at the University of the South Pacific in Fiji. She has been a member of our Research Committee for five years, and is committed to building on the gains Ngā Pae o te Māramatanga has made.

Haere rā Professor Linda Tuhiwai Smith



It was with a mixture of sadness and gratitude for an extraordinary contribution that we farewelled one of our founding Joint Directors, Professor Linda Tuhiwai Smith (Ngāti Awa, Ngāti Porou), who has taken up a new post as Pro Vice-Chancellor (Māori) at the University of Waikato.

Ngā Pae o te Māramatanga would not be what it is today without Linda. She helped create momentum for a centre such as this before it was formed, and she was crucial to our birth and success to date.

A leader in Māori education, Linda has an outstanding international reputation as a researcher and teacher and we are delighted that she is continuing in an advisory role with the CoRE.



RESEARCH PROGRAMME

Strong Results in Science, Fine Arts, Health, Social Policy and the Environment

The Research Programme is at the heart of the CoRE's vision for achieving research excellence and social transformation. In 2007 it was pleasing to see projects completed from an ever wider range of disciplines, with some drawing significant international and peer group recognition. These results were particularly welcome in a year when we did not initiate a research round pending the outcome of the competitive TEC funding process. Succeeding in this round was an immensely important result.

The research project *Āniwaniwa* by Dr Brett Graham (Ngāti Korokī Kahukura) and Rachael Rākena (Ngā Puhī, Kāi Tahu) in the Fine Arts was widely exhibited and went on to earn high praise at the Venice Biennale. In the sciences, ground breaking discoveries by Dr Todd Dennis, Professor Michael Walker (Whakatōhea) and Matt Rayner in animal navigation resulted in significant media interest in New Zealand and a substantial report in *Science*, which also profiled the work of Ngā Pae o te Māramatanga in creating a unique centre for Māori research. This latter work highlighted how research projects lead to wider outcomes. Having used GPS technology to research pigeon navigation, Todd has adapted it for tracking possums to meet the needs of best-practice environmental management and a regional industry in the Urewera.

Other highlights during the year included:

- Completion of a scoping project on societal privilege and structured advantage as a way of explaining health and social disparities by Belinda Borell (Ngāti Ranginui, Ngāi Te Rangī, Whakatōhea) from the Whāriki Research Group. This has been taken up and funded for further research by the Health Research Council.
- Completion of a study into Māori views on assisted human reproduction by Dr Marewa Glover (Ngā Puhī) at the University of Auckland, which has been widely reviewed in Government and health sector presentations and led to a planned resource book for people experiencing infertility.
- Research by Kerensa Johnston (Ngā Ruāhine, Te Ātiawa), who is at the University of Auckland Law School, on letting Māori women 'speak for themselves' on relationships with the state, environment and others in their communities and a consideration of how legal processes have been used by them.
- Completion of research on cultural, educational, and health perspectives on the reporting of concussion by high school rugby players by Professor S. John Sullivan of the University of Otago.
- A widely exhibited project by Moana Nēpia (Ngāti Porou), *Future moves in Māori dance*, exhibited on film, video and photography and in a choreographic workshop on new dance work and performance with professional dancers.

- Completion of scoping projects on Māori migration overseas by Manuhuia Barcham (Ngāti Kahungunu, Te Arawa, Ngāti Tūwharetoa); and on researching a methodology for defining iwi boundaries by Drs Cheryl Smith (Ngāti Apa) and Paul Reynolds (Ngāti Tūwharetoa, Ngā Puhī) from Te Atawhai O Te Ao: Independent Māori Institute for Environment and Health.
- A study by Dr Philip Lyver (Ngāti Toarangatira/Ngāi Tahu), of Manaaki Whenua Landcare Research, who is collaborating with kaumātua and representatives from Hauraki to integrate mātauranga (traditional knowledge) with a wider project on the sustainability of oi (grey-faced petrels or northern muttonbird) harvests on the Ruamaahua Islands. This study is an excellent example of research being led by mātauranga Māori.

As noted elsewhere in this report, in 2007 we also reviewed strategies to support advancement for mid-career and senior Māori researchers. This was assisted by external review and appraisal from the International Research Advisory Panel who confirmed strong support for Ngā Pae o te Māramatanga research results and processes. The Panel will continue to contribute to the evaluation of investment in the research programme to seek the most effective outcomes. We welcomed their endorsement, which capped a strong year and confirmed a firm foundation for the future.

Homing in on Animal Navigation How do birds navigate vast oceans, correcting themselves when blown off-course? The inner compass possessed by some animals is an enigma that has absorbed Professor Michael Walker, Joint Director of Ngā Pae o te Māramatanga, for many years. His breakthrough in extracting magnetite – the iron mineral also known as lodestone – from yellowfin tuna established a physical basis for this creature’s ability to detect the Earth’s magnetic field and was published in *Science* magazine in 1984. And, in November 2007, *Science* again gave extensive coverage to Michael’s work, saying his further research looked close to finally clinching magnetite’s crucial role in animal navigation.

The mineral had already been found in birds, but research recently completed by a team led by Dr Todd Dennis, Matt Rayner and Michael, in a collaboration between the School of Biological Sciences at the University of Auckland and Ngā Pae o te Māramatanga, demonstrates pigeons almost certainly use the magnetite in their natural global positioning system.

Geophysicist Joseph Kirschvink of the California Institute of Technology, who is himself one of the pioneers of research into magnetite, told *Science*:

“If there is ever a Nobel Prize for magnetic field perception, Walker’s name will be on it.”

From the Whakatōhea iwi, in the Bay of Plenty, Michael grew up aware of both European science and his Māori grandmother’s use of the maramataka, the lunar system for planting and fishing. A “hybrid mind,” he says, helped foster a fascination for different navigational methods – and an instinct, perhaps, for looking to nature for fresh clues on how things work.

Finding the secrets of animal GPS:
Professor Michael Walker



The Virginian Originally hailing from the state of Virginia, Dr Todd Dennis landed in the Ureweras to see if New Zealand can find a better way to manage possums. Using advanced micro-GPS technology to pinpoint possum movements near the rural community of Ruatāhuna, Todd is also aiming to help a local industry. “Precise tracking using satellite telemetry can help us better understand the movement patterns of introduced pests, and may well suggest the most effective control measures for different situations – all while helping to develop a possum-fur industry that is important to the local economy,” he says.

Dr Todd Dennis: Research Fellow,
Ngā Pae o te Māramatanga



CAPABILITY BUILDING PROGRAMME

Creating Stronger Communities for Securer Outcomes

A central contribution of Ngā Pae o te Māramatanga is supporting the success of more Māori PhD graduates. As no scholar can achieve in isolation, our Capability Programme aims not only to encourage recruitment of new PhDs but also to create a new community of scholars. In 2007, we saw rewarding gains for new initiatives and established programmes.

A highlight was an international *From Pupil to Professor* symposium in March, focusing on how best to navigate the academic pipelines that lead from primary school through to the top of an academic career. Attended by 100 professional researchers and academics, the symposium was convened by Professor Linda Smith with Dr Art Hicks, Programme Director of the Louis Stokes Alliances for Minority Participation of the National Science Foundation in Washington DC, as keynote speaker. This was a special opportunity for discussion and one key conclusion was the need for a more deliberate strategy for supporting current Māori researchers and teachers in taking up leadership positions. We were grateful for the support of Starpath, the project for Tertiary Participation and Success, based at the University of Auckland, in hosting this symposium.

Entering their careers, over 300 students (up from 250 last year) participated in the MAI Te Kupenga programme, which provides a national and international network for face-to-face and internet-based contact among PhD students. In 2007, we were also very pleased to welcome New Zealand's newest PhD granting institution, Te Whare Wānanga o Awanuiārangi, as the seventh MAI site (see overleaf). The online journal, *MAI Review*, published 40 original articles and 24 abstracts and showed strong growth in visitor numbers, to average over 1200 per day. Our Doctoral Writing Retreat at the Waikato University College at Hopuhopu was again fully subscribed with 30 students, while the annual MAI Doctoral Conference in October, hosted by MAI ki Waikato at Kāwhia Marae, attracted 80 participants with 20 papers presented.

Other highlights during 2007 included:

- The formation of new co-funding relationships with other CoREs, CRIs and other research agencies to extend research and learning opportunities for students.
- Support to four Post-Doctoral Fellows, completing research in Māori archaeology and tribal history, suicide prevention, paleoecology (reconstructing environments by studying plant fossils) and the theory and practice of self-determination. During the year, this group published ten articles with a further three in press.
- Good progress towards the National Database for Māori Scholars project (*Te Pukenga Tukutuku*). Supported by the Ministry of Education, the Tertiary Education Commission, Te Kāhui Amokura, various TEIs, iwi and student groups, this project is expected to be completed by early 2009.

Doctoral Scholarships were awarded to 16 students, including continued joint funding of one with the Institute of Environmental Science & Research (ESR). One of our previous doctoral participants, Dr Sarah-Jane Paine, studying sleep patterns, is now being supported by a grant from the Health Research Council. Four Doctoral Bridging grants were awarded, and our Grants and Fellowships scheme awarded 23 Pre-doctoral Research Internships, of which over half achieved publication in *MAI Review* or other peer-reviewed journals.

As befits our name, the Capability Programme takes a strategic view. For example, a research project we initiated led by Associate Professor Elizabeth McKinley and Dr Barbara Grant, *Teaching and learning in the supervision of Māori Doctoral Students*, aims at obvious wider benefits beyond its own findings, and pleasingly in 2007 received external funding. The curriculum embedded in the MAI network, along with our training, management and knowledge communication programmes, reflects both the requirements of successful delivery and a strategy for creating coalitions that increase investment in the intellectual capital of Māori. We aim to build a strong base for Māori scholarly achievement and continue strong progress into 2008.



CASE STUDY

Everyone was Blown Away It never pays to underestimate the power of determination. When Patricia (Trish) Johnston (Ngaiterangi, Ngāti Pikiao) arrived to take up the position as Professor of Postgraduate Studies and Research at Te Whare Wānanga o Awanuiārangi she asked about basic research at the Wānanga and was told by one staff member it was something they didn't do.

Five years on, and following two research and two infrastructure grants from Ngā Pae o te Māramatanga, which were used to 'saturate' staff with an intensive research programme, she can now claim remarkable success in helping change that perception. Last year Awanuiārangi participated in the Performance-Based Research Funding round from the Tertiary Education Commission, and in their very first application were twelfth overall in the country out of 31 tertiary institutions. "Everyone was blown away," says Trish. "We couldn't have even participated without the financial help of Ngā Pae o te Māramatanga."



Awanuiārangi also became the newest MAI site in 2007. As well as the new PBRF funding, the Wānanga has also won research contracts from the Ministry of Education, the Tertiary Education Commission, the Marsden Fund, and is involved in collaborative research projects with several other tertiary institutions. Now focusing primarily on developing further staff research capability and the graduate programmes at Awanuiārangi, Trish has, in five years, helped create a research culture that other institutions can take two decades to achieve. "People talk to us now," she says.

Building research success:
Professor Patricia Johnston

MAI at Cambridge While completing his PhD in Political Sociology at Cambridge University, Dr Chris Tooley (Ngāti Kahungunu) was also an active participant in the MAI programme. "It was



a big help in connecting back with home, talking with other Māori graduates and being kept informed of the indigenous discussions around the world," says Chris. Now editing *Tino Rangatiratanga: Modern Perspectives on a Māori Nation*, with contributions from 32 authors, Chris hopes the book will help take new dialogue about Māori self-determination beyond the marae into the broader arena.

Dr Chris Tooley: MAI graduate and Post-Doctoral Fellow,
Ngā Pae o te Māramatanga

KNOWLEDGE EXCHANGE PROGRAMME

Growth and New Momentum

The Knowledge Exchange Programme is a crucial part of our mission and, in delivering on this in 2007, we were delighted by almost exponential growth in the reach of our websites. We also saw very strong growth in international interest in our journal *AlterNative*, and high numbers of people participating in key events that attracted national media attention.

Pleasingly, we were also involved in seeing knowledge exchanged across the generations, with perhaps the highlight of 2007 being the publication of Emeritus Professor Hirini Moko Mead's translation of Sir Apirana Ngata's *Ngā Mōteatea: The Songs, Volume IV*. This work completed a longstanding project of translating Ngata's full collection of traditional oral learnings, gathered from people and wānanga that had preserved them (see page 3). Linking generations, we also celebrated modern pioneering Māori scholars at our inaugural Te Puāwaitanga Research Excellence Awards evening in March at Auckland's Langham Hotel, where we presented Tohu o te Māramatanga awards to four distinguished Māori scholars. Over 200 attended this event, which also screened on national television, to recognise the contribution these scholars have made to the work others are able to build on today (see page 3).

We saw extraordinary growth in our websites, with over six million hits for the year on the new main Ngā Pae o te Māramatanga website. These hits of course do not represent individual users (as one visitor can generate many hits), but 80% came from visitors who remained on the site for longer than 30 seconds, indicating they arrived through deliberate searches for us.

Reflecting strong interest, our journal, *AlterNative*, which is the world's first international multi-disciplinary academic journal of indigenous studies, was taken up by an international electronic journals service. We understand *AlterNative* is one of only a very few New Zealand publications currently taken up by these services. Another initiative was the launching of the Whareuku website for Māori-medium schools, developed by Rautaki Ltd, a team led by Jenny Lee, which engages students in science experiments and learning. We also re-launched our newsletter *Te Kairangahau* as an e-pānui to enable our international and national audiences to access current information about us more easily.

In more traditional publishing, in 2007 we launched Emeritus Professor Ranginui Walker's book *Ōpōtiki-Mai-Tawhiti, Capital of Whakatōhea*, a tribal history of Professor Walker's own iwi, Whakatōhea of Ōpōtiki, that particularly looks at the events of the nineteenth century and the tribe's struggle for social justice; *Sexuality & the stories of indigenous people*, edited by Jessica Hutchings and Clive Aspin; Dominic O'Sullivan's *Beyond Biculturalism, The Politics of an Indigenous Minority*; and Jenny Bol Jun Lee's *Jade Taniwha: Māori-Chinese Identity and Schooling in Aotearoa*, which gives a picture of living with a Māori and Chinese identity in New Zealand society. Three of these books were launched by Members of Parliament: Nanaia Mahuta, Georgina Beyer and Te Ururoa Flavell.

During the year, we published, in our Tihei Oreore monograph series, the proceedings of two major conferences: *Indigenous Knowledges Conference: Reconciling Academic Priorities with Indigenous Realities*, and *Mātauranga Taketake: Traditional Knowledge Conference*. Dr Joanna Kidman's monograph *Engaging with Māori Communities: An Exploration of Some Tensions in the Mediation of Social Sciences Research* was also published in the Tihei Oreore series. We expanded our work in capturing research on film to convey the work of the CoRE and in 2007 this included filming progress on environmental, science, educational and Fine Arts projects for posting on our website or for distribution on DVDs.

The year was a time of consolidation and growth. We established strong channels to reach a very wide range of national and international scholars and communities. This growth is taking on a momentum of its own. We look forward to building on the opportunities this offers in 2008.

CASE STUDY

Bellissimo! For Māori artists, as any other, recognition overseas can be vital. While sculptor Dr Brett Graham (Ngāti Korokī Kahukura) and audio-visual artist Rachael Rākena (Kāi Tahu, Ngā Puhī) had already built a strong following at home, their success at the prestigious Venice Biennale in 2007 was confirmation of Māori-inspired art's international impact – and fulfilled a dream of exhibiting at a major world venue.

Their collaborative installation, *Āniwaniwa*, (named for rapids on the Waikato) depicts the town of Horahora, flooded in 1947 to make way for a new dam at Lake Karapiro. At Venice over 21,000 visitors lay on mattresses in a 700-year-old exhibition hall to view overhead sculptures housing projected video images and listen to sound components in an eerily powerful testament to a culture now under water.

Invited to exhibit by leading international curator, Robert Storr, who is Dean of the Yale School of Art, the duo had developed the work with Ngā Pae o te Māramatanga support, but had to raise funding for the exhibit themselves. The result was worth it. “Bellissimo”, wrote an Italian visitor. “Very cool”, said an American. “J’aime beaucoup le concept!” added a French visitor. “Ka mau te wehi” wrote one visitor from Lower Hutt: providing a welcome “awesome!” from back home.



Wowing them in Venice: Dr Brett Graham and Rachael Rākena

PUBLICATIONS (*funded, #related)

Ngā Pae o te Māramatanga Publications

- * ASPIN, C.A., (Editor), *AlterNative An International Journal of Indigenous Scholarship*, Issue Three, 2007. Auckland, Ngā Pae o te Māramatanga, 2007.
- * ASPIN, C.A., (Editor), *AlterNative An International Journal of Indigenous Scholarship. Special Supplement 2007 – Developing Excellence: New Directions in Indigenous Research*. Auckland, Ngā Pae o te Māramatanga, 2007 (in press).
- * NGĀ PAE O TE MĀRAMATANGA, *MAI Review Online Journal*, Issue 1, 2007. www.review.mai.ac.nz
- * NGĀ PAE O TE MĀRAMATANGA, *MAI Review Online Journal*, Issue 2, 2007. www.review.mai.ac.nz
- * NGĀ PAE O TE MĀRAMATANGA, *MAI Review Online Journal*, Issue 3, 2007. www.review.mai.ac.nz
- * TE RITO, J.S. (Series Editor), KIDMAN, J. (Author), *Tihei Oreore, Monograph Series, Engaging with Māori Communities*. Auckland, Ngā Pae o te Māramatanga, 2007.

Books – authored research

- * ASPIN, C. & HUTCHINGS, J., *Sexuality and the Stories of Indigenous People*. Auckland, Huia Publishers, 2007.
- # BARGH, M., *Resistance: An Indigenous Response to Neoliberalism*. Wellington, Huia Publishers, 2007.
- * JOHNSTON, K., *He Iti, He Taonga: Reflections by Taranaki Women*. Auckland, Egan-Reid, 2008 (in press).
- # LEE, J., *Jade Taniwha: Māori-Chinese Identity and Schooling in Aotearoa*. Auckland, Rautaki Ltd., 2007.
- * MEAD, A. & RATUVA, S., *Pacific Genes and Life Patents: Pacific Indigenous Experiences & Analysis of the Commodification & Ownership of Life*. Call of the Earth Llamado De La Tierra, United Nations University of Advanced Studies, 2007.
- * NGATA, A.T., *Ngā Mōteatea: The Songs, Volume IV*, Translated by H. Moko Mead. Auckland, Auckland University Press, 2007.
- * O'SULLIVAN, D., *Beyond Biculturalism: The Politics of an Indigenous Minority*. Auckland, Huia Publishers, 2007.
- * WALKER, R., *Ōpōtiki mai Tawhiti, Capital of Te Whakatōhea*. Auckland, Penguin, 2007.

Conference Proceedings – Published by Ngā Pae o te Māramatanga

- * KIDMAN, J., TE RITO, J.S. & PENETITO, W., (Editors), *Proceedings of the Indigenous Knowledges Conference: Reconciling Academic Priorities with Indigenous Realities*. Auckland, Ngā Pae o te Māramatanga, 2007.
- * TE RITO, J.S., (Editor), *Proceedings of the Mātauranga Taketake Conference: Indigenous Indicators of Well-being – Perspectives, Practices, Solutions*. Auckland, Ngā Pae o te Māramatanga, 2007.

Book Chapters

- # CORMACK, D., PURDIE, G. & ROBSON, B., Cancer. In Robson, B. & Harris, R. (Editors), *Hauora: Māori standards of health IV*. Wellington: Te Rōpū Rangahau Hauora a Eru Pōmare, 2007.

- # CRENGLE, S.M., *Respiratory Disease*. In Robson, B. & Harris, R. (Editors), *Hauora: Māori Standards of Health IV: A study of the years 2000-2005 (1st Edition)*. Wellington, Te Rōpū Rangahau Hauora a Eru Pōmare, pp. 169-179, 2007
- # CRENGLE, S.M., *Primary Health Care and Māori findings from the National Primary Medical Care Survey*. In Robson, B. & Harris, R. (Editors), *Hauora: Māori Standards of Health IV: A study of the years 2000-2005 (1st Edition)*. Wellington, Te Rōpū Rangahau Hauora a Eru Pōmare, pp. 225 - 228, 2007.
- # GLOVER, M., *Eroticizing Equality, Coming to Power*. In Aspin, C. & Hutchings, J. (Editors), *Sexuality and the stories of indigenous peoples*. Wellington, Huia Publishers, pp. 55-69, 2007.
- * HOHEPA, M. & MCNAUGHTON, S., *Doing it 'proper': the case of Māori literacy*. In Makin, L., Jones Diaz, C. & McLachlan, C. (Editors), *Literacies in Early Childhood: Changing views, challenging practice (2nd Edition)*. Australia, Elsevier, pp. 97-214, 2007.
- * KIDMAN, J., *Clustered Supervision of Māori Doctoral Students*. In Denholm, C. & Evans, T. (Editors), *Supervising Doctorates Downunder: Keys to Successful Doctoral Study in Australia and New Zealand*. Melbourne, ACER Press, 2007.
- * REID, P. & ROBSON, B., *Understanding Health Inequities.*, In Robson, B. & Harris R. (Editors), *Hauora: Māori standards of health IV*. Wellington, Te Rōpū Rangahau Hauora a Eru Pōmare, 2007.
- * REYNOLDS, P., *'I'm takataapui! I'm takataapui tane!*' In Hutchings, J. & Aspin, C. (Editors), *Sexuality & the Stories of Indigenous People*. Wellington, Huia Publishers, 2007.
- * REYNOLDS, P., *The sanctity and respect for whakapapa: The case of Ngati Wairere & AgResearch*. In Mead, A. & Ratuva, S. (Editors), *Pacific Genes & Life Patents: Pacific Indigenous experiences & analysis of the commodification & ownership of life*. Wellington, Call of the Earth Llamado de la Tierra and The United Nations University Institute of Advanced Studies, 2007.
- * ROBSON, B. & PURDIE, G., *Mortality*. In Robson, B. & Harris, R. (Editors), *Hauora: Māori standards of health IV*. Wellington, Te Rōpū Rangahau Hauora a Eru Pōmare, 2007.
- * ROBSON, B., ROBSON, C., HARRIS, R. & PURDIE, G., *Hospitalisations*. In Robson, B. & Harris, R. (Editors), *Hauora: Māori standards of health IV*. Wellington, Te Rōpū Rangahau Hauora a Eru Pōmare, 2007.

Journal Articles – refereed articles in scholarly journals

- # COUPE, N., GOODYEAR-SMITH, F., ARROLL, B., ELLEY, R., SULLIVAN, S. & MCGILL, A., *Case-finding of lifestyle and mental health problems in primary care: validation of the 'CHAT' tool*. British Journal of General Practice, Manuscript No: BJGP/2007/0239R1, 2007.
- * DENNIS, T.E., RAYNER, M. & WALKER, M.M., *Evidence for geomagnetic orientation in homing pigeons*. Proceedings of the Royal Society, London B. 274(1614), pp. 1153-1158, 2007.
- # PREBBLE, M. & DOWE, J.L., *Quaternary plant extinctions: a case study of palm (Arecaceae) lineages from oceanic islands*. Quaternary International, 167-168: 330, 2007.
- # FANSLAW, J., ROBINSON, E., CRENGLE, S. & PERESE, L., *Prevalence of child sexual abuse reported by a cross-sectional sample of New Zealand women*. Child Abuse & Neglect, 31(9), pp. 935-945, 2007.
- * GIFFORD, H. & BOULTON, A., *Conducting excellent research with indigenous communities: Balancing commitment to community and career*. AlterNative, Special Supplement: Developing Excellence: New Directions in Indigenous Research, pp. 24-45, 2007.

- * GLOVER, M.P., MCCREE, A. & DYALL, L., *Assisted Human Reproduction: Issues for Takatāpui (New Zealand Indigenous Non-Heterosexuals)*. Journal of GLBT Family Studies, p. 27, 2007.
- # GRANT, C., WALL, C., BRUNT, D., CREngle, S. & SCRAGG, R., *Population prevalence and risk factors for iron deficiency in Auckland, New Zealand*. Journal of Paediatrics and Child Health, 43, pp. 532-538, 2007.
- # HOSKING, J., RASANATHAN, K., MOW, F., JACKSON, C., MARTIN, D., O'HALLAHAN, J., OSTER, P., YPMA, E., REID, S., AABERGE, I., CREngle, S., STEWARD, J. & LENNON, D., *Immunogenicity, reactogenicity, and safety of a P1.7b,4 strain-specific serogroup B meningococcal vaccine given to preteens*. Clinical & Vaccine Immunology:CVI, 14 (11), pp. 1393-1399, 2007.
- * JOHNSTON K., *Everything in Context: Indigenous Women, International Human Rights Law and Discrimination*. Indigenous Law Bulletin, 7(17), 2007.
- * JOHNSTON K., *Māori Women Confront Discrimination: Using International Human Rights Law to Challenge Discriminatory Practices*. Indigenous Law Journal, 4, 19, 2005.
- * JOHNSTON K., *The Treaty of Waitangi/Te Tiriti o Waitangi: A Discussion of Legal Developments*. New Zealand Law Review, 603, 2005.
- * JOSEPH, R., *Whānau Mentoring, Māori Youth and Crime: Possible Ways Forward*. Journal of the Children's Issues Centre, 11(1), pp. 36-41, 2007.
- * JOSEPH, R., *Contemporary Māori Governance: New Era or New Error?* New Zealand University Law Review, 22(4), pp. 682-709, 2007.
- * KĒPA, M., *Cultures, Unity and Professional Development (CUPD)*. Journal of Australian Indigenous Issues, 10 (2), pp. 65-72, 2007; David Unaipon College of Indigenous Education and Research: University of South Australia, Special Edition, 2007.
- * KĒPA, M. & KĒPA, C. (accepted for publication), *Contextualising Elderly Care of Māori in the Health Sector in Aotearoa-New Zealand*. AlterNative.
- * KĒPA, M. (accepted for publication), *Cultural Fragments: Concerning Māori Research Development*. Indigenous Peoples' Journal of Law, Culture and Resistance (IPJLCR), Los Angeles.
- * KĒPA, M. (accepted for publication), *Discussant Paper for Dr. Adreanne Ormond, Voices of Vision*, In Tobach, E. & Ormond, A. (Editors), South Pacific Journal of Psychology, Special Edition.
- * KĒPA, M. & MANU`ATU, L. (accepted for publication), *Invitation. Pedagogical Decolonization: Impacts of the European/Pākehā society on the education of Tongan people in Aotearoa-New Zealand*. American Behavioral Scientist Journal, SAGE, U.S.A.
- * MCKINLEY, E., GRANT, B., MIDDLETON, S., IRWIN, K. & WILLIAMS, L. R. T., *Teaching and learning in the supervision of Māori Doctoral Students: Project outline*. MAI Review, 2, 2007. Online at [<http://www.review.mai.ac.nz>].
- # MENZIES, R., MCINTYRE, P., REID, R., O'BRIEN, K., SANTOSHAM, M., WATT, J., ANGELES, G., BROWN, A., DUNBAR, M., LEACH, A., CREngle, S., LENNON, D., MASON, H., GRIM, C., NOLAN, L., SMITH, P., DUMARESQ, G., RICHARDSON, R., MOBERLEY, S., STIRLING, J., GOODA, M. & GREEN M., *Vaccine preventable diseases in indigenous populations International perspectives*. Satellite Symposium of the 5th International Symposium on Pneumococci and Pneumococcal Diseases, April 2007, Alice Springs, Australia. Vaccine, 25(42), pp. 7281-7284, 16 October 2007.

- # MORGAN, T.K.K.B., *Waiora and Cultural Identity: Water Quality Assessment using the Mauri Model*. *AlterNative*, 3, pp. 44–69, 2007.
- # MORGAN, T.K.K.B., *Into the Wind Testimonial*. *American Indian Science and Engineering Society Journal: Winds of Change*, 22(3), Summer, 2007.
- * O’SULLIVAN, D., *Indigeneity and reconceptualising Māori education policy*. In *MAI Review*, 1, 2007. Online at [<http://www.review.mai.ac.nz>].
- # PREBBLE, M. & DOWE, J.L., *Quaternary plant extinctions: a case study of palm (Arecaceae) lineages from oceanic islands*. *Quaternary International*, 167-168: 330, 2007.
- # PRIEST, P., SADLER, L., PETERS, J., CRENGLE, S., BETHWAITE, P., MEDLEY, G. & JACKSON R., *Pathways to diagnosis of cervical cancer: screening history, delay in follow up, and smear reading*. *BJOG: An International Journal of Obstetrics & Gynaecology*, 114(4), April, pp. 398-407, 2007.
- # PORCH, N., PREBBLE, M. & HABERLE, S., *Invasion palaeoecology: using the fossil record to reconstruct the history and impact of human-moderated biological invasions*. 17th INQUA Congress, Cairns, Australia. *Quaternary International*, 167-168: 327-328, 2007.
- * ROBSON, B., PURDIE, G., CRAM, F. & SIMMONDS, S., *Age Standardisation – An Indigenous Standard? Emerging Themes in Epidemiology*, 4(3), 2007.
- * TE RITO, J.S., *Whakapapa: A framework for understanding identity*. *MAI Review*, 2, 2007, Article 2. Online at [<http://www.review.mai.ac.nz>].
- * TE RITO, J.S., *Whakapapa and whenua: An insider’s view*. *MAI Review*, 3, 2007, Article 1. Online at [<http://www.review.mai.ac.nz>].
- # TOOLEY, C., *Indigenous Self-Determination in Quebec: An interview with Chief Picard*. *AlterNative*, 3, pp. 224-236, 2007.
- * WILLIAMS, L. R. T., *Whakapapa of Research: Frameworks for both subject fields and individual development*. *MAI Review*, 3, 2007 (in press). Online at [<http://www.review.mai.ac.nz>].
- * WILLIAMS, L.R.T., *A transformative model and programme for Indigenous advancement through higher education, research and capability building*. *International Journal of Diversity in Organisations, Communities and Nations*, 6(6), 2007. Online at [<http://ijd.cgpublisher.com/product/pub.29/prod.417>].
- # WONG, S., LENNON, D., JACKSON, C., STEWART, J., REID, S., CRENGLE., S., TILMAN, S., AABERGE, I., O’HALLAHAN, J., OSTER, P., MULHOLLAND, K. & MARTIN, D., *New Zealand epidemic strain meningococcal B outer membrane vesicle vaccine in children aged 16-24 months. Clinical Trial, Phase II. Journal Article. Randomized Controlled Trial. Research Support*, *Paediatric Infectious Disease Journal*, 26(4), pp. 345-350, 2007.

Conference Papers

- * ĀTARIA, J., *The Napier Estuary: Stormwater impacts on a traditional Māori food gathering resource*. Canadian Aboriginal Science and Technology Society (CASTS) Conference, Coast Plaza Hotel and Conference Centre, Calgary, Alberta, Canada, 3–5 October 2007.

- * BORELL, B., *When there's everything on our side and nothing in our way: Racial, Ethnic and Gender Privilege in Aotearoa/ New Zealand, the real and the imagined*. The 19th IUHPE World Conference on Health Promotion and Health Education, Vancouver, Canada, 10–15 June 2007.
- * BREWIN, M., *Succession and Support for mid career and senior indigenous researchers in the Academy*. AERA American Education Research Association Annual Conference, Special Interest Group: Indigenous Peoples of the Pacific, Chicago, 2007.
- * CRAM, F., *Evaluation of Amokura - an indigenous family violence prevention strategy and Managing for Māori Outcomes*. American Evaluation Association Conference Evaluation 2007: Evaluation and Learning, Baltimore, United States of America, 7–10 November 2007.
- * COUPE, N., *Whakawhanaungatanga: a jigsaw of collaboration for Māori suicide prevention research and Whakawhanaungatanga; Self harm and suicide prevention in DHBs*. SPINZ Conference, 21–22 November 2007.
- * DIXON, N., *Past and futures collaboration for food resources of New Zealand's North Island waters*. Pasts and Futures of Water Conference, University of Tampere, Finland, 13–17 June 2007.
- * GARDINER, D., *Globalisation and Māori Knowledge*. AERA American Education Research Association Annual Conference, Special Interest Group: Indigenous Peoples of the Pacific, Chicago, 2007.
- * HARRIS, A., *Biography as Balancing Act: life according to Joe and the 'rules' of historical method*. Indigenous Lives 2007: A Conference on Indigenous Biography and Indigenous Autobiography, Humanities Research Centre, Australian National University, Canberra, 9–12 July 2007.
- * JOSEPH, R., *The Government of Themselves: Indigenous Peoples' Internal Self-Determination, Effective Self-Government and Authentic Representation: Waikato-Tainui, Ngāi Tahu and Nisga'a*. International Council on Canadian Studies (ICCS) International Summer Seminars, University of Ottawa and Carleton University, Ottawa, Canada, 13–17 August 2007.
- * KAHOTEA, D., *Kawhia & Aotea Moana – mapping Māori landscape through colonisation*. National Māori Doctoral Student Conference, Kāwhia Marae, Kāwhia, 25–27 October 2007.
- * KAHOTEA, D., *Te Rangihīroa and the Burial Cave Te Ana Tetēā*. Association Social Anthropologists Aotearoa/NZ Annual Conference, University of Waikato, 2007.
- * KAHOTEA, D., *Cultivation of Loyalty, Friendly Chiefs and Loyalty Discourse*. New Zealand History Association Annual Conference, 23 November 2007.
- * KAHOTEA, D., *The Legacy of British and American Archaeology and Māori Heritage*. AAA Annual Meeting, Washington DC, 29 November 2007.
- * MANUEL, R., *Māori Participation in Secondary School Science*. American Indian Science and Engineering Society (AISES) Fundraiser, Seattle, Washington, USA, 13–20 July 2007.
- * MCCKINLEY, E., GRANT, B., MIDDLETON, B., IRWIN, K. & WILLIAMS, L. R.T., *Issues regarding the supervision of Māori doctoral students*. Association of Research in Education (NZARE) Conference, University of Canterbury, Christchurch, New Zealand, 2–7 December 2007.

- * MORGAN, T.K., *Traditional Approaches to Forest Management and the Mauri Model: A Decision Making Framework for Communication Across the Cultural Divide*. Sharing Indigenous Wisdom Int. Conference & Int. Forum on Applied Sustainable Development, Green Bay Wisconsin and Sherbrooke, Quebec, 11–15 June 2007 and 18–20 June 2007.
- * POHE, E., *Developing an online Māori language learning community using Moodle*. GloCALL Globalization and Localization in Computer Assisted Language Learning, Vietnam, 2–7 November 2007.
- * PREBBLE, M. & DOWE, J., *Rat invasions, seed predation and palynological records of human impact on Pacific floras*. Ecology, Evolution and Conservation Conference, University of Hawai'i, Mānoa, Hawai'i, 27–31 March 2007.
- * PREBBLE, M., *Quaternary plant extinctions: a case study of palm (Arecaceae) lineages from oceanic islands*. XVII INQUA Conference, Cairns, Australia, July 2007.
- # PREBBLE, M., PORCH, N., & HABERLE, S., *Invasion palaeoecology: using the fossil record to reconstruct the history and impact of human-moderated biological invasions*. XVII INQUA Conference, Cairns, Australia, July 2007.
- RANGIWĀHIA, S., *Knowledge management in a New Zealand Centre of Research Excellence*. AERA American Education Research Association Annual Conference, Special Interest Group: Indigenous Peoples of the Pacific, Chicago, 2007.
- * ROBUST, T., *Kei hea ngā tāne?/Where are the MEn? The creation of 'space' for MEn to tell their stories about their contribution to the concepts of responsibility, respect, reciprocity and contribution in the education of their children*. 2007 World Forum on Early Care and Education, Kuala Lumpur, Malaysia, 14–19 May 2007.
- * STEPHENS, C., *Indigenous Pedagogies and Practices: a Māori teacher tells her story*. American Educational Research Annual Meeting, Chicago, Illinois, USA, 9–13 April 2007.
- * STEVENS, M.J., *The Whale that Never Slept, Knowledge and Identity: transformations in southern New Zealand*. Tribes and Nations: Persistence and Adaptation of Indigenous Identities, Annual Meeting of the American Society for Ethnohistory, Osage Nation, Tulsa, Oklahoma, USA, 7–10 November 2007.
- * TE RITO, J.S., *From Puketapu to Fernhill and Back*. IUCN Conference on Sacred Sites and Species (3S), Cambridge University, United Kingdom, 24–26 September 2007.
- * TE RITO, J.S., Invited panel member to Spiritual Circle. IUCN Conference on Sacred Sites and Species (3S), Cambridge University, United Kingdom, 24–26 September 2007.
- * TUNKS, M., *Ko te Amorangi ki Mua Ko te Hāpai ō ki Muri*, Strong Leaders Require Continuous Support, Māori Assets for the Promotion of Health and Development. The 19th World Conference on Health Promotion and Health Education Vancouver, Canada, 10–15 June 2007.
- * WILLIAMS, M., *Writing Māori migration stories: some of the challenges from within*. Indigenous Lives 2007: A Conference on Indigenous Biography and Indigenous Autobiography, Australian National University, Canberra, Australia, 9–12 July 2007.

Videotapes, Films, DVD's (that are substantial works of educational or scholarly value)

- * McCLUTCHIE, J. (Editor), TE RITO, J. (Director), *Our Organisation and Some of our Researchers & Students, Research Awards AV Presentation*. Auckland, Ngā Pae o te Māramatanga, 2007. (Part of the AV presentation at the Inaugural Research Excellence Awards event.)

- * McCLUTCHIE, J. (Editor), TE RITO, J. (Director), *Te Puāwaitanga, Tohu o te Māramatanga Research Excellence Awards*. Langham Hotel, Auckland, 23 March, 2007. Auckland, Ngā Pae o te Māramatanga, 2007. (Created for the sponsors of the event.)
- * McCLUTCHIE, J. (Editor), TE RITO, J. (Director), *Various PhD students on the MAI programme*. Filmed at the PhD students' doctoral conference at Ōrākei Marae in 2006. Auckland, Ngā Pae o te Māramatanga, 2007. (Created for the Knowledge Exchange Programme's presentation to IRAPo7.)
- * McCLUTCHIE, J. (Editor), TE RITO, J. (Director), *Ngā Pae o te Māramatanga International Research Advisory Panel (IRAP) Meeting, 9-10th November 2006, Auckland*. Set of three DVDs based on the filming of the meeting. Auckland, Ngā Pae o te Māramatanga, 2007. (Made available to the international panel members who were unable to attend.)
- * McCLUTCHIE, J. (Editor), TE RITO, J. (Director), *Mātauranga Taketake: Traditional Knowledge Conference 2006, Indigenous Indicators of Well-being: Perspectives Practices, Solutions, Keynote Speakers*. Auckland, Ngā Pae o te Māramatanga, 2007. (Included with the Proceedings of the Conference.)
- * McCLUTCHIE, J. (Editor), TE RITO, J. (Director), *Hopuhopu Writing Retreats, Tainui Endowed College*. Auckland, Ngā Pae o te Māramatanga, 2007. (Created for promotional purposes.)
- * McCLUTCHIE, J. (Editor), TE RITO, J. (Director), *Āniwaniwa*. Auckland, Ngā Pae o te Māramatanga, 2007. (Created for the Knowledge Exchange Programme's presentation to IRAPo7.)

WEB Outputs 2007 (to be posted onto NPOTM website: www.maramatanga.co.nz)

- * McCLUTCHIE, J. (Editor), TE RITO, J. (Director), *Te Puāwaitanga, Tohu o te Māramatanga Research Excellence Awards, Langham Hotel, Auckland, 23 March, 2007*. Auckland, Ngā Pae o te Māramatanga, 2007.
- * McCLUTCHIE, J. (Editor), TE RITO, J. (Director), *Hopuhopu Writing Retreats, Tainui Endowed College*. Auckland, Ngā Pae o te Māramatanga, 2007.
- * McCLUTCHIE, J. (Editor), TE RITO, J. (Director), *Āniwaniwa*. Auckland, Ngā Pae o te Māramatanga, 2007.
- * McCLUTCHIE, J. (Editor), TE RITO, J. (Director), *Ngā Mōteatea: The Songs, Volume IV, A.T. Ngata, translated by Hirini Moko Mead*. Auckland, Ngā Pae o te Māramatanga, 2007.
- * McCLUTCHIE, J. (Editor), TE RITO, J. (Director), *Various PhD students on the MAI programme, filmed at the PhD students' doctoral conference at Ōrākei Marae in 2006*. Auckland, Ngā Pae o te Māramatanga, 2007.
- * McCLUTCHIE, J. (Editor), TE RITO, J. (Director), *Mātauranga Taketake: Traditional Knowledge Conference 2006, Indigenous Indicators of Well-being: Perspectives Practices, Solutions, Keynote Speakers*. Auckland, Ngā Pae o te Māramatanga, 2007.

Websites

- RAUTAKI LTD., *Whareuku*. Auckland, Ngā Pae o te Māramatanga, June 2007. [<http://www.whareuku.co.nz>]

Exhibitions

- * GRAHAM, B., & RĀKENA, R., *Āniwaniwa*. City Gallery, Wellington International Arts Festival.

UFOB

TELECOM PROSPECT EXHIBITION. Heather Galbraith (Curator). City Gallery, Wellington, February 2007.

* ĀNIWANIWA. Alice Hutchison (Curator). Te Manawa Gallery, Palmerston North, September 2006–February 2007.

Other Works (seminars, presentations)

* BREWIN, M., *Ngā Pae o te Māramatanga: Centre of Research Excellence*. Hawai'i panel presentation, Pacific Education Conference PEC, Honolulu, 2007.

* BREWIN, M., Led the discussion on indigenous research collaborations. Launch of the Ho'okulaiwi research centre at the East West Centre, University of Hawai'i, 2007.

* GLOVER, M., *Eroticizing Equality, Coming to Power*. 9th Asia Oceania Congress of Sexology: Sexuality – No East No West, Bangkok, 1–4 November 2006.

* GLOVER, M., MCCREE, A. & DYALL, L., *Poster: Assisted Human Reproduction: Issues for Takataapui (New Zealand Indigenous Non-Heterosexuals)*. 9th Asia Oceania Congress of Sexology: Sexuality – No East No West, Bangkok, 1–4 November 2006.

* GLOVER, M., *Infertility not yet identified as an issue for Māori*. Pathways, Fertility NZ, 1, pp. 3–4, 2007.

* GLOVER, M., Interview: *ACART consultation on the use of gametes and embryos in research*. Radio Wātea 603AM, 22 February 2007.

* GLOVER, M. Invited attendee of hui on assisted human reproductive technology. ACART (Advisory Committee on Assisted Reproductive Technology), March 2007.

* GLOVER, M., *Submission on Use of Gametes and Embryos in Human Reproductive Research: Determining Policy for New Zealand*. ACART (Advisory Committee on Assisted Reproductive Technology), 2006.

* GLOVER, M., Co-facilitator: *The cultural, ethical and spiritual aspects of using Human Embryos for research*. Toi Te Taiao: the Bioethics Council Hui, Ritimana Kohanga Reo, Auckland, 27 November 2006.

GRAHAM, B. & RĀKENA, R., The UFOB event and some individual contributions were covered in New Zealand television and broadsheet newspapers. Dominion Post, Manawatu Standard. NZ Herald, 4 July 2007; 27 September 2007.

GRAHAM, B. & RĀKENA, R. The project leaders were profiled in “Urbis” magazine with a preview of UFOB. Urbis, Issue 32, June, pp. 164–166, 2006.

GRAHAM, B. & RĀKENA, R., UFOB was reviewed in Art New Zealand, Art News, Spring, pp. 82-85, 2007; Mana Magazine; National Business Review, August, p. 47, 2007.

* KEPA, M., Partner, investigator: *Living to advanced age – Feasibility for a cohort study*. School of Population Health, the University of Auckland, 2007–8. Funded by the Health Research Council as part of a programme of research, Maximising Health of Older People.

* MCGREGOR, K., JÜLICH, S. & GLOVER, M., *Health Professionals' Responses to Disclosure of CSA History: Female CSA Survivors' Experience*. 9th Asia Oceania Congress of Sexology: Sexuality – No East No West, Bangkok, 1–4 November 2006.

- # MORGAN, T.K.K.B., *The Mauri Model Holistic Decision Making and Sustainability Assessment Workshop*. Rotorua District Council, NZ, pp. 1–22, 8 March 2007. Mahi Maioro Professionals.
- # MORGAN, T.K.K.B., *The Mauri Model Waiariki Evaluation Exercise: Holistic Decision Making and Sustainability Assessment Workshop*. Rydges Hotel, Rotorua, NZ, pp. 1–22, 9 Poutu Te Rangi 2007. Mahi Maioro Professionals.
- # MORGAN, T. K. K. B., *The Mauri Model Integrated Decision Making Framework*. Half day Seminar for Rotorua District Council councillors and staff, 8 March 2007.
- # MORGAN, T. K. K. B., *Mauri Tū Mauri Ora: Holistic Decision Making and Sustainability Assessment*. Full Day Workshop, Rydges Hotel, Rotorua, 9 Poutu Te Rangi, 2007.
- # MORGAN, T. K. K. B., *Integrated Decision Making and Sustainability Assessment*. Full Day Workshop, College of Menominee First Nation, Kalashka, Wisconsin, USA, 10 September 2007.
- # MORGAN, T. K. K. B., *Ontology, Epistemology, and Morality: A Perspective from Aotearoa Land of the Long White Cloud*. Three Hour Post-graduate Seminar, Faculty of Forestry, Indigenous Peoples and Forest Land Management, FRST 522, University of British Columbia, Vancouver, Canada, 24 September 2007.
- # MORGAN, T. K. K. B., *Indigenous Values and the Western Research Paradigm*. Post-graduate Seminar, Institute for Resources, Environment & Sustainability, Qualitative Methods in Interdisciplinary Contexts, RMES500S, University of British Columbia, 26 September 2007.
- # MORGAN, T. K. K. B., *Cross-Cultural Conflict and Resolution of Power and Knowledge Inequalities: Collaborative Research Practice using the Mauri Model*. SAGE: Supporting Aboriginal Graduate Enhancement Seminar, University of British Columbia, Vancouver, Canada, 29 September, 2007.
- # MORGAN, T. K. K. B., *Sustainability through an Aboriginal Lens: Holistic Decision Making using the Mauri Model*. CEDAR LECTURE, Faculty of Science, Faculty of Land and Food Systems, University of British Columbia, Vancouver, Canada, 18 October 2007.
- # MORGAN, T. K. K. B., *Indigenous Values and Concepts in Engineering Design and Decision Making*. AISES 2007 National Conference Professional Members Dinner Presentation, Phoenix Convention Centre, Arizona, USA, AISES, 2 November 2007. (Not presented due to program error.)
- # O’SULLIVAN, D., *Keeping Māori seats ensures democracy provides fair deal*. The New Zealand Herald, Auckland, 12 February 2007.
- # O’SULLIVAN, D., *Reconciliation: the Political Theological Nexus in Australasian Indigenous Public Policy*. Invited keynote address to the Australasian Catholic Press Association, Auckland, 20 September 2007.
- * O’SULLIVAN, D., *Beyond Biculturalism: The Politics of an Indigenous Minority*. Invited address to the School of Law, University of Waikato, 18 September 2007.
- * O’SULLIVAN, D., *Beyond Biculturalism: The Politics of an Indigenous Minority*. Address to the Hamilton East Rotary Club, University of Waikato, 23 May 2007.
- * O’SULLIVAN, D., *Interview* on Radio New Zealand’s ‘Morning Report’, 22 May 2007.
- * O’SULLIVAN, D., *Interview* with Willie Jackson, Radio Wātea, Auckland, 21 May 2007.

- * O'SULLIVAN, D., *Interview* for Te Kaea, Māori Television News, 20 May 2007.
- * O'SULLIVAN, D., *Beyond Biculturalism: The Politics of an Indigenous Minority*. Address to the School of Education Colloquium, University of Waikato, 27 April 2007.
- * O'SULLIVAN, D., *The Treaty of Waitangi in Contemporary New Zealand Politics*. Address to Secondary School History Teachers' Professional Development Conference, Epsom Girls' Grammar School, Auckland, 20 April 2007.
- * O'SULLIVAN, D., *Interview* with Radio Wātea, for Radio New Zealand's 'Morning Report', 12 February 2007.
- # REYNOLDS, P. & HUTCHINGS, J., *Māori and the 'McScience' of New Technologies; Biotechnology and Nano-technology Research and Development*. Monograph prepared by Te Mata o Te Tau, The Academy for Māori Research and Scholarship, Massey University, Wellington. In *Matariki*, 1(1), 2007.

Professional and Technical Reports

- # ALEXANDRA, X. & O'SULLIVAN, D., *Indigenous participation at all levels of decision-making in elective institutions and administrative or other bodies. Good Practices of Indigenous Political Participation: Māori Participation in New Zealand Elective Bodies*. Contracted Research Report to the International Labour Organisation, Geneva, Switzerland, September 2007.
- # BISHOP, R., BERRYMAN, M., CAVANAGH, T., TEDDY, L. & O'SULLIVAN, D., *The Experiences of Year 4 and 5 Māori Students in Primary School Classrooms*. Contracted Research Report for the Ministry of Education. Wellington. Ministry of Education, June 2007.
- * GLOVER, M., MCCREE, A. & DYALL, L., *Māori attitudes to assisted human reproduction: An exploratory study. Summary report*. Auckland, Social & Community Health, School of Population Health, University of Auckland, p. 36, 2007.
- * KĒPA, M., *Cultural Impact and Assessment Report: Waipu Proposed Upgrading of Wastewater Treatment and Disposal Systems*. Commissioned by the Whangarei District Council, 28 February 2007.
- # KĒPA, M., *Patuharakeke Te Iwi Trust Board (Inc) Environmental Plan for Whangarei District Council*. Whangarei, March, 2007.
- * MORGAN, T.K.K.B., *Te Kaupapa o Te Whare House of Tahu Cultural Sustainability Assessment: A report outlining cultural sustainability recommendations for the final design of the House of Tahu*. Prepared for Ngāi Tahu Property Limited by C. Pauling, Toitu Te Whenua and T.K.K.B. Morgan, Mahi Maioro Professionals, pp. 1–75, 15 January 2007.

Major Original Creative Works

- * GRAHAM, B., & RĀKENA, R., *Āniwaniwa*. 52nd International Art Exhibition La Biennale, Venice, Italy, 10 June–30 September 2007.

FINANCIAL STATEMENTS

Ngā Pae o te Māramatanga

NATIONAL INSTITUTE OF RESEARCH EXCELLENCE FOR MĀORI DEVELOPMENT AND ADVANCEMENT

STATEMENT OF FINANCIAL PERFORMANCE

FOR THE 12 MONTHS ENDED 31 DECEMBER 2007

| | Notes | Actual 2007 12 Months \$ | Actual 2006 12 Months \$ |
|--|--------|-----------------------------------|-----------------------------------|
| Operating income | | | |
| Tertiary Education Commission grant | 3c | 3,598,538 | 3,546,667 |
| Change in year end Research funds held | 1c, 3d | 794,463 | 154,377 |
| Grant applied | | 4,393,001 | 3,701,044 |
| Host/Partner support | | 0 | 0 |
| Non Tertiary Education Commission revenues | 6 | 349,284 | 552,609 |
| Change in year end Research funds held | 4 | (77,038) | (236,990) |
| Funds applied | | 272,246 | 315,619 |
| Total operating income | | 4,665,247 | 4,016,663 |
| Expenditure | | | |
| Research projects: | | | |
| Salary and salary related costs | | 1,310,580 | 1,019,560 |
| Overheads | 7 | 491,249 | (21,110) |
| Other operating costs | | 715,967 | 1,122,155 |
| Subcontractors | 8 | 2,213,129 | 1,866,486 |
| Equipment Depreciation | | 29,797 | 29,571 |
| Other | | | |
| Total operating expenditure | | 4,760,722 | 4,016,663 |
| Total operating income less expenditure (deficit) | | (95,475) | 0 |

The accompanying notes form part of these financial statements.

FINANCIAL STATEMENTS

Ngā Pae o te Māramatanga

NATIONAL INSTITUTE OF RESEARCH EXCELLENCE FOR MĀORI DEVELOPMENT AND ADVANCEMENT

STATEMENT OF FINANCIAL POSITION

AS AT 31 DECEMBER 2007

| | Notes | Actual 2007 12 Months \$ | Actual 2006 12 Months \$ |
|---|-----------|-----------------------------------|-----------------------------------|
| Assets | | | |
| Current Assets | | | |
| Cash balance held by University of Auckland | 10 | 2,562,432 | 3,281,332 |
| Total current assets | | 2,562,432 | 3,281,332 |
| Total Assets | | 2,562,432 | 3,281,332 |
| Current Liabilities | | | |
| Research Funds | 1c, 3d, 4 | 2,327,926 | 3,045,351 |
| Total current liabilities | | 2,327,926 | 3,045,351 |
| Long Term Liabilities | | | |
| Capital Equipment Fund | 3e | 234,506 | 235,981 |
| Total long term liabilities | | 234,506 | 235,981 |
| Total Liabilities | | 2,562,432 | 3,281,332 |

The accompanying notes form part of these financial statements.

Signed on behalf of the Board



Chairman



Director of Ngā Pae o te Māramatanga

FINANCIAL STATEMENTS

Ngā Pae o te Māramatanga

NATIONAL INSTITUTE OF RESEARCH EXCELLENCE FOR MĀORI DEVELOPMENT AND ADVANCEMENT
NOTES TO THE ACCOUNTS

1. Statement of Accounting Policies

(a) Basis of Preparation

Ngā Pae o te Māramatanga, National Institute of Research Excellence for Māori Development and Advancement is a Centre of Research Excellence and is managed as an institute within the University of Auckland and has its own Board of Governance.

The financial statements comprise statements of: financial performance; movements in equity; financial position, and notes including accounting policies.

The financial statements have been prepared in New Zealand currency, on the basis of historical cost, and in accordance with generally accepted accounting practice in New Zealand. The entity is not yet required to adopt New Zealand equivalents to International Financial Reporting Standards.

The financial statements are for the 12 months ended 31 December 2007. The comparative figures are for the 12 months ended 31 December 2006.

The Tertiary Education Commission agreed to re-align the reporting year to end as at 31 December commencing 2005. This now agrees with the financial year end.

(b) Differential Reporting

Under the Framework for Differential Reporting issued by the New Zealand Institute of Chartered Accountants, Ngā Pae o te Māramatanga is classified as “small” and qualifies for differential reporting exemptions. Most available differential reporting exemptions allowed under the Framework have been adopted.

(c) Revenue

Research grant revenue from the Tertiary Education Commission is reduced by the obligation to continue research or ultimately return any unspent funds.

(d) Taxation

Ngā Pae o te Māramatanga income is exempt from income tax. All amounts are shown exclusive of Goods and Services Tax (GST). GST is accounted for outside Ngā Pae o te Māramatanga financial statements by the University of Auckland as host institution.

FINANCIAL STATEMENTS

(e) Changes in Accounting Policy

Uniform accounting policies have been applied on a basis consistent with those of the previous period.

2. Audit

These unaudited financial statements have been extracted from the audited financial statements of the University of Auckland.

3. Tertiary Education Commission Grant

(a) Funding Levels

Ngā Pae o te Māramatanga is primarily funded by the Tertiary Education Commission. Funding is approved until 30 June 2008.

Approved levels are:

| | |
|---|-------------|
| Approved and received for year ending 30 June 2003 | \$3,262,223 |
| Approved and received for year ending 30 June 2004 | \$3,306,667 |
| Approved and received for year ending 30 June 2005 | \$3,546,667 |
| Approved and received for half year ending 31 December 2005 | \$1,773,333 |
| Approved and received for year ending 31 December 2006 | \$3,546,667 |
| Approved for year ending 31 December 2007 | \$3,546,667 |
| Approved for year ending 30 June 2008 | \$1,773,333 |

(b) Extension of Funding

An extension of funding for a further period of six years has been provisionally approved by the Tertiary Education Commission.

Provisional levels are:

| | |
|--------------------------|-------------|
| Year ending 30 June 2009 | \$5,330,960 |
| Year ending 30 June 2010 | \$5,330,960 |
| Year ending 30 June 2011 | \$5,330,960 |
| Year ending 30 June 2012 | \$5,330,960 |
| Year ending 30 June 2013 | \$5,327,976 |
| Year ending 30 June 2014 | \$5,136,994 |

FINANCIAL STATEMENTS

Ngā Pae o te Māramatanga

NATIONAL INSTITUTE OF RESEARCH EXCELLENCE FOR MĀORI DEVELOPMENT AND ADVANCEMENT

NOTES TO THE ACCOUNTS

| | Actual 2007 12 Months \$ | Actual 2006 12 Months \$ |
|---|-------------------------------------|-------------------------------------|
| (c) Tertiary Education Commission - Current Period Grant Grant for the 12 months ending 31 December 2007 Tripartite funds 2006/2007 | 3,546,666 51,872 3,598,538 | 3,546,667 3,546,667 |
| (d) Tertiary Education Commission - Research Funds Held Research funds at beginning of period Change in year end research funds held Research funds at end of period | 2,779,402 (794,463) 1,984,939 | 2,933,779 (154,377) 2,779,402 |
| (e) Tertiary Education Commission - Capital Equipment Fund Funds at beginning of period Change in year end research funds held Research funds at end of period | 235,981 (1,475) 234,506 | 235,981 235,981 |
| 4 Non Tertiary Education Commission Revenues Research Funds Held Research funds at beginning of period Change in year end research funds held Research funds at end of period | 265,949 77,038 342,987 | 28,959 236,990 265,949 |
| 5 Commitments There are outstanding commitments of \$2,113,400 for signed contracts against Research Funds Held for the Research, Capability Building and Knowledge Exchange programmes at balance date. (2006: \$1,838,215) | | |

FINANCIAL STATEMENTS

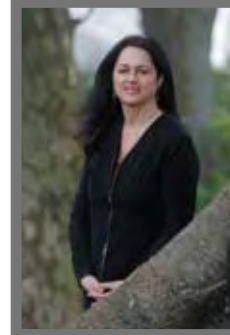
| | | | |
|---|-----------|-----------|--|
| 6 Other Revenue | | | |
| Sum total of all other revenues/ funding other than Tertiary Education Commission funding. | 349,284 | 552,609 | |
| 7 Overheads | | | |
| Tertiary Education Commission Funding | | | |
| Actual overheads for 2007 totalled \$385,797. | | | |
| A complete review of the overheads charging process was undertaken during 2006 resulting in a significant refund to Ngā Pae o te Māramatanga backdated to commencement in July 2002. The refund totals \$425,982 for the period 1 July 2002 to 31 December 2005. Actual overheads for 2006 totalled \$366,879, resulting in net overheads of (\$59,103) | | | |
| Non Tertiary Education Commission Funding | | | |
| Actual overheads for 2007 totalled \$123,889 (2006:\$37,993) | | | |
| Tertiary Education Commission Funding | 385,797 | (59,103) | |
| Non Tertiary Education Commission Funding | 105,452 | 37,993 | |
| Total | 491,249 | (21,110) | |
| 8 Subcontractors | | | |
| Payments are for contracted research, knowledge exchange and capability building projects for all participating entities. | | | |
| 9 Operating Expenditure | | | |
| Ngā Pae o te Māramatanga did not pay any interest, audit fees or write off any bad debts during the period (2006 nil). | | | |
| 10 Cash Balances | | | |
| Cash balances are held on behalf of Ngā Pae o te Māramatanga by University of Auckland - Research Funds | | | |
| - Tertiary Education Commission | 1,984,939 | 2,779,402 | |
| Capital Equipment Fund - Tertiary Education Commission | 234,506 | 235,981 | |
| Research Funds - Non Tertiary Education Commission | 342,987 | 265,949 | |
| | 2,562,432 | 3,281,332 | |



Professor Michael Walker
Tumuaki, Joint Director



Professor Linda Smith
Tumuaki, Joint Director
(2002 - July 2007)



Dr Tracey McIntosh
Tumuaki, Joint Director
(July 2007)



Dr Marilyn Brewin
Pou Wherawhera Hautupua,
Research Programme Leader



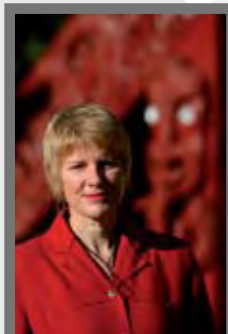
Dr Joseph Te Rito
Pou Whakawhitinga
Mātauranga, Knowledge
Exchange Programme
Leader



**Emeritus Professor Leslie R
Tūmoana Williams**
Pou Whakatairanga
Hiranga, Capability Building
Programme Leader



Dr Clive Aspin
Senior Research Fellow
(2003 - 2008)



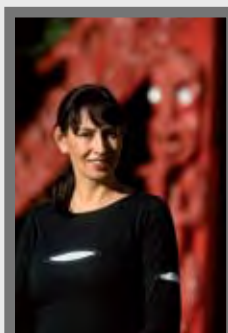
Ms Adrienne Pryor
Business Support
Manager (2005 - 2007)



Mr Simon Rangiwāhia
Programme Officer
(2003 - 2007)



Dr Mere Kēpa
Research Fellow



Ms Jane Rangiwāhia
Programme Coordinator



Mrs Premika Sirisena
Departmental
Administrator



Dr Chris Tooley
Research Fellow



Mr Zaine Mitchell
Programme Coordinator



Ms Donna Gardiner
Programme Officer



Dr Todd Dennis
Research Fellow



Mrs Honorine Franswah
Office Assistant



Ms Josie McClutchie
Production Manager



Mr Te Miha Ua-Cookson
Research Fellow
(2006 - 2007)

CONTACTS

Postal Address

Ngā Pae o te Māramatanga
Waipapa Marae Complex
The University of Auckland
Private Bag 92019
Auckland Mail Centre
Auckland 1142
New Zealand

Physical Address

Ngā Pae o te Māramatanga
Rehutai Building
16 Wynyard Street
The University of Auckland
Auckland
New Zealand

www.maramatanga.co.nz
info@maramatanga.co.nz

T +64 9 373 7599 ext 84220
F +64 9 373 7928



NGĀ PAE O TE MĀRAMATANGA

New Zealand's Māori Centre of Research Excellence