



PŪRONGO Ā-TAU

ANNUAL REPORT 2022

Hangaia he tūāpapa kia puāwai ai Te Ao Māori
Building the foundations for flourishing Māori futures



*Whāia ngā pae o te māramatanga
Ko te pae tawhiti, whāia kia tata
Ko te pae tata, whakamaua kia tina
E puta ai ki te whaiao, ki te ao mārama!*

*Pursue the many horizons of insight,
Bring each one closer,
Master them and emerge enlightened!*

Ngā Pae o te Māramatanga is a Centre of Research
Excellence funded by the Tertiary Education Commission
and hosted by the University of Auckland

MIHI | GREETINGS

*Karanga te pō, karanga te ao
Tākiri mai ngā hiko o te rangi
Whakatau iho ki pae maunga
Ki pae whenua ki pae tāngata*

*Tē whakakauriki te puna maimai aroha ki te hunga kua riro
Tō te ira tangata he tangi pūkare, he tangi apakura
Matewai ana te kamo, tō te hirikapo he hokinga mahara
Waiho mā roimata hei whakamauru noa i te murimuri aroha*

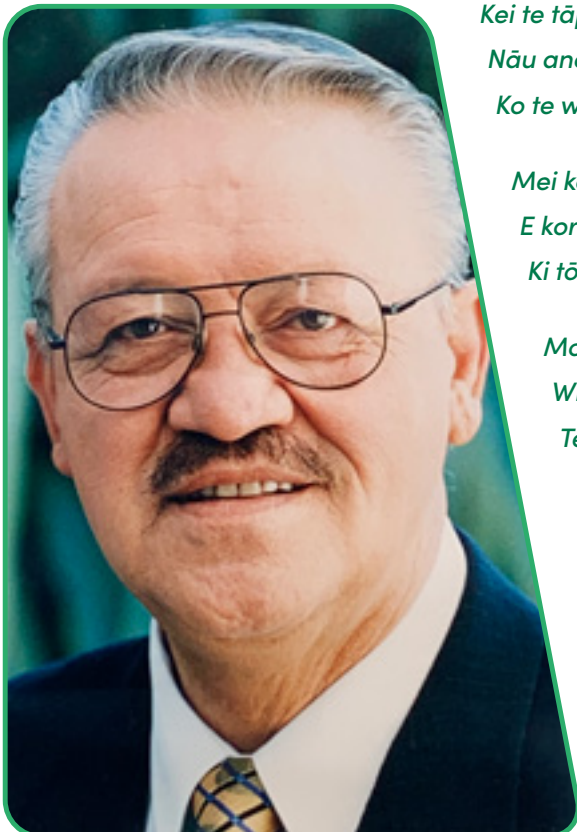
*Tākiri mai te ihirangi a Hine Ruhi, e tīpu te hinātore kia huaina mai
He whakareanga pūtohe anō e tawhai tapuwae o rātou mā, ringa ki te hoe!
Mai rānō i te orokohanganga mai o Ngā Pae o te Māramatanga
He tira puhake rawa i te ihumanea, i te ihuoneone ki te kaupapa*

*Nā konā, inā te kupu whakamiha ki ngā tīpako momoho mō tēnei tau
Whakamānawatia te Poari, ngā Pou Matarua, te Rīnga Tohu me Te Kāhui Ārahi
Huri noa ki ngā kairangahau Māori e ū rawa ki te kaupapa ao noa pō noa
Koia te Pūrongo ā-tau, he kāhui kōrero hei taunaki i ngā kawenga o te tau*



JOSEPH PARATA HOHEPA HAWKE MNZM (1940 – 2022)

NGĀTI WHĀTUA KI ŌRĀKEI



*Kei te tāpui tāmaka nō Ngāti Whātua Ōrākei
Nāu anō te ngākau titikaha hei toka-tū-moana
Ko te whenua taurikura o Takaparawhau te take*

*Mei kore ake tō tirohanga matekite me te tū whakakiriūka
E kore rawa e whanake ngā mangainga tākerekere o Tuperiri
Ki tō rātou ipukarea, ki tō rātou kāinga tupu anō hoki*

*Moe mai e te kanohi kai mātārae i runga i te mōhio
Whatungarongaro te tangata toi tū te whenua
Tēnei a Ngā Pae o te Māramatanga e whakamānawa nei*

RUA TEKAU TAU | 20 YEARS



For two decades Ngā Pae o te Māramatanga has stood as Aotearoa's only Indigenous Centre of Research Excellence. In 2022, we reflected on our beginnings, our contribution and the impact we achieved as a network of highly skilled and motivated researchers and post graduate students deeply committed to realising hopeful and flourishing futures for our communities and generations to come. Our 20th year logo celebrates our journey towards becoming a taonga for our peoples and nation. The logo is a sunburst representing our energy and achievement. It rests upon a background of pounamu to remind us that Ngā Pae o te Māramatanga is a taonga.

CONTENTS

NGĀ KŌRERO MŌ NPM ABOUT US	8
NGĀ POU WHĀINGA OUR MISSION	9
NGĀ MATAKITENGA OUR VISION	9
NGĀ POU KURA OUR VALUES	9
NGĀ PĀTAI OUR QUESTIONS	10
RANGAHAU OUR RESEARCH	10
NGĀ PAE OUR EXCELLENCE PLATFORMS	11
NGĀ RAUTAKI OUR STRATEGIES	11
	
TE WHAKATUTUKI I NGĀ WHĀINGA REALISING OUR GOALS	12
NGĀ TĪPAKO HIGHLIGHTS 2022	13
MAI I TE TIAMANA O TE POARI FROM THE BOARD CHAIR	14
MAI I NGĀ POU MATARUA FROM THE CO-DIRECTORS	16
	
NGĀ TĀNGATA OUR PEOPLE	18
RUĀNUKU OUR WISDOM HOLDERS	20
TE POARI O NPM THE NPM BOARD	21
TE TIRA TAKIMANO ELECTORAL COLLEGE OF PARTNERS	23
POARI-Ā-AO ARO RANGAHAU INTERNATIONAL RESEARCH ADVISORY BOARD	26
KOMITI RANGAHAU RESEARCH COMMITTEE	26
NGĀ KAITOHUTOHU OUR DIRECTORATE	27
KĀHUI ĀRAHI OUR RESEARCH LEADERSHIP TEAM	27
	
NGĀ RANGAHAU OUR RESEARCH	28
PAE AHUREI LIVING UNIQUELY	29
NGĀ TĪPAKO HIGHLIGHTS	29
RANGAHAU RESEARCH	30
WHAKAAWEAWE INFLUENCING TRANSFORMATION	31
MAHINGA HOU NEW WORK	32
ĒTAHI PUTANGA SELECTED OUTPUTS	33
PAE ORA LIVING WELL	34
NGĀ TĪPAKO HIGHLIGHTS	34
RANGAHAU RESEARCH	35

WHAKAAWEAWE INFLUENCING TRANSFORMATION	36
MAHINGA HOU NEW WORK	38
ĒTAHI PUTANGA SELECTED OUTPUTS	42
PAE TAWHITI LIVING LIGHTLY	43
NGĀ TĪPAKO HIGHLIGHTS	43
RANGAHAU RESEARCH	44
WHAKAAWEAWE INFLUENCING TRANSFORMATION	46
MAHINGA HOU NEW WORK	47
ĒTAHI PUTANGA SELECTED OUTPUTS	49
PAE AUAHA LIVING SMARTLY	50
NGĀ TĪPAKO HIGHLIGHTS	50
RANGAHAU RESEARCH	51
WHAKAAWEAWE INFLUENCING TRANSFORMATION	51
MAHINGA HOU NEW WORK	53
ĒTAHI PUTANGA SELECTED OUTPUTS	54
<hr/>	
KOUNGA OUR STRATEGIES	56
TE KUPENGA O MAI	57
KANAPU	60
BIENNIAL INTERNATIONAL INDIGENOUS RESEARCH CONFERENCE 2022	62
KNOWLEDGE SHARING	63
ALTERNATIVE: AN INTERNATIONAL JOURNAL OF INDIGENOUS PEOPLE	64
MAI JOURNAL: A NEW ZEALAND JOURNAL OF INDIGENOUS SCHOLARSHIP	66
<hr/>	
WHAKANUIA TE ANGITŪ CELEBRATING SUCCESS	68
NEW ZEALAND HONOURS	69
ROYAL SOCIETY TE APĀRANGI AWARDS	69
NEW PROFESSORS	70
SCHOLARSHIP AND AWARD RECIPIENTS	71
<hr/>	
TE TAHA PŪTEA FINANCIALS	74
FINANCIAL STATEMENT 2022	74
CENTRE SUMMARY 2022	75

NGĀ KŌRERO MŌ NPM

ABOUT US

NGĀ POU WHĀINGA | OUR MISSION

Our mission is to grow and enhance excellent Māori researchers and Māori-led research that together build the foundations for flourishing Māori futures. Te reo, tikanga and mātauranga, and our vast network of Māori researchers, communities and partners in transformation define and distinguish Ngā Pae o te Māramatanga as New Zealand's Māori Centre of Research Excellence.

NGĀ MATAKITENGA | OUR VISION

- Cherish and celebrate flourishing Māori futures
- Grow responsible economic and environmental relationships
- Influence positive change for healthy and meaningful Māori lives
- Nurture wise and ethical Māori technological transformations
- Inspire Māori and Indigenous research and excellence
- Connect with partners for impact and transformative change

NGĀ POU KURA | OUR VALUES

Rangatiratanga

We lead with integrity and commitment to our people.

Kaitiakitanga

We care responsibly for each other, the planet and future generations.

Manaakitanga

We respect all life forces.

Whanaungatanga

We build genuine and meaningful relationships.

NGĀ PĀTAI | OUR QUESTIONS

Four Pātai or critical-systems-orientated questions generate transformative interventions and policy advice for stakeholders and next users. All of our research contributes mātauranga-informed theories, models and evidenced solutions in response to our Pātai. Our Pātai serve to integrate and energise our programme and Pae serve to synthesise our research for next-stage impact and outcomes.

PĀTAI TE AO MĀORI

How can te reo, tikanga and mātauranga continue to inform our futures?

PĀTAI WHĀNAU

How can whānau wellbeing be realised in everyday life?

PĀTAI MAURI

How can mātauranga inform and drive sustainable and just societal practices?

PĀTAI PUĀWAI

How can research be used transformatively to accelerate the achievement of flourishing Māori futures?

RANGAHAU | OUR RESEARCH

NPM research solves real world challenges facing Māori. We do so in Māori-determined and Māori-inspired ways engendering sustainable relationships that grow the mana and mauri of the world we inhabit. The excellence and expertise of the NPM researcher network is organised by four Te Ao Māori knowledge and excellence clusters or Pae. Pae are where our researchers rise with Te Ao Māori knowledge, tools and expertise to build a secure and prosperous future for Māori and Aotearoa New Zealand. Pae are purposefully expansive and inclusive, supporting transdisciplinary teams and approaches. Our 2021–2028 programme of work will look to the far future to assure flourishing Māori futures for generations to come. With Māori intended as the primary beneficiaries of our research, our programme will reinforce the firmly established foundations of mātauranga Māori through sound research attuned to the lived experience of Māori.

NGĀ PAE | OUR EXCELLENCE PLATFORMS

PAE AHUREI – LIVING UNIQUELY

Research to cherish and celebrate distinctively Māori futures.

PAE ORA – LIVING WELL

Research to influence positive change for healthy and meaningful lives.

PAE TAWHITI – LIVING LIGHTLY

Research that pursues responsible social, economic and environmental relationships.

PAE AUAHA – LIVING SMARTLY

Research that creates wise and ethical technological transformations.

NGĀ RAUTAKI | OUR STRATEGIES

RAUTAKI KOUNGA – PROFESSIONAL EXCELLENCE

Act to inspire Māori Indigenous research and excellence

RAUTAKI WHAKAAWEAWE – IMPACT

Connect with partners for impact and transformative change



TE WHAKATUTUKI I NGĀ WHĀINGA

REALISING OUR GOALS

NGĀ TĪPAKO HIGHLIGHTS

Ruānuku and previous Board Chair
Tā Tipene O'Regan named

**NEW ZEALANDER OF
THE YEAR** and Member of the
Order of New Zealand.

We launched the

KANAPU PROGRAMME

to grow Māori talent and leadership in
the research, science and innovation
(RSI) sector – a partnership with the
Ministry of Business, Innovation and
Employment (MBIE).

NPM continued to deliver excellent results
as **COVID-19** pandemic restrictions eased
progressively through the year.

Active sector engagement and
participation in the preparation
of **TE PŪTAHITANGA**,
a collective response to MBIE's **Te
Ara Paerangi** consultation process

The **10th Biennial International
Indigenous Research Conference**
was successfully delivered online with
new engagement formats and

662 registrants.

Celebrated with

12 NEW
professors

12 Māori
PhD candidates published
new doctoral research.

Established four **FIRST** research programmes,

10 new Matakiteanga research projects,
11 new NPM Futures PhD scholars, and
20 Raumati Internships.

The MAI 2022 Doctoral Conference
was the largest in **10 YEARS** with close to

100 PhD STUDENT
ATTENDEES.

Appointed **two new** Board members
and **TWO CO-CHAIRS**
for **Te Tira Takimano**,
the NPM Electoral College.

MAI I TE TIAMANA O TE POARI

FROM THE BOARD CHAIR

*Maiea a Rangi e tū ake nei
Maiea a Papa e takoto nei
Maiea te whai ao ki te ao mārama
Kei ngā uri heke iho
Nō ngā kauwheke kahurangi
Tēnā rā tātou katoa*

*Tē mimiti te reo whakamiha ki a koutou
Nō te whare punenga o NPM
E tāwhaitia te akaaka rangahau
I te ao i te pō – e rere nei te tai o mihi*

*Neke atu i te rua ngahuru tau a NPM
Kua hīkina kua kawea kua eke Tangaroa
I ngā kaupapa rangahau o te wā
I te mutunga iho, nōku anō hoki te whiwhi
Hei tiamana o te tira o rongo nei*



Welcome to our annual report, which celebrates over 20 years of Ngā Pae o te Māramatanga. For the past 20 years, Ngā Pae o te Māramatanga has carved out a unique and significant place in our research landscape, building, developing and supporting Māori and Indigenous scholars, here in Aotearoa and around the world.

Underpinned by our tikanga, collective values, and shared aspirations for our whānau, hapū and iwi communities, our work continues to develop and grow Māori scholarship and leaders, across all disciplines.

Together, we have built a durable and important ecosystem of people, systems and support structures, which in turn has contributed to the growth of Māori researchers and their significant contribution to all parts of our communities – both in the traditional university environment and, increasingly, in community-based research entities, located within hapū, iwi or other Māori and Indigenous collectives.

As we face new and old challenges, our work has never been more relevant, or urgent. We are collective and holistic in our thinking and in our approach to the challenges and the issues of today and the future.

As the first Māori-focused centre of research excellence in Aotearoa, we are uniquely placed and focused on ensuring our research has impact in the communities we serve, and that it seeks to answer the most pressing issues of our time. This requires a continued focus not only on research excellence, and the tools and networks Māori researchers need to support their work, but also on collectively challenging institutional racism at all levels. Such racism undermines the value of our people, work and values, and challenges the constitutional framework in which we currently operate.

The work of Māori researchers, scholars and leaders is transformative in this respect, and as Professor Linda Tuhiwai Smith has said, “Indigenous scholarship there is a strong theme of relational work; of challenging and demanding that Western academic traditions and paradigms be decolonised; of the revitalisation of Indigenous knowledge, commitment to the struggles of Indigenous peoples and attending to our inter-generational responsibilities.”

As part of this work, the vision of Ngā Pae o te Māramatanga, underpinned by all of you and the work you do, endures.

When Ngā Pae o te Māramatanga was first established in 2002, the vision of Professor Linda Tuhiwai Smith and Michael Walker, was that it would create a community of Māori and Indigenous scholars who would change the world and, as Linda explained, “alter the relationship of research to Māori society from exploitation to self-determination. They would give academic disciplines the wake-up call they need to get out of the way, or work in partnership. They would create excellence by working at the intersection of science and mātauranga Māori”.

Over 20 years later, we still have a great deal of work to do to achieve this vision and to fulfil our potential. But the hard work of building our infrastructure, systems and critical relationships amongst our communities, with one another, and across academic and other institutions, has been done. All of this work positions us well as we move into the next phase of our collective growth and development, underpinned by our shared values and commitment to achieve the best for Te Ao Māori.

Ngā mihi,

Kerensa Johnston
NPM Board Chair



Kerensa Johnston
NPM Board Chair

MAI I NGĀ POU MATARUA

FROM THE CO-DIRECTORS

This report showcases NPM's research and activities for 2022. After the pandemic-related challenges of the past two years, 2022 ushered in a gradual but welcome change. Our secretariat returned to our NPM HQ at Waipapa Taumata Rau to sit together again, while our national network progressively resumed in-person activities in and with communities. International travel restarted but with a more intentional and cautious mindset.

2022 also marked a number of historically important moments for NPM and Te Ao Māori more broadly. At NPM we celebrated our 20th anniversary as one of Aotearoa's longest running CoREs. We paused and reflected on our key achievements in a series of retrospectives for our [monthly e-pānui](#). 2022 also marked a major milestone for te reo Māori, being [50 years](#) since Ngā Tamatoa and tens of thousands of people signed and presented the Māori language petition to Parliament, setting in motion the revitalisation of te reo Māori. We are proud of the contributions made by many of our NPM whānau over the decades including inaugural Co-Directors Linda Tuhiwai Smith and Michael Walker, Ruānuku Ngahuia Te Awekōtuku, and Kairangahau Josie Keelan and Morehu McDonald who were among the founding members of Ngā Tamatoa.

NPM was also able to host two major events in November—our 10th International Indigenous Research Conference and the MAI doctoral conference. As with the previous conference, IIRC2022 was fully virtual and had our biggest turnout to date with more than 600 participants. With open access keynotes, concurrent paper

sessions and collabs, IIRC2022 provided multiple forums for Indigenous researchers to come together and share, strategise, listen and learn. The same month Pou Kounga Dr Hinekura Smith and her team at Te Whare Wānanga o Wairaka (Unitec) hosted a fully subscribed MAI doctoral conference – the first one in 18 months.

Our research and capability-building initiatives also took flight with the contracting of four FIRST research programmes, a suite of new Matakitega research projects, a new cohort of 11 NPM Futures PhD scholars, 20 Raumati summer interns and the MBIE-funded Kanapu programme. With this platform established, we are looking forward to the task of synthesising our research endeavours for greater impact and outcomes.

It has been a year of looking back and looking forward, with gratitude and an ongoing commitment to building flourishing Māori futures.

Nā māua,

Professor Linda Waimarie Nikora FRSNZ

Professor Tahu Kukutai FRSNZ





**Professor Linda
Waimarie Nikora
FRSNZ**



**Professor Tahu Kukutai
FRSNZ**



NGĀ TĀNGATA

OUR PEOPLE

RUĀNUKU TĀ TIPENE O'REGAN

KT, ONZ, CRSNZ

TE POU WHAKARAE O AOTEAROA | NEW ZEALANDER OF THE YEAR 2022



“Tā Tipene continues to be an inspiration for Ngā Pae o te Māramatanga. His standards of excellence and achievement are an inspiration to the nation.”

— Pou Matarua Professor Linda Waimarie Nikora

RUĀNUKU

OUR WISDOM HOLDERS



**Kaitiaki Tā Pita
R Sharples**
KNZM, CBE
Ngāti Kahungunu



**Emeritus Professor
Tā Mason Harold Durie**
ONZ, KNZM, FRANZCP, FNZAH, FRSNZ
*Rangitāne, Ngāti Kauwhata,
Ngāti Raukawa*



**Emeritus Professor
Ngahuia Te Awekotuku**
MNZM FAWMM
Te Arawa, Tūhoe, Waikato



**Adjunct Professor
Tā Tipene O'Regan**
Kt, ONZ, CRSNZ
Ngāi Tahu

TE POARI O NPM

THE NPM BOARD

Kerensa Johnston (Chair)

Ngāti Tama, Ngāruahine,
Te Ātiawa, Ngāti Whāwhakia
Wakatū Incorporation

**Professor Rawinia Higgins
(to November 2022)**

Tūhoe
Victoria University of Wellington

**Associate Professor
Te Kawehau Hoskins**

Ngāti Hau, Ngāpuhi
University of Auckland

**Associate Professor
Amokura Kāwharu**

Ngāpuhi, Ngāti Whātua
Law Commission

Professor Pare Keiha

Te Aitanga-a-Māhaki, Rongowhakaata
Auckland University of Technology

**Dr Jane Kitson
(to November 2022)**

Ngāi Tahu, Ngāti Mamoe, Waitaha
Kitson Consulting Limited

Professor James Metson

University of Auckland

**Associate Professor
Te Manahau (Scotty) Morrison**

Ngāti Whakaue
TVNZ, Massey University

**Erina Watene
(from November 2022)**

Waikato, Maniapoto, Ngāi Te Rangī
*NZ's Biological Heritage National
Science Challenge*

**Che Wilson
(from November 2022)**

Ngāti Rangī-Whanganui, Tūwharetoa, Mōkai,
Pātea, Ngāti Apa, Ngā Rauru
Intugen Limited



Welcoming our new board members. From left to right back: Vanessa Clark, Erina Watene, Rawinia Higgins, Che Wilson, Marie-Chanel Berghan, Paora Sharples, Honorine Franswah. Front: Pare Keiha, Karensa Johnston (Board Chair), Tahu Kukutai

NEW BOARD MEMBERS



Erina Watene

Waikato, Maniapoto,
Ngāi Te Rangī

*NZ's Biological Heritage
National Science Challenge*

New NPM Board member Erina Watene is an experienced governor and director having also served on Waikato River Authority and Te Wai Māori Trust, the NZ Biological Heritage Science Challenge, iwi and not-for-profit boards. A freshwater scientist with a background in river and lake restoration, taonga species research, resource management and environmental planning, she brings a wealth of experience working at the interface between policy, mātauranga Māori and science.



Che Wilson

Ngāti Rangī-Whanganui,
Tūwharetoa, Mōkai, Pātea, Ngāti Apa,
Ngā Rauru

Intugen Limited

New NPM Board member Che Wilson grew up in the foothills of Mount Ruapehu and has been involved in tribal activities and a recipient of tribal knowledge from a young age. A Managing Director of Intugen Limited, Che focuses principally in the tūpuna wisdom space as a speaker, consciousness coach, resource developer and a podcaster. Che was the Chair and Chief Negotiator for his iwi Ngāti Rangī to settle historic grievances.

TE TIRA TAKIMANO

Electoral College of Partners



Dr Rāwiri Tinirau

Co-Chair

Te Āti Haunui-ā-Pāpārangī,
Ngāti Rangī, Ngāti Tūwharetoa,
Ngāti Kahungunu me Ngāi Tūhoe

Te Atawhai o te Ao

Newly appointed Co-Chair of Te Tira Takimano, the NPM electoral college, Rāwiri has a background in education, research, business management, project management, Māori business and governance. He is currently a director of Te Atawhai o Te Ao (The Independent Māori Institute for Environment and Health), where he provides strategic leadership and management, as well as supporting governance.



Professor David

Tipene-Leach MNZM

Co-Chair

Ngāti Kahungunu

Eastern Institute of Technology

Newly appointed Co-Chair of Te Tira Takimano, David was appointed Professor of Māori and Indigenous Research at EIT in early 2017. He was made a Member of the New Zealand Order of Merit for services to Māori and health in 2018. He has spent his working life promoting Māori health. David continues to advance his research interests at EIT, where he also teaches a postgraduate programme in Māori health.

TE TIRA TAKIMANO PARTNER REPRESENTATIVES

Dr Amohia Boulton

Ngāti Ranginui, Ngāi te Rangī,
me Ngāti Pūkenga, Pirirakau, Ngāti Kahu
*Whakauae for Māori Research Health
and Development*

Liz Brown

Ngāi Tahu, Amokapua Pākākano Tuarua
Tokona Te Raki: Māori Futures Collective

Rowena Dunn

Ngāti Whātua
Ngāti Whātua Ōrākei Whai Maia Ltd

Associate Professor Anaru Eketone

Ngāti Maniapoto, Waikato
University of Otago

Dr Arapata Hakiwai

Ngāti Kahungunu, Rongowhakaata,
Ngāti Porou and Ngāi Tahu
Museum of New Zealand, Te Papa Tongarewa

Associate Professor Meegan Hall

Ngāti Ranginui, Ngāti Tūwharetoa
Victoria University of Wellington

Holden Hohaia

Ngāti Maru, Taranaki Whānui
ki te Upoko o te Ika
Landcare Research Manaaki Whenua

Associate Professor Te Kawehau Hoskins

Ngāti Hau, Ngāpuhi
University of Auckland

Professor Te Kani Kingi

Ngāti Pūkeko, Ngāti Awa, Ngāi Tai
Te Whare Wānanga o Awanuiārangi

Professor Jenny Lee-Morgan

Waikato-Tainui, Ngāti Mahuta, Ngāti Te Ahiwaru
Unitec Institute of Technology

Anaru Luke

Ngāti Rārua, Ngāti Toa Rangatira, Rangitāne ki
Wairau, Te Ātiawa, Ngāti Maniapoto-Kinohaku
Cawthron Institute

Dr Shireen Maged

Te Wānanga o Aotearoa

Associate Professor Marama Muru-Lanning

Waikato Tainui, Ngāti Maniapoto
Waikato-Tainui College for Research and Development

Professor Shaun Ogilvie

Ngāti Whakahemo, Ngāti Awa, Ngāti Pūkeko
University of Canterbury

Vasiti Margaret Palavi

Te Rarawa, Ngāti Kuia
Auckland War Memorial Museum

Professor Kura Paul-Burke

Ngāti Awa, Ngāti Whakahemo
University of Waikato

Dr Dione Payne

Waikato, Ngāti Tūwharetoa
Lincoln University

Distinguished Professor Graham Smith

Ngāti Porou, Ngāi Tahu, Ngāti Apa
and Ngāti Kahungunu
Massey University

Dr Valance Smith

Ngāpuhi, Waikato, Ngāti Haina, Ngāti Pākehā
Auckland University of Technology

Dr Rāwiri Tinirau (Co-Chair)

Te Āti Haunui-a-Pāpārangī, Ngāti Rangī, Ngāti
Tūwharetoa, Ngāti Kahungunu me Ngāi Tūhoe
Te Atawhai o te Ao

**Professor David Tipene-Leach
MNZM (Co-Chair)**

Ngāti Kahungunu
Eastern Institute of Technology



POARI-Ā-AO ARO RANGAHAU

International Research Advisory Board

Professor Megan Davis

University of New South Wales
Sydney, Australia

Professor Charles Menzies

University of British Columbia
Vancouver, Canada

Distinguished Professor Linda Tuhiwai Smith CNZM

(Chair)
New Zealand

Professor Kyle Powys Whyte

University of Michigan
USA

KOMITI RANGAHAU

Research Committee

Dr Nichola (Nikki) Harcourt

Waikato-Maniapoto, Ngāpuhi
Landcare Research Manaaki Whenua

Dr Nathan Kenny

Te Ātiawa, Ngāi Tahu
University of Otago

Dr Nepia Mahuika

Ngāti Porou
University of Waikato

Associate Professor Bridgette Masters-Awatere

Te Rarawa, Ngāi te Rangi, Tūwharetoa ki Kawerau
University of Waikato

Dr Vincent Olsen-Reeder

Ngā Pōtiki ā Tamapahore, Ngāti Pūkenga, Ngāi Te Rangi, Te Arawa
Victoria University of Wellington

Associate Professor Matthew Roskrige

Te Ātiawa, Ngāti Tama
Massey University

Associate Professor Katharina Ruckstuhl

Ngāi Tahu Rangitāne
University of Otago

Professor Melinda Webber (Chair)

Ngāti Whakae; Ngāpuhi; Ngāti Kahu; Ngāti Hau
University of Auckland

INTERNATIONAL INDIGENOUS RESEARCH CONFERENCE ABSTRACT COMMITTEE

Dr Tūmanako Ngāwhika Fa'au

Ngāti Uenukukōpako
University of Auckland

Associate Professor Margaret Forster

Ngāti Kahungunu, Rongomaiwāhine
Massey University

Dr Deborah Heke

Ngāpuhi, Te Arawa
Auckland University of Technology

Dr Te Rita Bernadette Papesch

Waikato-Maniapoto, Ngāti Porou, Ngāti Whakae
Te Wānanga o Aotearoa

Associate Professor Maree Roche

Ngāti Raukawa
University of Waikato

Dr Mohi Rua

Tūhoe, Ngāti Awa, Ngāti Whakae
University of Auckland



STUFF 12 November, 2022
From Aotearoa to Norway,
Indigenous researchers to
collaborate at international
conference.

READ MORE 

NGĀ KAITOHUTOHU

NPM Directorate

Professor Linda Waimarie Nikora FRSNZ, Pou Matarua, Host Co-Director, *University of Auckland*

Professor Tahu Kukutai FRSNZ, Pou Matarua Co-Director, *University of Waikato*

Paora Sharples, Pou Tikanga Māori, *University of Auckland*

Marie-Chanel Berghan, Pouhere Matua, *University of Auckland*

KĀHUI ĀRAHI

NPM Research Leadership team

POU PAE

Professor Jenny Lee-Morgan, Pou Pae Ahurei, *Unitec*

Professor Papaarangi Reid, AFPHM, FNZCPHM, Pou Pae Ora, *University of Auckland*

Dr Ocean Mercier, Pou Pae Tawhiti, *Victoria University of Wellington*

Associate Professor Te Taka Keegan, Pou Pae Auaha, *University of Waikato*

POU PĀTAI

Associate Professor Karyn Paringatai, Pou Pātai Te Ao Māori, *University of Otago*

Dr Mohi Rua, Pou Pātai Whānau, *University of Waikato*

Dr Shaun Awatere, Pou Pātai Mauri, *Manaaki Whenua Landcare Research*

Professor Helen Moewaka Barnes FRSNZ, Pou Pātai Puāwai, *Massey University*

POU RAUTAKI

Associate Professor Meegan Hall, Pou Rautaki Professional Excellence, *Victoria University of Wellington*

Dr Hinekura Smith, Pou Rautaki MAI, *Unitec*

Professor Yvonne Underhill-Sem, Pou Rautaki Pacific, *University of Auckland*

ALTERNATIVE JOURNAL CO-EDITORS

Professor Tracey McIntosh MNZM, *University of Auckland*

Associate Professor Carwyn Jones, *Te Whare Wānanga o Raukawa*

MAI JOURNAL CO-EDITORS

Associate Professor Ocean Mercier, *Victoria University of Wellington* (to April 2022)

Professor Melinda Webber, *University of Auckland* (to April 2022)

Associate Professor Te Kawehau Hoskin, *University of Auckland* (from April 2022)

Dr Vincent Olsen-Reeder, *Victoria University of Wellington* (from April 2022)

RESEARCH FELLOWS

Dr Teorongonui Josie Keelan, *University of Auckland*

KĀHUI RINGATOHU

Honorine Franswah, Pouhere Whakahaere – Executive Centre Coordinator, *University of Auckland*

Dr Kiri Edge, Pouhere Rangahau – Research Manager, *University of Auckland*

Vanessa Clarke, Pouhere Kanapu Executive Director Kanapu Programme, *University of Waikato*

Dr Tim West-Newman, Pouhere Pūnaha – Web and Systems Manager, *University of Auckland*

Cindy McQuade, Pouhere Whakapā – Media Communications, *University of Auckland*

Wiremu Meha, Pouhere Hautaka – Publications and Journal Coordinator, *University of Auckland*

Cheryle Willoughby, Kaihāpai Hautaka – Journal and Events Coordinator, *University of Auckland*

NGĀ RANGAHAU

OUR RESEARCH

NPM research solves real world challenges facing Māori. We do so in Māori-determined and Māori-inspired ways engendering sustainable relationships that grow the mana and mauri of the world we inhabit. The excellence and expertise of the NPM researcher network is organised by four Te Ao Māori knowledge and excellence clusters or Pae – where our researchers rise with Te Ao Māori knowledge, tools and expertise to build a secure and prosperous future for Māori and Aotearoa New Zealand.

PĀE AHUREI

LIVING UNIQUELY

Hāmamatia, waiatatia, whakawahatia te Ahurei Māori

Pae Ahurei enables research that explores Te Ao Māori in conscious and dynamic ways to discover, celebrate and consider the need for invigoration, protection, renewal and future-proofing. Taking control of our knowledge, technologies and life ways to ensure ongoing benefit requires confidence, leadership, insight and honesty. Our researchers contribute directly to language revitalisation and strengthen information, knowledge, assets, wealth, values and culture transferred across generations.

NGĀ TĪPAKO

Highlights

- Professor Rangi Mātāmua led Aotearoa towards celebrating Matariki as a public holiday
- Research and advocacy for valuing Te Ao Māori continued with significant media commentary by our researchers
- Ruānuku Ngahuia Te Awekotuku anchored docuseries *Waharoa: Art of the Pacific* (Three episodes) on NEON
- NPM celebrated our 20th year with Ngā Tamatoa (50yrs), Taura Whiri i Te Reo (35yrs) and Te Matatini (50yrs)
- Three new Matakiteanga research were launched to protect, regenerate and future-proof Te Ao Māori

Research to cherish and
celebrate distinctively
Māori futures



Milky Way rising above Lake Tekapo, New Zealand, with aurora australis or the southern lights, lighting up the sky

RANGAHAU | RESEARCH

NGAATI KOROKI KAHUKURA “E RUA NGAA MARAE, KOTAHI TE IWI”

Ngaati Koroki Kahukura are kaitiaki of lands and waters that span from their ancestral mountain, Maungatautari, to their tupuna awa, Waikato, including areas of national significance such as Cambridge (Te Oko Horoi a Taawhiao) and Karaapiro, the site of the last intra-iwi battle of Taumata Wiiwii in the 1800s. As a community-led project, the research explores Ngaati Koroki Kahukura has fostered wellbeing in their tribal region and in Te Ao Maaori more broadly. Through waananga with kaumaatua and whaanau the research will give voice to the memories of tuupuna while exploring complex issues of hapuu fluidity, iwi identity and relationships, mana whenua, ahi kaa and ahi kaa roa, mana motuhake, self-determination, and, Kiingitanga. This research team will bring to light and keep alive whakapapa, stories of significant sites and names, puurakau, pakiwaitara, history and case studies of land use and living well with the Earth, and will contribute to the revitalisation of reo, tikanga and maatauranga.



Lead — Associate Professor Linda Te Aho (Ngaati Koroki Kahukura, Ngaati Mahuta, Waikato) (UoW) with Rahui Papa (Ngaati Koroki Kahukura, Ngaati Mahuta), Karaitiana Tamatea (Ngaati Koroki Kahukura, Waikato, Te Aitanga a Māhaki) and Hinerangi Kara (Ngaati Koroki Kahukura, Waikato).

Host — University of Waikato

KAI PIRO, ORANGA TANGATA

Māori fermented food and derived health benefits to māori

Kai piro —fermented food—was traditionally a staple of the Māori diet. However, over time the practice of sourcing, producing, and consuming kai piro has waned to the extent that it is no longer a common part of the Māori diet. While some kaumātua still maintain the knowledge and practice of kai piro, action is required to ensure continuity. This research supports kai piro revitalisation, by observing and documenting the practices, lived experiences and narratives of practitioners and knowledge-holders. It includes the procurement of required ingredients and the processing, fermenting, preserving and consumption of kai piro. The hope is that kai piro will once again become a staple component in the Māori diet of future generations

Lead — Associate Professor Te Kahautu Maxwell (Te Whakatōhea, Ngāti Awa, Ngāi Tai, Te Whānau-ā-Apanui, Ngāti Porou, Ngāti Maniapoto, Tūhoe) (UoW), with Daniel Poihipi (Te Whakatōhea, Te Whānau-ā-Apanui, Tūhoe) Te Rūnanga o Te Whānau-ā-Apanui.

Host — University of Waikato

TUTUNGIA TE KĀPURA HEI ORANGA MŌ TE HAPŪ

Light the fires for our collective vitality

How can broadening our understanding of fires as a literal phenomenon enliven our appreciation of ahikā as a tikanga? Kapua O'Connor's study is an extensive study of the tikanga ahikā. Ahikā was a tikanga that worked in conjunction with whakapapa to ascertain who had mana in particular lands or seas. The tikanga of ahikā was part of a rigorous well-established framework. Although different from one region to the next, it seems to have had nationwide application. Ahikā itself denoted that the fires were burning

steadily, referring to the hapū's constant occupation of their lands. Ahiteretere denoted that the fires were flickering, meaning that the hapū's occupation was sporadic or fleeting, but that they held mana in those lands. Ahimātaotao denoted that fires were extinguished, meaning that hapū had not occupied land for a significant, multigenerational period, meaning they no longer had mana in former lands. Kapua's study of types of fires and their purposes will enable more nuanced theory and refined understandings of the tikanga of ahikā.

PhD Researcher: Kapua O'Connor (Ngāti Kurī, Pohūtiare) University of Auckland
Supervisor – Tracey McIntosh (UoA)

WHAKAAWEAWE | INFLUENCING TRANSFORMATION

NEON WAHAROA: ART OF THE PACIFIC (TV DOCUMENTARY, THREE EPISODES)

This docuseries takes viewers on a journey through Māori and Pasifika art. Esteemed art historian and NPM Ruānuku Ngahuia Te Awekotuku travels from Dunedin to Russell in search of stunning works and the incredible people who made them.

[WATCH HERE](#) 

THE SPINOFF, 28 APRIL 2022. ABOUT ALL THAT "MĀORI NONSENSE" ON THE RADIO.

NPM Board member and chair of Te Taura Whiri i te Reo Māori (the Māori Language Commission) comments publicly on the value of te reo Māori to Aotearoa and the world.

[READ MORE](#) 

WANANGA PAETUKUTUKU, 6 JULY 2022. NGĀ HUA A TE MATATINI: THE BENEFITS OF TE MATATINI WEBINAR.

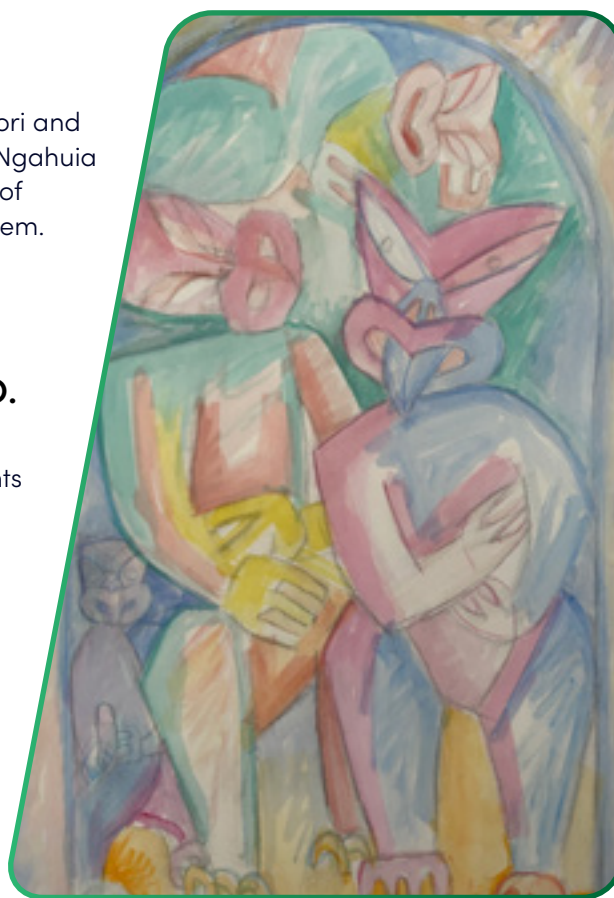
To mark the release of research reports, Ngā Hua a Te Matatini: The benefits of Te Matatini, Te Matatini and NPM hosted an open webinar with the researchers.

[WATCH HERE](#) 

THE POWER OF KAPA HAKA CAN CHANGE THE FUTURE OF AOTEAROA

Concerned that kapa haka was not being given due acknowledgement, Te Matatini approached NPM in 2019 to conduct research to evidence the value of kapa haka, not just to Te Ao Māori but to Aotearoa. Collectively released in July 2022, [Ngā Hua a Te Matatini: The benefits of kapa haka to Aotearoa](#) shows the vast value of kapa haka to Aotearoa, from economic contributions to health and educational outcomes, and as a vessel for the expression and regeneration of Māori culture.

[READ MORE](#) 



Featured in Waharoa by Kura Te Waru Rewiri

NGĀ PAE O TE MĀRAMATANGA CLAIMS MATARIKI

What does research into ocean voyaging, growing food, fishing and seasonal changes all have in common? Answer: the Maramataka, Māori lunar calendar. For over two decades, NPM researchers have contributed to the canon of knowledge needed to support the rise of Matariki (Pleiades) as the world's first Indigenous public holiday. The inaugural Matariki public holiday was celebrated in Aotearoa on 24 June 2022.

"Matariki will be a distinctly New Zealand holiday; a time for reflection and celebration, and our first public holiday that recognises Te Ao Māori". (Jacinda Ardern). [MORE](#)



NPM acknowledges the efforts of all our researchers and communities towards this achievement.

[READ MORE](#)

Playing in te reo Māori – Puni Reo Poitarawhiti

Boosting support through research for innovative initiatives like Puni Reo Poitarawhiti, the first Māori-language-only netball tournament in Auckland, is integral to supporting the normalisation of te reo. The report *Te Riponga: Puni Reo Poitarawhiti* (Lee-Morgan & Martin, 2021) [MORE](#) investigated the ripple effect of the Māori language tournament and its impact on organisers, participants and communities.

[READ MORE](#)

MAHINGA HOU | NEW WORK

MATAKITENGA PROJECTS

E rua ngaa marae, kotahi te iwi – Ngaati Koroki Kahukura

Lead – Associate Professor Linda Te Aho (UoW Host) with Rahui Papa, Karaitiana Tamatea and Hinerangi Kara (UoW) [MORE](#)

The Hikairo series – Culturally responsive teaching in Aotearoa me Te Waipounamu

Lead – Dr Matiu Ratima (UC Host) with Sonja Macfarlane (MU), Jennifer Smith (UC) and Georgina Stewart (AUT) (UC) [MORE](#)

Kai Piro, Oranga Tangata: Māori fermented food and derived health benefits to māori

Lead – Associate Professor Te Kahautu Maxwell (UoW Host) with Daniel Poihipi (Te Rūnanga o Te Whānau-ā-Apanui) [MORE](#)

PHD SCHOLARS

Tutungia te kāpura hei oranga mō te hapū: Light the fires for our collective vitality

PhD Researcher: Kapua O'Connor (Ngāti Kuri, Pohūtia) (UoA)
Supervisor – Tracey McIntosh (UoA) [MORE](#)

RAUMATI INTERNSHIPS

Building an Indigenous Science curriculum in tertiary education

Emma Jones (Ngāti Porou) (UoO)
Supervisor – Anne-Marie Jackson (UoO) [MORE](#)

Hangaia ana te whare o Indigenous Science

Tane Whitehead (Te Ātiawa, Taranaki) (UoO)

Supervisor – Anne-Marie Jackson (UoO) [MORE](#)

Maramataka Māori embedding indigenous knowledge(s) in education

Georgia Palmer (Ngāi Te Rangi, Ngāti Awa, Ngāti Pīkiao) (UoW)

Supervisors – Hurinui Clarke & Kari Moana Te Rongopatahi (Te Rarawa, Ngāti Whatua and Tainui) (UC) [MORE](#)

Kākāpō: Regenerating knowledge of an endangered Taonga species (co-funded with New Zealand's Biological Heritage National Science Challenge)

Moana Murray (Ngāpuhi, Ngāti Wai, Ngāti Kahu ki Whangaroa) (UoW)

Supervisor – Linda Waimarie Nikora (UoA) [MORE](#)

Tangi as a transferable mourning and grief model (co-funded with University of Auckland)

Eddie Balme (Ngāti Mutunga, Ngāti Tama) (UoA)

Supervisor – Linda Waimarie Nikora (UoA) [MORE](#)

ĒTAHI PUTANGA | SELECTED OUTPUTS

Ngā Pae o te Māramatanga. (2022, October 13). *Taking te reo Māori from kura to the netball court.* The Spinoff.

[READ MORE](#) 

Hall, M., Meade, R., Te Huia, A., Royal, K., Nikora, L. W., & Tinirau, R. (2022, 6 July). *Ngā Hua a Te Matatini: The benefits of Te Matatini* [Webinar]. Te Matatini Society Incorporated and Ngā Pae o te Māramatanga.

[READ MORE](#) 

Nikora, L.W., Meade, R., Hall, M., Bowden, L., Selby-Rickit, T.H.R., Mikaere, T.M., Te Huia, A., & Fox, R. (2022). *The value of kapa haka – An overview report.*

[READ MORE](#) 

Kewene-Doig, L. M. (2022). *He Kohinga Kōrero: A selected group of Māori musicians and performers' experiences of the 1960s through the Māori showband movement* [Doctoral Thesis, University of Otago]. OUR Archive.

[READ MORE](#) 

Waipara, Z. R. S. (2022). *Te Mana-A-Māui / The Magic Of Māui: Transforming and shapeshifting pūrākau Māori* [Doctoral thesis, Auckland University of Technology]. AUT Tuwhera OpenAccess.

[READ MORE](#) 



Poutini and Pounamu – Celebrating 20 years

“Poutini the taniwha swims up and down the west coast of the South Island, protecting both the people and the mauri of Pounamu. Many of the oral histories of Pounamu revolve around Poutini coming across a woman bathing in the northern seas of the Bay Of Plenty. This beautiful woman, Waitaiki, enchanted the taniwha, who kidnapped her and fled south with his prize. Waitaiki’s husband, the chief Tamaahua, discovered she was missing. Aided by a tekatekahe tracked them south. During Poutini’s flight the taniwha lit fires to keep Waitaiki warm. Amidst the charred remains of each fire, Tamaahua found precious stone.”

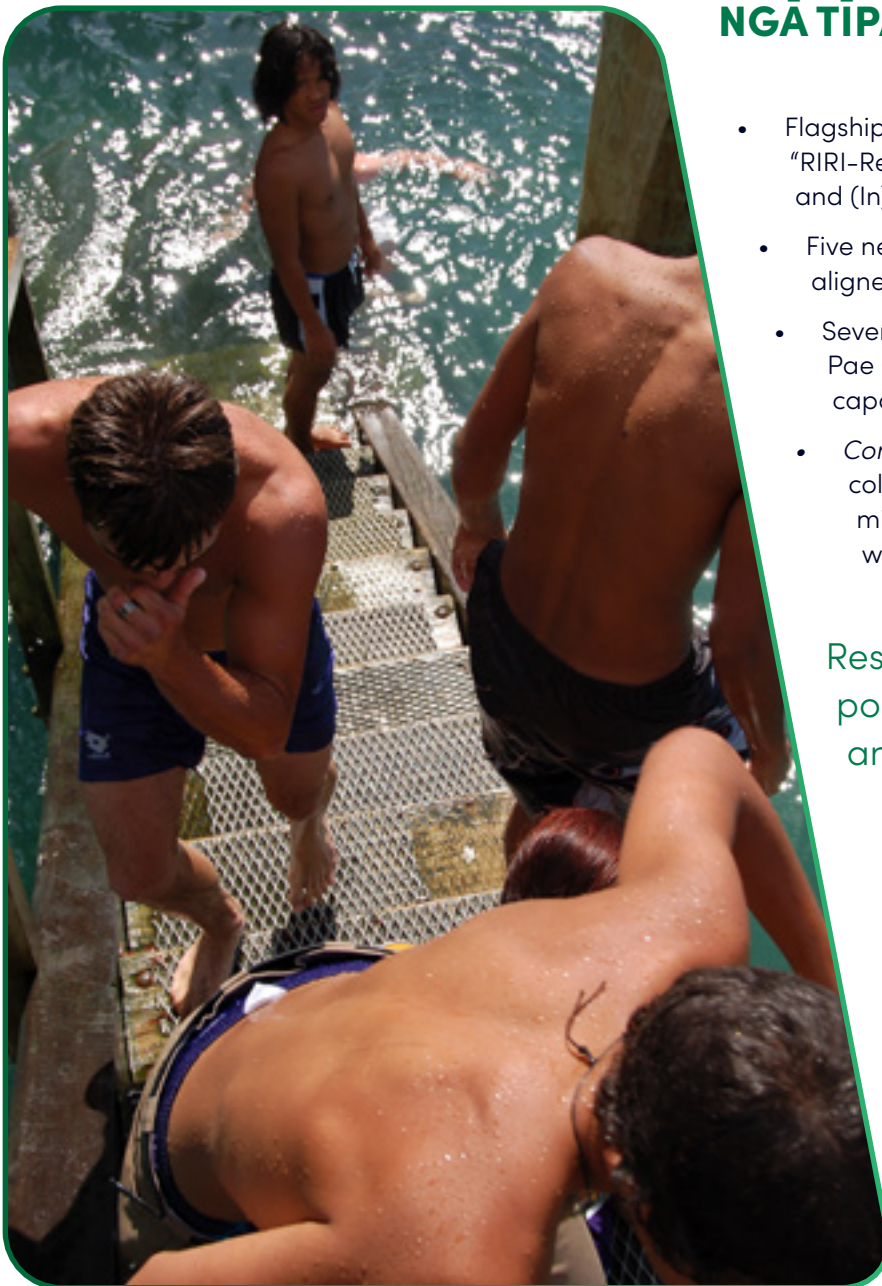
[READ MORE](#) 

PAE ORA

LIVING WELL

Ka whakawhenua tātou i a tātou anō, kia toitū te noho tahi mō āke tonu atu

In its broadest sense, Pae Ora is an expression of tino rangatiratanga. Pae Ora acknowledges the fundamental importance of whanaungatanga, with whānau located at the centre of decision-making about their lives and futures. Pae Ora advances research that values the lived experiences of Māori, discovers patterns of engagement with societal services and systems, and evolves strategies for transformative change that realises deep wellbeing with and for Māori.



NGĀ TĪPAKO | HIGHLIGHTS

- Flagship FIRST research programme “RIRI–Research to Interrupt Racism and (In)equity” is established
- Five new Matakiteanga projects aligned with Pae Ora outcomes
- Seven PhD Scholarships to support Pae Ora capacity and capability building
- *ConspiraSeries*, TV Mini Series—a collaboration to defend against misinformation—was launched with the support of NZ on Air

Research to influence positive change for healthy and meaningful lives

RIRI – RESEARCH TO INTERRUPT RACISM AND (IN)EQUITY

While the terms racism and equity are increasingly commonly used, action that meaningfully addresses racism and eliminates inequities is less common. New in 2023 and led by Associate Professor Donna Cormack, this team seeks to uncover how commitments to equity and ending racism are undermined, “non-performative” or symbolic only, and how they may need to be reconfigured in the context of Aotearoa to align with rangatiratanga. The programme has four workstreams, and each will deliberately foreground Māori as tangata whenua, particularly in relation to rangatiratanga. The team will: create spaces to facilitate thought leadership around racism and develop productive and creative ways to address racism; test analytical models to illuminate the mechanisms by which racism plays out in Māori lives; critically analyse equity definitions and narratives and their relation to racism, privilege and coloniality, to redefine the definition of equity and its application in Aotearoa; and, develop theoretical conceptualisations of the relationships between racism and (in)equity for Māori, thereby creating indicators for future research and interventions.

Lead – Associate Professor Donna Cormack (Kāi Tahu, Kāti Māmoe) University of Auckland

Dr Sarah-Jane Paine (Tūhoe) University of Auckland

Professor Papaarangi Reid (Te Rarawa) University of Auckland

Associate Professor Ricci Harris (Ngāti Kahungunu, Ngāti Raukawa, Ngāi Tahu) University of Otago

Dr Arama Rata (Ngāruahine, Taranaki, and Ngāti Maniapoto) Independent

Hana Burgess (Ngāpuhi, Te Ātihaunui a Pāpārangī) University of Auckland

International collaborators

Professor Keawe’aimoku Kaholokula (Kanaka Maoli) University of Hawaii at Manoa

Associate Professor Janet Smylie (Métis) University of Toronto

Professor Alex Brown University of Adelaide

Host – University of Auckland

[READ MORE](#) 

EXAMINING THE CONTRIBUTION OF MĀTAURANGA MĀORI TO CLIMATE HEALTH IN AOTEAROA

Indigenous people will be more severely affected by global climate change than other populations. Despite increasing awareness of these inequities, national and global responses to climate change often fail to address issues of specific concern to Indigenous peoples and tend to overlook the potential contribution of Indigenous knowledges. Indigenous peoples’ knowledges are based on holistic and interdependent understandings of the environment and have the potential to inform action towards climate transformation. In this Matakiteanga research project, Dr Ken Taiapa and his team will make an important contribution as they seek an understanding on how mātauranga Māori, as an Indigenous knowledge system, can transform climate health outcomes. The findings will provide much needed valuable insights to support Indigenous-centred climate change mitigation and adaptation in Aotearoa.

Lead – Dr Ken Taiapa (Ngāti Porou, Rongowhakaata, Te Whānau-ā-Apanui) (UoO) with Associate Professor Bridgette Masters-Awatere (Te Rarawa, Tūwharetoa ki Kawerau, Ngāi te Rāngi) (UoW), Dr Christina Mckerchar (Ngāti Kahungunu, Ngai Tūhoe, Ngāti Porou) (UoO), Assoc-Prof Rhys Jones (Ngāti Kahungunu) (UoA), Summer Wright (Ngāti Maniapoto) (MU).

Host – University of Waikato

[READ MORE](#) 

RANGAHAU | RESEARCH

AHAHOA HE ITI, HE POUNAMU HOW DO WAHINE MĀORI NURSES UTILISE MĀTAURANGA MĀORI AS A MEANS TO ADDRESS HEALTH EQUITY IN TE TAI TOKERAU?

Just 7% of all nurses in Aotearoa are Māori, despite two decades of rhetoric to increase their numbers proportionate to the populations they serve. Further, within the health sector Māori nurses are often marginalised and experience racism and discrimination together with ongoing pay disparity. Evidence from Aotearoa and overseas informs us that Indigenous knowledge practices are undervalued, yet incorporating them into healthcare delivery models leads to improved health outcomes. With the formation of Te Aka Whai Ora (the new Māori Health Authority), there is an opportunity to work with Māori health and iwi providers to strengthen the Māori nursing workforce and promote hauora. PhD researcher Coral Wiapo will explore from the experiences and stories of wāhine Māori nēhi how they use mātauranga Māori as they pursue equity for whānau, hāpori and iwi within Te Tai Tokerau.

PhD Researcher Coral Wiapo (Ngāti Whātua) University of Auckland. Supervisors and mentors – Terryann Clark (Ngāpuhi) (UoA), Sue Adams (UoA), Hemaima Reihana-Tait (Te Hauora o Ngāpuhi), Tania Cliffe-Tautari (UoA).

[READ MORE](#) 

TIHEI MAURIORA, TIHEI MANA MOTUHAKE BREATHING MAURI AND MANA MOTUHAKE INTO THE LIVES OF RANGATAHI MĀORI WHO OFFEND AND THEIR WHĀNAU WITH LIVED EXPERIENCE OF TRAUMA.

Exploring how trauma impacts Māori youth who offend, and their whānau, and how their lived experiences and Māori approaches can shape law and policy related to youth justice is the focus of this internship. Working alongside Dr Tania Cliffe-Tautari (University of Auckland) and Dr Luke Fitzmaurice (Victoria University of Wellington), Courtney and Danielle will develop policy briefs based primarily on existing literature and provide a much needed resource for policy and decision-makers and researchers

Courtney Smith (Ngāti Kahungunu ki te Wairoa) Eastern Institute of Technology & **Danielle Matthews** (Ngāpuhi) University of Auckland. Supervisors – Tania Cliffe-Tautari (UoA) & Luke Fitzmaurice (VUW)

[READ MORE](#) 

WHAKAAWEAWE | INFLUENCING TRANSFORMATION



TE KARERE, 28 JULY 2022. RESEARCH SHOW RONGOA MĀORI IS IMPROVING HEALTH OUTCOMES

NPM partner entity Whakauae Research with rongoa experts continue to be influential in promoting the health benefits of medicinal plants and practices.

[WATCH HERE](#) 

WHAKAATA MĀORI 15 SEPTEMBER 2022 THE STORY OF NGĀ TAMATOĀ (EPISODE 3)

Many NPM senior researchers are also foundation members of Ngā Tamatoa. This documentary highlights 50 years of promoting Māori rights, fighting against racial discrimination, and confronting injustices. The work continues.

[WATCH HERE](#) 



NPM research fellow, Dr Teorongonui Josie Keelan has been a member of Ngā Tamatoa since its earliest years. She celebrated its 50th anniversary with other members of Ngā Tamatoa

THE SPINOFF, 5 DECEMBER 2022. "I'M MĀORI FIRST": THE VISION-IMPAIRED COMMUNITY FINDING STRENGTH IN WHAKAPAPA



NPM researcher Associate Professor Bridgette Masters-Awatere says: "Once we put our foot in the water, we could see how murky the water is, how all the other voices speak over tāngata kāpō, how silenced Māori voices are, so we just wanted to bring to light the unseen experiences of Māori."

[READ MORE](#) 

CONSPIRASERIES — TV MINI SERIES, 2022. WELLY, COCKPITS, MOOSE AND TUPAC

2022 was the year that we stocked up on RAT tests, moved away from Alert Levels and lockdowns, and nursed ourselves back to wellness in place. It was also a year of confusion, protest, misinformation/disinformation, conspiracies and violence. In this collaboration, NPM supported the making of 'ConspiraSeries', a documentary series to empower rangatahi with the tools to assess misinformation and to make their own informed decisions on what they read online.

[WATCH HERE](#) 

IIRC2022 CLIMATE CHANGE, EQUITY AND HEALTH



Associate Professor Rhys Jones (Ngāti Kahungunu) University of Auckland was the lead keynote speaker at IIRC2022 and served to set the scene for critical conversations across the conference. Rhys has been at the forefront of climate health, change and equity, and a staunch advocate of living sustainably. His keynote framed climate change as a continued manifestation of colonisation, arguing that adaptation and mitigation strategies are doomed to fail as decisions on the world's health continue to be made through a colonial lens at the expense of other cultures, species and the planet.

"The explicit recognition of the rights of nature and restoring indigenous connection to the environment is critical to turning the climate crisis around" (Assoc Prof Rhys Jones).

Associate Professor Rhys Jones is a Public Health Physician and Associate Professor in Te Kupenga Hauora Māori (TKHM) at the University of Auckland where he contributes to oversight of Māori health teaching, learning and assessment in the Faculty of Medical and Health Sciences. In 2005–2006, he was a Harkness Fellow in Health Care Policy based at Harvard Medical School in Boston, USA, examining interventions to reduce racial and ethnic disparities in health care using organisational case studies. His researcher areas are: Māori health, health equity, health professional education, environmental health, and Climate change and health.

STUFF, 16 November, 2022 | Climate change a manifestation of colonisation, researcher says.

[READ MORE](#) 

MAHINGA HOU | NEW WORK

FIRST RESEARCH PROGRAMMES

RIRI – RESEARCH TO INTERRUPT RACISM AND (IN)EQUITY

Lead – Associate Professor Donna Cormack (Kāi Tahu, Kāti Māmoe) (UoA–Host) with Sarah-Jane Paine (UoA), Papaarangi Reid (UoA), Ricci Harris (UoO), Arama Rata (Independent), Hana Burgess (UoA).

[READ MORE](#) 

MATAKITENGA PROJECTS

EXAMINING THE CONTRIBUTION OF MĀTAURANGA MĀORI TO CLIMATE HEALTH IN AOTEAROA

Lead – Dr Ken Taiapa (Ngāti Porou, Rongowhakaata, Te Whānau-ā-Apanui) (UoO Host) with Bridgette Masters-Awatere (UoW), Christina Mckerchar (UoO), Rhys Jones (UoA), Summer Wright (MU).

[READ MORE](#) 



TOIORA, HAUORA: DEVELOPING MĀORI ARTS-BASED PEDAGOGY FOR WHĀNAU WELLBEING

Lead – Dr Hinekura Smith (Te Rarawa, Ngāpuhi) (UNITEC – Host) with Donna Campbell (UoW), Jani Wilson (MU).

[READ MORE](#) 

TIHEI MAURIORA, TIHEI MANA MOTUHAKE: BREATHING MAURI AND MANA MOTUHAKE INTO THE LIVES OF RANGATAHI MĀORI WHO OFFEND, AND THEIR WHĀNAU, WHO HAVE LIVED EXPERIENCE OF TRAUMA

Lead – Dr Tania Cliffe-Tautari (Te Arawa, Ngāi Tahu) (UoA Host) with Dr Luke Fitzmaurice (VUW).

[READ MORE](#) 

COMBATING BIAS IN SCHOOLS: A KAUPAPA MĀORI STUDY INTO STUDENTS' EXPERIENCES OF RACISM BY MĀORI, WITH MĀORI, FOR THE BENEFIT OF MĀORI

Lead – Dr Maia Hetaraka (Ngātiwai, Ngāi Tahu, Ngāpuhi, Ngāti Pāoa) (UoA Host) with Jo Smith (UoA), Frauke Meyer (UoA), Christine Rubie-Davies (UoA), Heather Came-Friar (AUT).

[READ MORE](#) 

WHAKAMANA: EMPOWERING WELL-BEING FOR RANGATAHI TAKATĀPUI

Lead – Dr Rāwiri Tinirau (Te Āti Haunui-a-Pāpārangī, Ngāti Rangī, Ngāti Tūwharetoa, Ngāti Kahungungu, Ngāi Tūhoe) (Te Atawhai o Te Ao Host) with Morgan Tupaea (Atawhai o Te Ao), Clive Aspin (VUW), Fern Smith (UoA), Logan Hamley (UoW), Cinnamon Lindsay Latimer (Hapai te Hauora), Donna Tuwhangai (Taumarunui Kōkiri Trust advisory board member).

[READ MORE](#) 

PHD SCHOLARS

AHAKOA HE ITI, HE POUNAMU: HOW DO WAHINE MĀORI NURSES UTILISE MĀTAURANGA MĀORI AS A MEANS TO ADDRESS HEALTH EQUITY IN TE TAI TOKERAU?

PhD Researcher: Coral Wiapo (Ngāti Whātua) (UoA)

Supervisors – Terryann Clark (UoA), Sue Adams (UoA), Hemaima Reihana-Tait (Te Hauora o Ngāpuhi), Tania Cliffe-Tautari (UoA).

[READ MORE](#) 

MANA TINANA, MANA MŌMONA, MANA WĀHINE: NGĀ PŪRĀKAU O NGĀ TINANA BODY SOVEREIGNTY AND FAT MĀORI WĀHINE

PhD Researcher: Ashlea Gillon (Ngāti Awa, Ngāpuhi, Ngāiterangi) (UoA)

Supervisors – Tracey McIntosh (UoA), Jade Le Grice (UoA), Melinda Webber (UoA), and the late Dr Cat Pausé (MU).

[READ MORE](#) 

MŌ NGĀ URI WHAKATIPU: WOMEN LEADERS PAVING A PATHWAY FOR FUTURE GENERATIONS IN GOVERNANCE

PhD Researcher: Stacey Ruru (Ngāti Hāua, Ngāti Raukawa) (UoW)

Supervisors – Bridgette Masters-Awatere (UoW), Chellie Spiller (UoW), Amohia Boulton (Whakauae Research Services Ltd), Utiku Potaka (Whakauae Research Services Ltd).

[READ MORE](#) 

KAWA WHAKARURUHAU: CULTURALLY-SAFE SPACES FOR MĀORI NURSES PRACTICE DEVELOPMENT

PhD Researcher: Jennifer Tokomauri McGregor (Ngāti Raukawa, Waikato) (AUT)

Supervisors – Alayne Mikahere-Hall (AUT), Denise Wilson (UoA).

[READ MORE](#) 

TE KAI ORA A KĀI TAHU: CONCEPTUALISING KĀI TAHU KAI SOVEREIGNTY AND MĀORI NUTRITION DATA SOVEREIGNTY

PhD Researcher: Hannah Rapata (Kāi Tahu) (UoA)

Supervisors – Donna Cormack (UoA/UoO), Erena Wikaire (UoA).

[READ MORE](#) 

THE INEQUITIES OF THE NASC SYSTEM IN AOTEAROA FOR WHAIKAHA MĀORI

PhD Researcher: Emily Atireira Bain (Ngāti Raukawa ki te Tonga, Ngāti Toa Rangatira) (UoO)

Supervisors – Esther Willing (UoO), Arianna Nisa-Waller (UoO).

[READ MORE](#) 

HE ORANGA TUKU IHO: ORANGA THROUGH MAHINGA TOI. HE TIROHANGA NŌ TE WHĀNAU-Ā-APANUI.

PhD Researcher: Kahurangi Waititi (Te Whānau-ā-Apanui, Ngāti Porou, Ngāi Tahu) (UoW)

Supervisors – Linda Tuhiwai Smith (TWWoA), Lisa Perrott (UoW).

[READ MORE](#) 

2022/2023 NPM RAUMATI INTERNSHIP GRANT RECIPIENTS

TIHEI MAURIORA, TIHEI MANA MOTUHAKE: BREATHING MAURI AND MANA MOTUHAKE INTO THE LIVES OF RANGATAHI MĀORI WHO OFFEND AND THEIR WHĀNAU WITH LIVED EXPERIENCE OF TRAUMA

Courtney Smith (Ngāti Kahungunu ki te Wairoa) (EIT) and **Danielle Matthews** (Ngāpuhi) (UoA)
Supervisors – Tania Cliffe-Tautari (UoA), Luke Fitzmaurice (VUW).

[READ MORE](#) 

HEALTH SYSTEMS AND DECOLONISATION: PRELIMINARY ACTIVITIES TO UNDERSTAND HEALTH SYSTEM PERSPECTIVES

Nadine Everson (Te Arawa) (UoA)
Supervisor – Karen Wright (UoA).

[READ MORE](#) 

A KAUPAPA MĀORI LITERATURE REVIEW OF CANNABIS AND METHAMPHETAMINE USE EXPERIENCES OF MĀORI

Te Hīrea Doherty (Tūhoe, Ngāti Awa, Ngāti Pūkenga, Ngāpuhi) (UoO)
Supervisor – Erena Wikaire (TWWoA).

[READ MORE](#) 

FLOURISHING WĀHINE MĀORI IDENTITIES IN WOMEN'S RUGBY

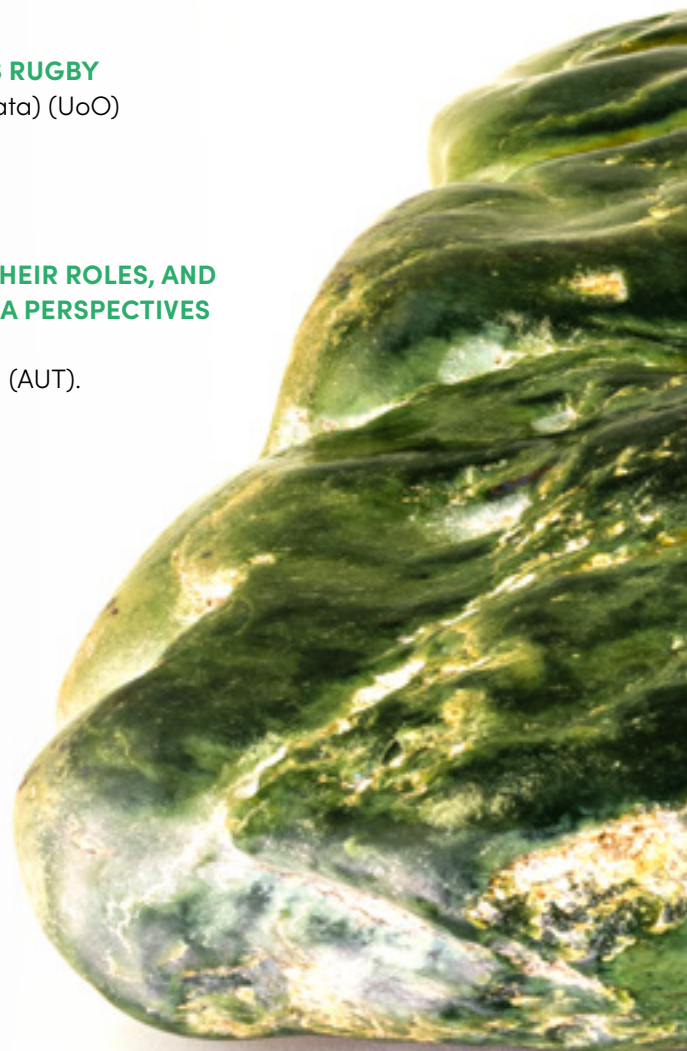
Hinemoa Watene (Ngāti Whātua, Ngāpuhi, Rongowhakaata) (UoO)
Supervisor – Jeremy Hapeta (UoO).

[READ MORE](#) 

TRADITIONAL UNDERSTANDINGS OF WĀHINE MĀORI, THEIR ROLES, AND MAINTENANCE OF THEIR SAFETY : KAUMATUA AND KUIA PERSPECTIVES

Hana Vause (Ngāti Kahungunu ki Wairarapa) (UoA)
Supervisors – Denise Wilson (AUT), Alayne Mikahere-Hall (AUT).

[READ MORE](#) 



HE MAURI TŌ TE TAMAITI : ĀKONGA MĀORI MOTIVATION IN EDUCATION

Kate Palmer-Neels (Ngāpuhi) (UoA)
Supervisor – Melinda Webber (UoA).

[READ MORE](#) 

EHEALTH INITIATIVES IN SURGERY: CULTURAL CO-DESIGN OF A GENERAL SURGICAL PATIENT-CENTRED APP

Te Hau Ariki Gardiner (Ngāi te Rangī, Ngāti Ranginui, Ngāpuhi) (UoO)
Supervisor – Karyn Paringatai (UoO).

[READ MORE](#) 

EXPLORING THE LONG-TERM IMPACT OF COVID ON THE SOCIAL, CULTURAL, MENTAL, AND PHYSICAL WELLBEING OF INDIVIDUALS, COMMUNITIES, AND WORKPLACES [CO-FUNDED WITH THE METHODIST MISSION NORTHERN]

Ashleigh Witehira (Ngāpuhi, Whakatohea, Tainui) (MU)
Supervisor – Kiri Edge (UoA).

[READ MORE](#) 



ĒTAHI PUTANGA | SELECTED OUTPUTS

Ngā Pae o te Māramatanga. (2022, December 5). *"I'm Māori first": The vision-impaired community finding strength in whakapapa*. The Spinoff.

[READ MORE](#) 

Jones, R. (2022, November 15-18). *Indigenous climate justice: From decarbonisation to decolonisation and relational restoration* [Keynote speaker]. 10th Biennial International Indigenous Research Conference 2022, Online.

[WATCH HERE](#) 

Brittain, E. (2022). *Ko wai, ko wairua: Narratives of wairua and wellbeing*. [Doctoral thesis, Massey University]. Massey Research Online.

[READ MORE](#) 

Campbell, J. D. C. (2022). *Development of non-invasive, optical methods for central cardiovascular and blood chemistry monitoring*. [Doctoral thesis, University of Canterbury]. UC Research Repository.

[READ MORE](#) 

Gunn, T. R. (2022). *Wairua, affect and national commemoration days*. [Doctoral thesis, Massey University]. Massey Research Online.

[READ MORE](#) 

Reweti, A. (2022). *Mā te whiritahi, ka whakatutuki ai ngā pūmanawa ā tāngata = Together weaving the realisation of potential: Exploring the social, cultural and health benefits of whānau-centred initiatives*. [Doctoral thesis, Massey University]. Massey Research Online.

[READ MORE](#) 

Taiapa, K. (2022). *Te Moeone Mārakai: Connection, ahi kā and healing*. [Doctoral thesis, Massey University]. Massey Research Online.

[READ MORE](#) 



Celebrating 20 years – Te Tatau Pounamu

The NPM Traditional Knowledge Conference 2008 focused on traditional knowledge and gateways to balanced relationships. The conference title, Te Tatau Pounamu: The Greenstone Door, referred to how, in times of trouble, peace could be secured and warfare ended through a political marriage and the exchange of greenstone. In line with the title, the conference provided the occasion for discussion of Indigenous strategies for sustaining relationships between collectives and over generations, for resolving conflict, peace-making, reconciliation and restorative justice.

[READ CONFERENCE PROCEEDINGS](#) 

PAE TAWHITI

LIVING LIGHTLY

Ka whakawhenua tātou i a tātou anō, kia toitū te noho tahi mō āke tonu atu

Pae Tawhiti enables research into healthy and liveable environments, and meaningful work and enduring livelihoods, particularly those with a whānau focus. Strengthening the capacity of whānau to be self-determining and self-sufficient in their daily lives will awaken and enhance the ability to imagine different futures and outcomes. The nature of work is also rapidly changing, as it requires the training of different and more portable skill sets and the removal and reduction of societal impediments. Pae Tawhiti research considers alternative economic models and laws driven by Māori values and valuing Māori forms of participation and engagement.



NGĀ TĪPAKO | HIGHLIGHTS

- A comprehensive research package was launched to generate Te Ao Māori knowledge and applications for possible, provocative and preferable transformation pathways towards flourishing Māori futures.
- *Te Niho o te Taniwha* research team actively engaged with Te Puni Kōkiri: Ministry of Māori Development to provide timely policy advice.
- *The Toitū He Kainga* research programme began their exploration of healthy environmental relationships in urban settings.
- The International Indigenous Climate Change Research Summit for 2023 was announced at IIRC2022.
- Previous NPM Co-Director Professor Jacinta Ruru was awarded the Distinguished Research Medal by the University of Otago.
- Kākāpō numbers increased from 197 to 252 in the 2022 breeding season.
- Pou Pacific Professor Yvonne Underhill-Sem led out on an MFAT-funded programme of research on climate im/mobilities in the Pacific.

Research to grow responsible social, economic and environmental relationships

HE ORANGA WHĀNAU: MAHI NGĀTAHI – WHĀNAU LIVELIHOODS AND WELLBEING

Professor Chellie Spiller leads this high-performing multidisciplinary team of experts to find ways to accelerate Māori livelihoods and enterprise within the broader concept of a Māori wellbeing economy. The purpose of this programme of research is to transform the lives of whānau through meaningful, targeted research that enhances whānau chances of long-term survival through sustainable work, business and employment. This team has created a *Present-Future-Pathway* framework to help guide their work. *Present* provides a stocktake of the current situation, mapping the Māori economy as it stands; *Future* details a fully realised vision of a functioning well being economy, outlining the practical parameters in which an achievable wellbeing economy would operate; while *Pathway* provides the strategies, policies, and, actions needed across the Māori economy to transition from the Present to the Future, as well as to determine the nature and timing of each phase and the necessary indicators for measuring progress. Their 12-month programme report *Te Niho o te Taniwha* provides a comprehensive context for the research and begins to map possible pathways toward Māori wellbeing economies for whānau.

Lead – Professor Chellie Spiller (Ngāti Kahungunu ki Wairoa) University of Waikato
Professor Jarrod Haar (Ngāti Maniapoto, Ngaati Mahuta) Auckland University of Technology
Dr John Reid (Ngāti Pīkiao, Tainui) University of Canterbury
Dr Jason Mika (Tūhoe, Ngāti Awa, Whakatōhea, Ngāti Kahungunu) University of Waikato
Dr Matthew Rout, University of Canterbury

Host – University of Waikato

[READ MORE](#) 

TOITŪ HE KĀINGA – HEALTHY ENVIRONMENTAL RELATIONSHIPS IN URBAN SETTINGS

Most Māori live and work in Aotearoa New Zealand towns and cities. As modern-day kāinga (settlements), towns and cities are a complex extension of urban Māori lived experience. Generations of Māori have built new relationships with whenua in towns, developed artful and ingenious responses to changing ecological environments, and carved out new ways of identifying with and living in urban spaces. Initiated in 2022, this research programme explores how Māori-driven sustainability efforts (mahi toitū) in urban settings promote Māori identity and address environmental concerns, including climate change. This expert and strategically connected team will ask: how do urban ecological relationships “set in place” the Indigenous people who live there – creating “Tu” cities? Finding the answer to this question will create a better understanding of how Māori identity, mahi toitū and rangatiratanga contribute to flourishing lives that can deeply shape urban spaces into sustainable kāinga of the future.

Lead – Professor Michelle Thompson Fawcett (Ngāti Whātua) University of Otago,
Dr Robin Quigg (Raukawa, Ngāti Tamaterā) University of Otago
Dr James Berghan (Te Rarawa, Te Aupōuri) University of Otago
Dr Crystal Victoria Olin, University of Otago
Dr Rebecca Kiddle (Ngāti Porou, Ngāpuhi) Head of Urban Development, Hutt City Council (in conjunction with wāhine Māori Kiri Waldergrave and Wendy Moore at Hutt City), Community Researcher
Dr Jeanette Wikaira (Ngāti Tamaterā, Ngāti Pūkenga, Ngāpuhi) Dunedin City Council
Ms Ella Cameron-Smith (Ngāti Ranginui, Waikato) University of Otago
Mr Sam Yorston (Ngāi Tahu/Kāi Tahu) University of Otago

Host – University of Otago

[READ MORE](#) 

TE KŌRERO Ā TE REPOREPO – UNDERSTANDING THE CONNECTION BETWEEN TOHU, TE MARAMATAKA AND THE HEALTH OF TE TAIAO

Empowering rangatahi in the Hokianga, this Matakiteinga project will see rangatahi researchers draw upon their local knowledge to provide a rangatahi perspective of restoring the environment using Māori and Western approaches to science. In response to diminished ecosystems, several Hokianga kura, marae and, hāpori are exploring their own solutions to restoring the taiao and their pātaka kai, through the learnings embedded in kōrero tuku iho. These kaupapa strengthen identity and te reo ā-iwi, while rejuvenating mātauranga and tūpuna practices. The project aims to understand the connection between, tohu of the reporepo, phases of the maramataka and the “health” of local ecosystems. It will empower local rangatahi and whānau to explore and monitor their local environment utilising modern technologies alongside Māori knowledge.



Lead – Dr Isaac Warbrick (Ngāti Te Ata, Ngāti Rangitīhi, Ngāpuhi) (AUT), with Dr Valance Smith (Ngāpuhi, Waikato) (AUT), Rereata Makiha (Te Mahurehure, Te Arawa), Aylah Williams (Ngāpuhi, Te Rarawa, Ngāti Mahuta, Maniapoto) and Pairama Wood (Ngāti Korokoro, Ngāpuhi)

Host – Auckland University of Technology

[READ MORE](#)

TIKANGA AND TE TIRITI – TRANSFORMING LAW AND POLICY IN AOTEAROA BORRIN FOUNDATION – NGĀ PAE O TE MĀRAMATANGA LEGAL RESEARCH INTERNSHIP AWARD

Continuing our relationship with the Borrin Foundation, we are pleased to support two legal research internship awards. Under the expert guidance of Associate Professor Linda Te Aho at the University of Waikato, Nikorima and Piripi will document how tikanga and Te Tiriti are transforming legal and policy settings in Aotearoa. Examples of statutory recognition include the Oranga Tamariki Act 1989, and legal personhood in Te Urewera Act 2014 and Te Awa Tupua (Whanganui River Claims Settlement Act) 2017. More recently, the government has introduced the Natural and Built Environments Bill and Spatial Planning Bill, intended to replace the Resource Management Act. Government and other public-sector entities are beginning to incorporate tikanga into their decision-making frameworks. Recent decisions of the Supreme Court in *Ellis v R* and *Trans-Tasman Resources* as well as High Court decisions on *Takutai Moana* claims provide further examples of how tikanga and Te Tiriti are transforming legal settings in Aotearoa. The interns will review and analyse case law and legislation as part of a wider transformation across Aotearoa.



Interns Nikorima Te Iwi Ngāro Nuttall (Raukawa) University of Waikato and **Noah Piripi Kemp** (Te Āti Awa, Ngāpuhi, Ngāti Tūwharetoa) Te Wānanga o Aotearoa
Supervisor – Associate Professor Linda Te Aho (UoW)

Host – University of Waikato

WHAKAAWEAWE | INFLUENCING TRANSFORMATION



We celebrate with Professor Jacinta Ruru, who was awarded the Distinguished Research Medal by the University of Otago

STUFF 19 SEPTEMBER 2022 MĀORI LEGAL SCHOLAR TAKES OUT TOP RESEARCH AWARD

NPM continues to be amazed by the achievements of prior NPM Co-Director Professor Jacinta Ruru, who is a Māori law trailblazer focused on the environment and tikanga Māori. We celebrate her being awarded the Distinguished Research Medal by the University of Otago, which reflects her achievements her achievements in this research domain. She continues the quest for possible, provocative, and preferable transformation pathways towards flourishing Māori futures.

[READ MORE](#) 

THE SPINOFF, 1 JUNE 2022. THE PLACE FOR MĀTAURANGA MĀORI IS ALONGSIDE SCIENCE

Since colonisation, mātauranga Māori has been pushed aside by Western notions of science. NPM research leader Associate Professor Ocean Mercier explains how the two can coexist, and why it is crucial for Aotearoa that they do.

[READ MORE](#) 



NPM WEBINAR, 26 JULY 2022. SETTING ONE'S SIGHTS ON UNIVERSITIES ABROAD

NPM has enjoyed a long-standing relationship with the Michael and Suzanne Borrin Foundation. Our inaugural postgraduate scholarship recipient, Benjamin Morgan (Ngāti Awa, Te Patuwai) was supported to attend Harvard University in 2021. In this 2022 webinar, Ben is joined by NPM Co-Director Tahu Kukutai and Tupe Solomon-Tanoa'i of Borrin, to unpack his journey through the application process and to encourage others to set their sights high.

[WATCH HERE](#) 

KĀKĀPŌ ADOPTION, 2022. KUMI AND KUIA

Kākāpō breed only in years when the local trees, particularly rimu, are full with fruit, which they feed to their chicks. 2022 was one such year. Kākāpō numbers increased from 197 to 252 in the 2022 breeding season. But the next breeding season will not come round again for another 2-3 years, meaning that there will be some attrition. Kākāpō remains critically endangered. Through the Kākāpō Recovery Adoption programme, NPM is proud to support Kumi and Kuia. We wish to thank those who gave generously to our sponsorship initiative during our International Indigenous Research Conference and to Professor Jacqueline Beggs of the Kākāpō Recovery Group for addressing the conference. Our work continued over the summer with Raumatī intern Moana Murray scouring the archives for reference to Kākāpō to better understand the contribution of this manu within Te Ao maori. Our care for kākāpō is to take care of our whakapapa.



Photograph: Theo Thompson

[READ MORE](#) 

The Taiwan Connection



In Asia, only Japan, Taiwan and the Phillipines have explicitly recognised the existence of Indigenous peoples on their territories. Yet, Taiwan is a very special and interesting case. Excluded from the UN as a state, Taiwan has nonetheless been represented by Indigenous groups at UN events for the rights of Indigenous peoples for many years. Professor Jolan Hsieh / Bavarahg Dagalomai (Siraya) of the National Dong Hwa University, Taiwan, keynoted at IIRC2022 on human rights, social justice and scholar activism. Professor Hsieh is a Professor of Ethnic Relations and Cultures, and the Director of the Center of International Indigenous Affairs at the College of Indigenous Studies, National Dong Hwa University, Taiwan. Jolan has served with many national, regional and organisations as an Indigenous scholar and activist. She has also served as Co-Chair of the World Indigenous Nationals Higher Education Consortium. Jolan is active in Indigenous language and cultural revitalisation movements and critiques Indigenous policies. Throughout her academic and professional experiences, she has focused on research examining the topic of social (in)justice linked to human rights and activism.

[WATCH PROFESSOR HSIEH KEYNOTE ADDRESS HERE](#) 

MAHINGA HOU | NEW WORK

FIRST RESEARCH PROGRAMMES

HE ORANGA WHĀNAU: MAHI NGĀTAHI – WHĀNAU LIVELIHOODS AND WELLBEING

Lead – Professor Chellie Spiller (Ngāti Kahungunu ki Wairoa) (UoW Host) with Jarrod Haar (AUT), John Reid (UC), Jason Mika (UoW) and Matthew Rout (UC).

[READ MORE](#) 

TOITŪ HE KĀINGA – HEALTHY ENVIRONMENTAL RELATIONSHIPS IN URBAN SETTINGS

Lead – Professor Michelle Thompson Fawcett (Ngāti Whātua) (UoO Host) with Robin Quigg (UoO), James Berghan (UoO), Crystal Victoria Olin (UoO), Rebecca Kiddle (Hutt City Council) Kiri Waldergrave (Hutt City Council), Wendy Moore (Hutt City Council), Jeanette Wikaira (Dunedin City Council), Ella Cameron-Smith (UoO), and Sam Yorston (UoO).

[READ MORE](#) 

MATAKITENGA PROJECTS

TE KŌRERO Ā TE REPOREPO – UNDERSTANDING THE CONNECTION BETWEEN TOHU, TE MARAMATAKA AND THE HEALTH OF TE TĀIAO

Lead – Dr Isaac Warbrick (Ngāti Te Ata, Ngāti Rangitihi, Ngāpuhi) (AUT Host), with Valance Smith (AUT), Rereata Makiha, Aylah Williams and Pairama Wood (Independent).

[READ MORE](#) 

RAUMATI INTERNSHIPS

HE HAKUNE RANGAHAU O TE ATIWA: WHAT COULD A TE ATIWA RESEARCH MODEL AND METHODOLOGY LOOK LIKE? (CO-FUNDED WITH BIO-HERITAGE NATIONAL SCIENCE CHALLENGE)

Tama Blackburn (Ngāti Maniapoto, Ngāti Kinohaku) University of Canterbury
Supervisors – Kiri Edge and Linda Waimarie Nikora (UoA)

[READ MORE](#) 

HE ORANGA WHĀNAU: MAHI NGĀTAHI WHĀNAU LIVELIHOODS WITHIN THE CONTEXT OF WORK AND MĀORI ECONOMIES OF WELLBEING

Jasmine Fraser (Te Arawa, Ngāti Rangitihi, Ngāti Kahungunu, Ngāti Raukawa, Ātihaunui ā Pāpārangi) University of Waikato.
Supervisors – Chellie Spiller (UoW) & Jason Mika (UoW)

[READ MORE](#) 

MĀTAURANGA MĀORI RESEARCH AND LEARNING RESOURCES (CAWTHON – NGĀ PAE O TE MĀRAMATANGA TE PĪTAU WHAKAREI KARAHĪPI INTERNSHIP AWARD)

Toiroa Whaanga-Davies (Ngāti Rakaipaaka, Ngāti Kahungunu, Ngāti Rehua, Ngāti Wai) University of Otago.
Supervisor – Heni Unwin (Cawthron)

[READ MORE](#) 

TIKANGA AND TE TIRITI – TRANSFORMING LAW AND POLICY IN AOTEAROA (BORRIN FOUNDATION – NGĀ PAE O TE MĀRAMATANGA LEGAL RESEARCH INTERNSHIP AWARD)

Nikorima Te Iwi Ngaro Nuttall (Raukawa) University of Waikato and **Noah Piripi Kemp** (Te Aati Awa, Ngaapuhi, Ngaati Tuuwharetoa) Te Wānanga o Aotearoa
Supervisor – Linda Te Aho (UoW)

[READ MORE](#) 



ĒTAHI PUTANGA | SELECT OUTPUTS

Rout, M., Spiller, C., Reid, J., Mika, J., & Haar, J. (2022). *Te Niho o te Taniwha: The teeth of the Taniwha. Exploring present-future pathways for whānau and hapū in Māori economies of wellbeing.*

[READ MORE](#) 

Ngā Pae o te Māramatanga. (2022, June 1). *The place for mātauranga Māori is alongside science.* The Spinoff.

[READ MORE](#) 

Hsieh, J. (2022, November 15-18). *Human rights, social justice, scholar activism* [Keynote speaker]. 10th Biennial International Indigenous Research Conference 2022, Online.

[WATCH HERE](#) 

Beverland, M. J. H. (2022). *Kaitiakitanga : Māori experiences, expressions, and understandings.* [Doctoral thesis, Massey University]. Massey Research Online.

[READ MORE](#) 

Steadman, J. (2022). *The “perfect” gay man: An exploration of perfectionism with gay men in New Zealand.* [Doctoral thesis, Massey University]. Massey Research Online.

[READ MORE](#) 



Celebrating 20 years – He Mangōpare Amohia

Published in 2015, *He Mangōpare Amohia* is a report on a NPM programme of research that lifted the lid on iwi economic development. Best practice insights are examined through collaborative research relationships with Ngāti Awa, Ngāti Kahungunu, Te Whānau-ā-Apanui and Ngāpuhi. The report continues to inform present-day development challenges and theorising, and has been a central touchstone for research and policy that has followed it.



[READ MORE](#) 

PAE AUAHA

LIVING SMARTLY

Whakaumutia te whakaaro, whakaumutia te hangarau, whakaumutia te ao

Pae Auaha enables research to secure the technological foundations for flourishing Māori futures. Our research supports the creative capacity of Māori to fashion and advance a distinctively Māori vision of how data and technology can support the wellbeing of our people, language, culture and environments. Pae Auaha draws together technologists, social scientists, artists and knowledge holders to theorise, create and implement solutions that are tika for both people and the planet, and designed with future mokopuna in mind.



NGĀ TĪPAKO | HIGHLIGHTS

- Pou Pae Auaha Associate Professor Te Taka Keegan was appointed Co-Director of the Board of Science for Technological Innovation (SfTI) National Science Challenge
- Pou Matarua Professor Tahu Kukutai gave a talk on Māori data sovereignty to 400+ attendees at the National Library's E oho! Waitangi 2022 series
- Peter Lucas-Jones of Te Hiku Media gave a keynote on Indigenous data science, digital tools and language generation at the 10th International Indigenous Research Conference IIRC2022
- The IDSov Collab (IIRC2022) releases the Indigenous Data Sovereignty and Universities Communiqué
- An international panel of highly regarded Indigenous data sovereignty experts attended IIRC2022.

Research to nurture wise and ethical technological transformations

RANGAHAU | RESEARCH

MOTITI WHENUA | THE SEEN AND THE UNSEEN

The whenua of Motiti marae and Tapuiwahine A12 landblocks, southwest of Te Kuiti, is home to a rich sound ecology shared by organisms, plants and humans. Led by musical artist and researcher, Dr Maree Sheehan, this project explores how sonic mapping and LiDAR scanning technology can listen to, and better understand, the rhythms of Papatuānuku. LiDAR airborne laser scanning offers the ability to map the ground hidden by vegetation, whether it be forest, scrub or long grass. Laser pulses find gaps through to the ground and return accurate data for the creation of digital terrain models and contours. Little is currently known about the role and importance of the sound acoustic context and how LiDAR scanning might support the health, vitality and sustainability of the whenua and the awa. The project is being undertaken with the support of the principal hapū associated with Motiti marae: Ngāti Te Puta-i-te-muri, Ngāti Tauhunu, Ngāti Urunumia and Ngāti Kinohaku. The marae connects ancestrally to the Tainui waka, the maunga Kakepuku and Pirongia, the awa Mangapū and the tribal collective of Ngāti Maniapoto.

Lead – Dr Maree Sheehan (Ngāti Maniapoto, Ngāti Tūwharetoa, Raukawa, Ngāti Tahu-Ngāti Whāoa), (AUT) with Dr Valance Smith (Ngāpuhi, Waikato) (AUT), Associate Professor Maui Hudson (Te Whakatōhea) (UoW) & Dr Claudio Aguayo (Independent)

Host – Host, Auckland University of Technology

WHAKAWEAWE | INFLUENCING TRANSFORMATION

INDIGENOUS DATA SOVEREIGNTY

[Indigenous data sovereignty](#) is a topic of growing importance in Aotearoa and internationally and NPM researchers are at the forefront of research, knowledge translation and, advocacy. Pou Matarua Professor Tahu Kukutai chaired a roopu of Māori data experts, including NPM senior researcher Donna Cormack, who designed a Māori Data Governance Model for government-held Māori data. The work was undertaken on behalf of the National Iwi Chairs Forum Data Iwi Leadership Group. Tahu and Donna also gave talks on data sovereignty to forums including the GOVIS22 conference for government IT professionals, the World Bioethics Congress, the Indigenous Science, Research and Innovation Symposium hosted by CSIRO and IIRC2022.



IIRC2022 gathered experts from across the globe to raise concerns about Indigenous data sovereignty.

Indigenous sovereignty over Indigenous research data was a key concern raised by the IDSov Collab held as part of IIRC2022. The Collab involved 11 Indigenous researchers, including graduate students, based in Aotearoa and the United States. The [Communiqué](#) called on universities to take action and to address specific issues relating to Indigenous data ownership, control, access, analysis and storage. Professor Jacquie Kidd (Ngāpuhi) discussed the IIRC22 IDSov Communiqué with reporter Katie Doyle of STUFF on 14 December 2022, highlighting that Indigenous communities need to have a say in how their data are used and how their stories are presented.

[READ MORE](#)

MĀORI AND ARTIFICIAL INTELLIGENCE

Te Taka Keegan (Waikato-Maniapoto, Ngāti Porou, Ngāti Whakaue) has long been known for his innovative work at the nexus of computer science and te reo Māori revitalisation. In 2022 he spearheaded a number of collaborative initiatives to bring Te Ao Māori thinking into the forefront of artificial intelligence in Aotearoa. Alongside colleagues from the University of Waikato, Te Taka brought together AI experts across Aotearoa to hold a [Māori AI](#)



Māori experts gathered together in 2022 to discuss artificial intelligence implications for Māori.

[wānanga](#). The two day hui included workshops and discussions around understanding AI and, decolonising algorithms, Māori involvement in AI, and where AI in Aotearoa should be heading. One of the participants was statistician Dr Paul Brown (Ngāti Hikairo) who has been working with Daniel Wilson (Ngāpuhi, Ngāti Pikiao) and others to develop 'He Kokonga Hātepa'- a model for decolonising algorithms – which they presented at IIRC2022. Paul has also been engaged to [provide statistical expertise](#) to the multi-year 'Understanding Policing Delivery research programme'. The research programme is overseen by an independent panel, chaired by Tā Kim Workman, that was set up to investigate systemic bias within the NZ Police.

Te Taka has also been exploring how smart home technologies can be used to promote te reo Māori in the home. He gave a [presentation on this kaupapa](#) at the Conference of the Foundation for Endangered Languages XXVI (–2022). Te Taka also supervised NPM Raumatī Intern Keenen Wood (Ngāti Maniapoto, Tainui, Ngāti Koata, Ngāti Rarua, Ngāti Toa Rangatira) to try to develop an openHAB plugin for the smart home openHAB system that can understand commands in the medium of te reo Māori.

RADIO NEW ZEALAND, 1 AUGUST 2022. HEADS IN THE CLOUDS? CALLS FOR NZ TO TAKE CONTROL OF DATA STORAGE

Professor Tahu Kukutai talked about the risks of offshoring Māori data and the need for strategic investment in a wider range of options to protect Māori data as a taonga.

[READ MORE](#) 

THE SPINOFF 28 SEPTEMBER 2022. HOW CUTTING-EDGE VIRTUAL REALITY IS MAKING MARAE MORE ACCESSIBLE

NPM researcher Dr Rory Clifford (Kai Tahu, Kāti Māmoe) discussed how his research used VR tech to digitise a marae in Motupōhue (Bluff) and help whānau reconnect with their tūrangawaewae.

[READ MORE](#) 

MIT TECHNOLOGY REVIEW 22 APRIL 2022. A NEW VISION OF ARTIFICIAL INTELLIGENCE FOR THE PEOPLE

Te Hiku Media – headed by IIRC2022 keynote Peter Lucas-Jones, talked to MIT Technology about how Te Hiku is challenging what AI could be and who it should serve.

[READ MORE](#) 

IIRC 2022 INDIGENOUS DATA SCIENCE, DIGITAL TOOLS AND LANGUAGE REGENERATION

NPM was delighted to host Peter-Lucas Jones (Te Aupōuri, Ngāi Takoto, Ngāti Kahu) Te Hiku Media, Aotearoa as a premiere keynote speaker at our 10th Biennial International Indigenous Research Conference. Peter-Lucas is the Chief Executive Officer of Te Hiku Media and an experienced governor in the Māori media eco-system. He is the Chair of Te Whakaruruhau o Ngā Reo Irirangi Māori, Chairman of Te Rūnanga Nui o Te Aupōuri, Deputy Chair of Māori Television, and an advisory board member of Te Pūnaha Matatini, a Centre of Research Excellence for Complex Systems. Peter addressed the conference on the work Te Hiku Media has been involved in, including the Papa Reo project, a multilingual language platform grounded in Indigenous knowledge and ways of thinking powered by cutting-edge data science. He highlighted the importance of sovereignty over data, platforms, and technologies, and provided examples of how Te Hiku Media is challenging some of the issues Indigenous communities have been facing.

[WATCH HERE](#) 

MAHINGA HOU | NEW WORK

PHD SCHOLAR

PROTECTING NGĀTI TIIPA HAPŪ DATA SOVEREIGNTY

PhD scholar: **Ella Newbold** (Waikato, Ngāti Porou) (UoW)

Supervisor – Tahu Kukutai (UoW)

[READ MORE](#) 

RAUMATI INTERNSHIP

TE REO MĀORI SMART HOME VOICE ASSIST

Keenen Wood (Ngāti Maniapoto, Tainui, Ngāti Koata, Ngāti Rarua, Ngāti Toa Rangatira) (UoA)

Supervisor – Te Taka Keegan, Mark Apperley, Peter Reutemann (UoW)

This applied project focused on the development of an openHAB plugin for the smart home openHAB system that can understand commands in the medium of te reo Māori. The project was designed to develop the intern's experience with software development and smart home technology, while also making a contribution to supporting the revitalisation of te reo Māori and enhancing its relevance for future generations.

ĒTAHI PUTANGA | SELECTED OUTPUTS

Jones, P.-L. (2022, November 15-18). *Indigenous data science, digital tools and language regeneration* [Keynote speaker]. 10th Biennial International Indigenous Research Conference 2022, Online.

[WATCH HERE](#) 

Ngā Pae o te Māramatanga. (2022, September 28). *How cutting-edge virtual reality is making Marae more accessible*. The Spinoff.

[READ MORE](#) 

Keegan, T. T., Apperley, M., & Reutemann, P. (2022, November 2-4). *Indigenous language promotion in a smart home*. Foundation for Endangered Languages XXVI – (2022), University of New Mexico.

[READ MORE](#) 

Peters, R. G. (2022). *Televised sport coverage in New Zealand: Between global capitalism and cultural citizenship* [Doctoral thesis, Auckland University of Technology]. AUT Tuwhera open access.

[READ MORE](#) 

Fa'avae, D. T. M., Faleolo, R. (Lute), Hepi Havea, 'Elisapesi, Enari, D., Wright, T., & Chand, A. (2022). e-talanoa as an online research method: Extending vā-relations across spaces. *AlterNative: An International Journal of Indigenous Peoples*, 18(3), 391-401.

[READ MORE](#) 





Celebrating 20 years

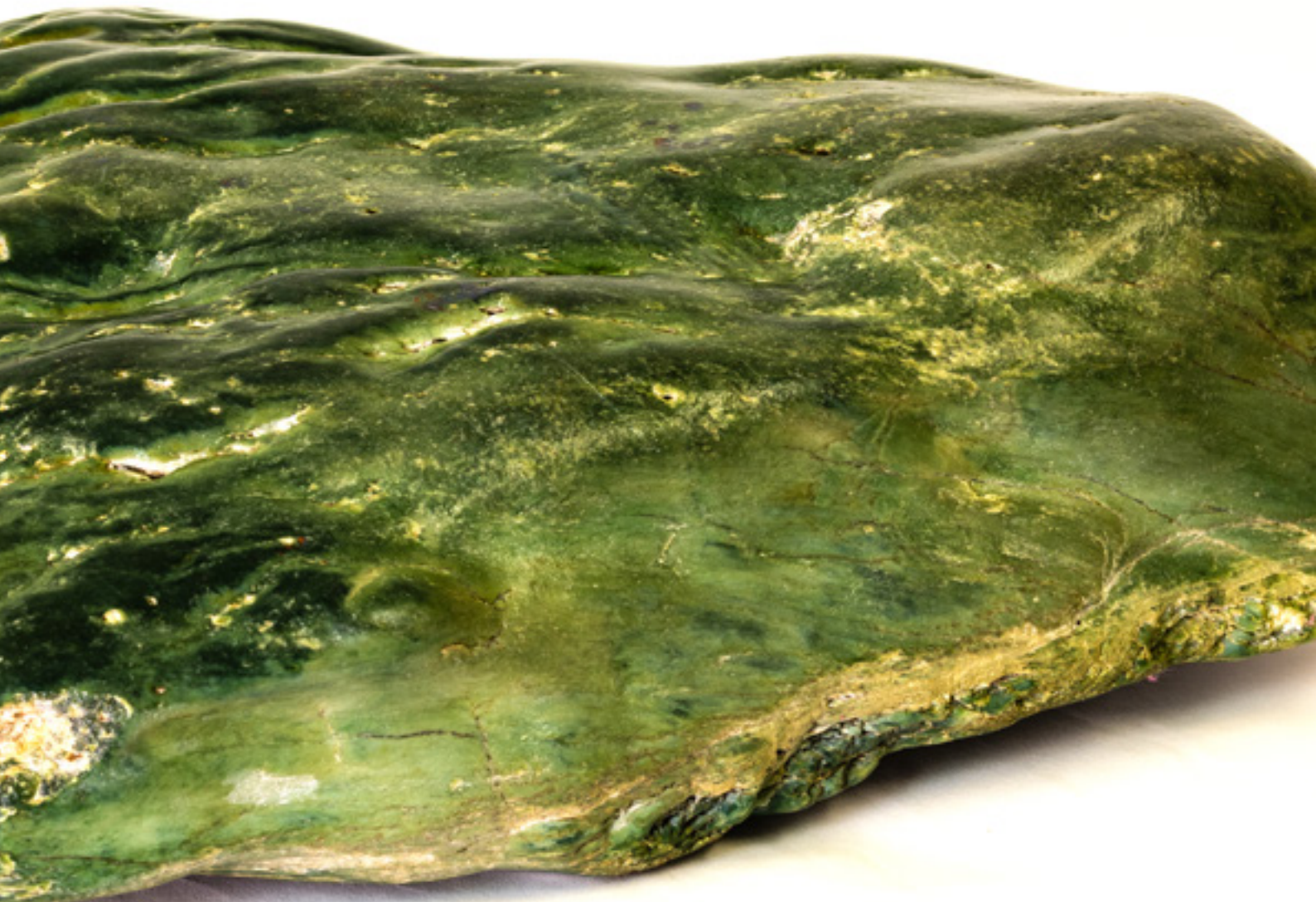
WHATUKURA: A bioengineered model of the human eye

In 2009, NPM supported a project led by Dr Jason Turuwhenua into developing a computer-based bioengineered model of the human eye to give greater insight into eye disease and treatments. The project was followed by further work using “augmented reality” or human-computer interaction in real time, the goal being to develop aids for people with poor vision.

[READ MORE](#) 

Tremolite, chromium and iron

New Zealand nephrite is largely made up of the mineral tremolite. In nephrite, the crystal structure of the tremolite is tight and interlinked, giving the rock immense strength – similar to steel. This toughness, along with its ability to be shaped, cut, and polished, meant that nephrite pounamu was favoured by Māori for tools, weapons and especially carving.



KOUNGA

OUR STRATEGIES

TE KUPENGA O MAI



We continue as a generous and committed network of Māori postgraduate and doctoral researchers spread across Aotearoa. Each of our 12 sites is facilitated by a MAI coordinator, who meets monthly via Zoom. Our regional coordinators facilitate a variety of activities in support of students including fortnightly meetings, and workshops, and they organise guest speakers and retreats, as well as attending the national MAI Conference.

HONO ATU HONO MAI

The impact of Covid-19 meant researchers needed an opportunity to strengthen connections within the MAI whānau. On 8 July, we continued the new tradition of holding a one-day symposium, Hono Atu Hono MAI: Growing MAI connections, to facilitate this.

During the conference, researchers gathered at MAI sites while participating simultaneously with the national hui via Zoom. We were honoured to have Professor Meihana Durie open our wānanga kōrero and this was followed by a series of workshops catering to the different needs of students on their various research journeys. The need to grow and sustain local and international Indigenous research connections was addressed by Professor Leonie Pihama and the conference closed with planning for our MAI Conference ki Wairaka in November.

MAI DOCTORAL CONFERENCE

The innovation and resilience of Māori and Indigenous postgraduate students was celebrated at the MAI Doctoral Conference held during November 17-20. Hosted by the newest addition to the whānau, MAI ki Wairaka (Unitec, Auckland), the four-day conference was the largest in 10 years, gathering 95 doctoral students together from Australia, Hawaii and across Aotearoa.

MAI began as a network to support Māori and Indigenous postgraduate students, the programme was tailored to doing just this. Our MAI whānau had not met in person in 18 months and it was a joy to reconnect kanohi ki te kanohi. Student presentations, whanaungatanga, hākari, music, waiata, inspirational kōrero from our speakers, including keynote, Papa Hōhepa Renata, and the opportunity to celebrate the success of our graduates ensued. Another highlight was our hīkoi to Ihumātao, where Pania Newton addressed our gathering, sharing the struggle and triumph to protect this ancient site.



MAI Hīkoi to Ihumātao to kōrero with Pania Newton

CELEBRATING NEW PHD RESEARCH FROM ACROSS THE MAI NETWORK

- Beverland, M. J. H. (2022). *Kaitiakitanga: Māori experiences, expressions, and understandings*. [Doctoral thesis, Massey University]. Massey Research Online. <http://hdl.handle.net/10179/17681>
- Borell, P. J. (2022). *PolySaturated: Illuminating the experiences of Polynesian athletes in professional rugby league*. [Doctoral thesis, University of Canterbury]. UC Research Repository. <https://hdl.handle.net/10092/104767>
- Brittain, E. (2022). *Ko wai, ko wairua: Narratives of wairua and wellbeing*. [Doctoral thesis, Massey University]. Massey Research Online. <http://hdl.handle.net/10179/17665>
- Campbell, J. D. (2022). *Development of non-invasive, optical methods for central cardiovascular and blood chemistry monitoring*. [Doctoral thesis, University of Canterbury]. UC Research Repository. <https://hdl.handle.net/10092/103757>
- Dais, T. N. (2022). *From triangles to rings: Colourful clusters of substituted naphthalenediols*. [Doctoral thesis, Massey University]. Massey Research Online. <https://hdl.handle.net/10179/17729>
- Eruera, A.-R. S. (2022). *Structural investigation of GII.4 human norovirus mature and precursor proteins*. [Doctoral thesis, University of Otago]. OUR Archive. <http://hdl.handle.net/10523/13792>
- Fitzmaurice, L. S. (2022). *Te Rito o Te Harakeke: Decolonising Child Protection and Children's Participation*. [Doctoral thesis, University of Otago]. OUR Archive. <http://hdl.handle.net/10523/13625>
- Haami, M. (2022). *He Whiringa Muka: The relationship between the Whanganui River, Marae, and waiata*. [Doctoral thesis, Victoria University of Wellington, Te Herenga Waka]. Open Access Te Herenga Waka-Victoria University of Wellington. <https://doi.org/10.26686/wgtn.19294628>
- Kewene-Doig, L. M. (2022). *He Kohinga Kōrero: A selected group of Māori musicians and performers' experiences of the 1960s through the Māori showband movement*. [Doctoral thesis, University of Otago]. OUR Archive. <http://hdl.handle.net/10523/12860>
- Niwa, T. (2022). *Problematizing Māori achievement in education policy: An exploratory mixed-methods study on teacher enactment of Ka Hikitia*. [Doctoral thesis, Massey University]. Massey Research Online. <https://hdl.handle.net/10179/17601>
- Peters, R. G. (2022). *Televised Sports Coverage in New Zealand: Between global capitalism and cultural citizenship*. [Doctoral thesis, Auckland University of Technology]. AUT Tuwhera OpenAccess. <http://hdl.handle.net/10292/15658>
- Reweti, A. (2022). *Mā te whiritahi, ka whakatutuki ai ngā pūmanawa ā tāngata = Together weaving the realisation of potential: Exploring the social, cultural and health benefits of whānau-centred initiatives*. [Doctoral thesis, Massey University]. Massey Research Online. <http://hdl.handle.net/10179/17890>
- Steadman, J. (2022). *The "perfect" gay man: An exploration of perfectionism with gay men in New Zealand*. [Doctoral thesis, Massey University]. Massey Research Online. <http://hdl.handle.net/10179/17598>
- Taiapa, K. (2022). *Te Moeone Mārakai: Connection, ahi kā and healing*. [Doctoral thesis, Massey University]. Massey Research Online. <http://hdl.handle.net/10179/17353>
- Taite-Gunn, T. R. (2022). *Wairua, affect and national commemoration days*. [Doctoral thesis, Massey University]. Massey Research Online. <http://hdl.handle.net/10179/17616>
- Van Zuylen, E. M. (2022). *Novel inhibitors for combating obligate anaerobic pathogens*. [Doctoral thesis, University of Otago]. OUR Archive. <http://hdl.handle.net/10523/12848>
- Waipara, Z. R. S. (2022). *Te Mana-A-Māui / The Magic Of Māui: Transforming and shapeshifting pūrākau Māori*. [Doctoral thesis, Auckland University of Technology]. AUT Tuwhera OpenAccess. <http://hdl.handle.net/10292/15621>

MAI WHĀNAU

Aoraki

Sheree Jahnke-Waitoa

Aronui

Deborah Heke, Zak Waipara, Prof Pare Keiha

Eastern Institute of Technology

Prof David Tipene-Leach, Sharon Fabish

Manawatū

Dr Monica Koia, Prof Meihana Durie

Otago

Prof David Baxter, Dr Rachel Sizemore

Pōneke

Nayte Davis and Mike Ross

Tāmaki

Abigail McClutchie, Olivia Blyth,
Assoc Prof Te Kawehau Hoskins

Te Tai Tokerau

Dr Tania Cliffe-Tautari

Te Wānanga o Aotearoa

Prof Leonie Pihama, Joni Gordon

Waikato

Dr Sarah Jane Tiakiwai

Wairaka

Keisha Rawiri, Dr Hinekura Smith

Waitaha

Unaiki Melrose



KANAPU



A new Ngā Pae o Te Māramatanga initiative, Kanapu was announced by Minister Ayesha Verrall during her visit in August 2022. Kanapu is a Māori-led initiative on a mission to ignite research, science and innovation talent and leadership across Te Ao Māori. Māori researchers, scientists and knowledge

holders are fundamental to a vibrant RSI system but the evidence shows Māori in various spaces and disciplines are largely undervalued and unsupported. Kanapu – which means lightning or instantaneous glow – seeks to strike at the obstacles that block Māori pathways into the RSI system and will connect and nurture a diverse puna of Māori talent in the wider RSI system and expand the impact of Vision Mātauranga.

“Kanapu is a further way the Government is strengthening the benefits that Māori knowledge, culture, values and worldview bring to the research system. This initiative will enhance the employment outcomes of Māori in the research workforce, and will benefit the whole research workforce.” (Research, Science and Innovation Minister Dr Ayesha Verrall).

Over six years Kanapu will work with Māori researchers, scientists and knowledge-holders to design bespoke initiatives to meet the programme’s goals to:

- strengthen connections between the RSI system and hapū, iwi, and Māori communities
- support Māori scientists, researchers and knowledge holders to thrive as Māori within the RSI system
- provide opportunities for Māori scientists, researchers and, knowledge holders to access the right resources and support to develop their talent and leadership skills
- leverage and develop customised tools and resources to support RSI system navigation

The establishment of Kanapu is a natural extension of the capacity and capability-building NPM has engaged in over the last 20 years. Kanapu will complement our existing programme and allow for more visible pathways towards research careers. Kanapu will allow us to deepen connections with our communities and firmly locate Māori aspirations and priorities at its heart.

“Ngā Pae is excited to be taking this next step to building the foundations for flourishing Māori futures. There are huge untapped RSI opportunities for our communities – Kanapu will help realise them” (Pou Matarua | Co-Director Professor Tahu Kukutai)

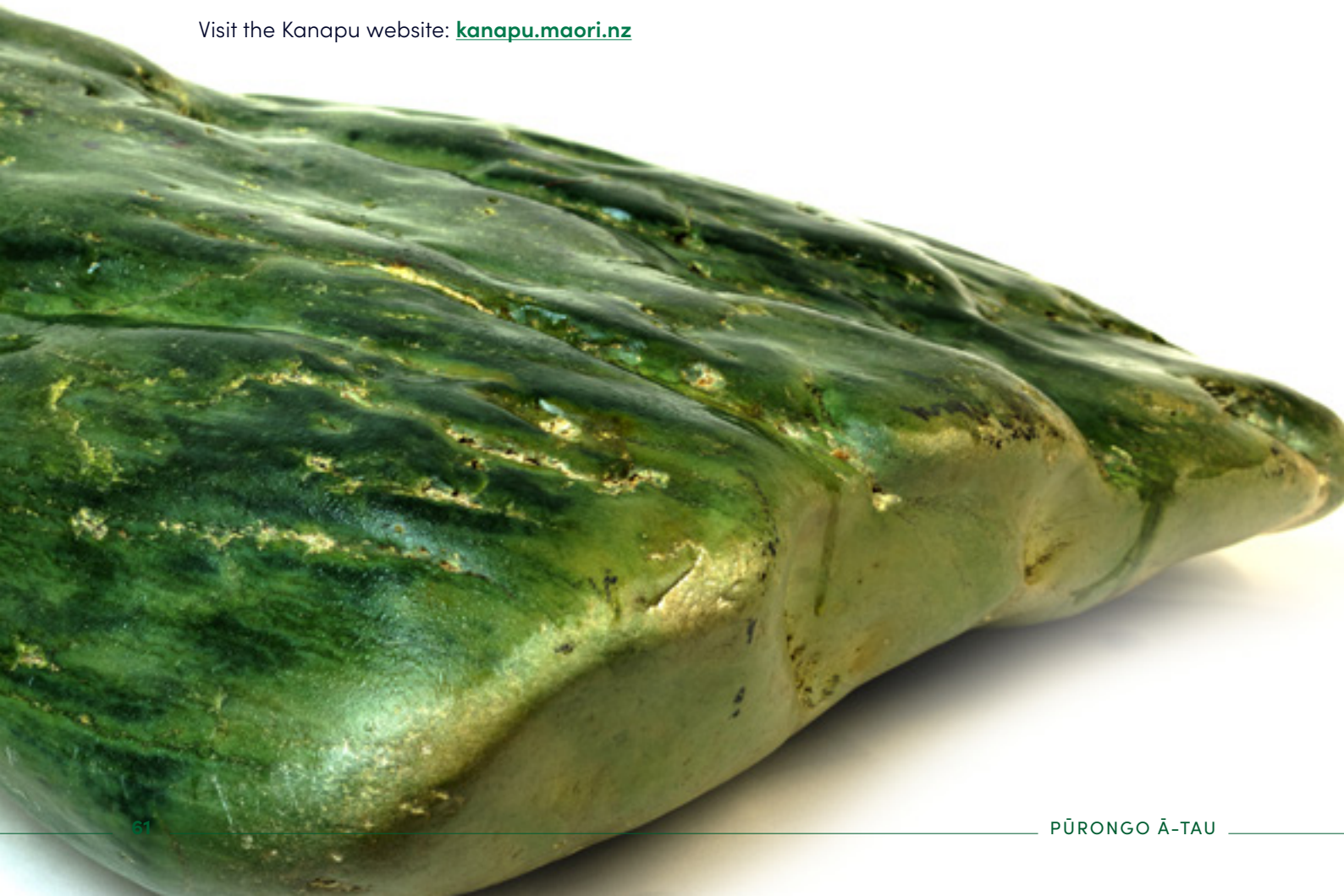




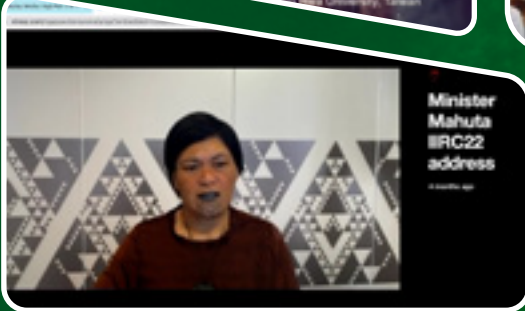
Minister Verrall's visit coincided with the announcement of Kanapu – a 6-year programme funded by MBIE to accelerate Māori RSI talent, leadership and system navigation.

Left-Right: Willy-John Martin (MBIE), Marie-Chanel Berghan (NPM Pouhere Matua), Vanessa Clark (NPM Pouhere Kanapu), Hon Dr Ayesha Verrall, Prof Pare Keiha (NPM Board), Ngā Pou Matarua (NPM) Tahu Kukutai and Linda Waimarie Nikora.

Visit the Kanapu website: kanapu.maori.nz



BIENNIAL INTERNATIONAL INDIGENOUS RESEARCH CONFERENCE 2022 (ONLINE)



KNOWLEDGE SHARING

7 BOOK CHAPTERS

BOOKS 7

173 CONFERENCE PRESENTATIONS

JOURNAL ARTICLES 104

7 KEYNOTES

MULTIMEDIA 8

19 KOUNGA
– Professional Excellence Series

RESEARCH REPORTS 3

13 SYMPOSIUM

THESIS 40

11 WĀNANGA

WĀNANGA PAETUKUTUKU 3

7 WEBINARS

WRITING RETREATS 3

ALTERNATIVE: AN INTERNATIONAL JOURNAL OF INDIGENOUS PEOPLE



ALTERNATIVE CO-EDITORS' REPORT

AlterNative is NPM's international peer-reviewed interdisciplinary journal produced in partnership with SAGE Publishing. *AlterNative* publishes four issues per year.

NPM and SAGE Journals continue to build the global reputation and profile of *AlterNative*, and focus on citations in Clarivate

Analytics' Web of Science and Scopus, as well as a number of other metrics and ranking systems. In November 2022, the journal was added to the MLA International Bibliography, the most widely distributed humanities database which lists over 1.5 million bibliographies.

As co-editors of *AlterNative*, we continue to take great pride in the collective strength of the journal and its authors, and the contribution it makes to disseminating creative, culturally-based, evidence-informed solutions and understandings of critical issues. The journal continues not only to demonstrate international leadership and significant growth but also to inform and shape Indigenous scholarship globally.

The scope of the articles speaks to the depth and breadth of Indigenous research and the critical role that Ngā Pae o te Māramatanga plays, through *AlterNative*, in developing and supporting Indigenous academic and research infrastructure.

The disciplinary breadth of submissions in 2022 underscores the interdisciplinary and transdisciplinary nature of the intellectual enterprise, 79 articles that included looking at Te Pā Auroa nā Te Awa Tupua, the seven-generation concentric circular genogram; culturally specific methodologies such as Tangata Hauroa, Mā'ohi nui, One Dish – One Spoon, and Dadirri; Indigenous models for planetary beauty, economics and finance; COVID-19 Indigenous responses in food security and other areas; persistence in language work, and mapping value politics for health equity.

The 79 published papers were from 22 countries and one US territory and represented research from Oceania (35), North America (19), Asia (10), Africa (7), Latin America (4), and Scandinavia (4), demonstrating that *AlterNative* is not only the international flagship of Ngā Pae o te Māramatanga but represents a taonga of global Indigenous research.



“INDIGENOUS SOVEREIGNTY” AND RIGHT TO SELF-DETERMINATION IN INTERNATIONAL LAW: A CRITICAL APPRAISAL

The most downloaded article submitted by international contributors was “Indigenous sovereignty” and right to self-determination in international law: A critical appraisal” by Rashwet Shrinkhal (India). This article investigates the struggle of Indigenous peoples to be recognised as “peoples” and their journey from being an “object” to a “subject” of international law and their struggle to craft their own sovereign space. The article aims to both embrace and comprehend the concept of “indigenous sovereignty” and argues that it does not have a fixed contour but essentially confronts the idea of “empire uniformity.” The article promotes “indigenous sovereignty” as the right to self-determination and challenges the political and moral authority of states controlling Indigenous populations within their territory.

DIGITAL INNOVATION AND FUNERAL PRACTICES: MĀORI AND SAMOAN PERSPECTIVES DURING THE COVID-19 PANDEMIC

The most downloaded contribution by Aotearoa authors was “Digital innovation and funeral practices: Māori and Samoan perspectives during the COVID-19 pandemic” by Byron William Rangiwai and Dion Enari. This submission was in response to a call for papers on COVID-19. The report discussed how the pandemic had disrupted traditional funeral processes for Māori and Samoan peoples and showed how their collective ways of mourning were particularly affected, as social distance restrictions and travel bans meant they were unable to physically gather in large numbers. Despite the disruption caused by COVID-19, digital innovation enabled these groups to remain socially connected, regardless of physical distance. Through the digital space, funerals were still able to be a communal time of mourning, support and comfort. As insider researchers, they presented their stories, chants and oratory during times of sorrow, while centring their collective digital resilience.

Professor Tracey McIntosh

Waipapa Taumata Rau
University of Auckland

Dr Carwyn Jones

Te Whare Wānanga o Raukawa

MAI JOURNAL: A NEW ZEALAND JOURNAL OF INDIGENOUS SCHOLARSHIP



MAI *Journal* publishes multidisciplinary peer-reviewed articles that critically analyse and address Māori, Indigenous and Pacific issues in the context of Aotearoa. The leading NZ journal of Indigenous Scholarship prides itself on being Open Access (accessible to all) and we continue to have researchers and new scholars who continue to publish articles in our journal.

MAI *Journal* is a great platform for helping flourishing futures for new and emerging researchers, students progressing to publishing with the support of their academic peers and research leaders, thereby giving more opportunities to develop and refine research and writing skills. It is also a vehicle for experienced authors, academics and researchers to continue publishing their own work in a unique Indigenous-focused New Zealand owned and operated journal.

MAI *Journal's* aim is to continually grow and progress the academic capabilities of future authors and encourage the progression of publishing their own creative and researched work, while also supporting other authors through the editorial and peer review process. MAI *Journal* received 70,925 page views from January to December 2022.

The first article in Issue 11 Volume 1 draws attention to current issues caused by Earth 'Climate Change' with relevance to Aotearoa and recurring damaging environmental events. This prominent topic has been the basis for the article from authors Bridgette Masters-Awatere, Patricia Young and Rebekah Graham, entitled "State agencies and researchers engaging with Indigenous communities on climate change adaptation planning: A systemic review."

This article identified "that climate change planning relies on future-oriented risk, that those vulnerable to climate change are disempowered by discussions and that recognising the impacts of colonisation must be taken into consideration in change adaptation planning."

"Community engagement aims to establish partnering relationships with Indigenous communities and researchers during all phases of a project. This includes decision-making, shared communication and relationships that build capacity of the communities and the researchers. Examining community engagement considers the degree to which an Indigenous community contributes to shaping institutional responsiveness planning, policy and strategic development."

The second article from Issue 11 Volume 2 entitled "Tuia I Roto: A qualitative exploration of Māori cultural embeddedness" by authors Ririwai Fox, Gloria Fraser, Tia Neha and Paul E. Jose discusses "cultural notions of identity and an introduced concept of cultural embeddedness as a framework for understanding the

collective expectations derived from cultural values, practices and beliefs and how these facets of culture are integrated into identity and enacted in everyday behaviours.”

Further articles published in 2022, draw on studies and research of other issues relevant to Indigenous Aotearoa and Pasifika.

The journal co-editors would like to thank Associate Professor Ocean Mercier and Professor Melinda Webber for their unfaltering work in raising the profile of *MAI Journal* during their time as co-editors, which spanned most of the pandemic. Together, this formidable pair widened the reach of our journal considerably, most notably among early career academics and our tuakana of the wider Pacific who call Aotearoa home. We share their enthusiasm for growing the dissemination opportunities for scholars to share their research beyond only the written form, and look forward to seeing that progress in 2023.

We are both proud to continue the concrete commitment *MAI Journal* made to the bookshelf of Māori and Indigenous scholarship at its inception. Our contributors continue to respond critically to the turbulent shifts of our time, when sound and safe repositories of robust thought are so desperately needed. The world of academia is changing, and our audience deserves a scholarly presence that aims to navigate new waters with a brave morality. Alongside our contributors, we will do just that. Tū MAI!

Associate Professor Te Kawehau Hoskins

Waipapa Taumata Rau
University of Auckland

Dr Vincent Olsen-Reeder

Te Herenga Waka
Victoria University of Wellington



WHAKANUIA TE ANGITŪ

CELEBRATING SUCCESS

NEW ZEALAND HONOURS

ONZ

Tā Stephen (Tipene) Gerard O'Regan Kt, of Christchurch. For services to New Zealand

[READ MORE](#)

CNZM

Ms Lisa Marie Reihana, MNZM, of Auckland. For services to the arts

[READ MORE](#)

KNZM

Tā Patrick Wahanga Hohepa, of Kaikohe. For services to Māori culture and education

[READ MORE](#)

MNZM

Professor Ella Yvette Henry, of Auckland. For services to Māori, education and media

[READ MORE](#)

Professor Jacinta Arianna Ruru, of Port Chalmers. For services to Māori and the law

[READ MORE](#)

ROYAL SOCIETY TE APĀRANGI AWARDS



TE PUĀWAITANGA RESEARCH EXCELLENCE AWARD

**Dr Waikaremoana
Waitoki**, (Ngāti Hako,
Ngāti Mahanga)
University of Waikato

[MORE](#)



TE KŌPŪNUI MĀORI RESEARCH AWARD

Dr Melissa Derby
(Ngāti Ranginui)
University of Waikato



METGE MEDAL

**Professor Yvonne
Underhill-Sem**
(Rarotonga, Niue)
University of Auckland



TE KŌPŪNUI MĀORI RESEARCH AWARD

Dr Tara McAllister
(Te Aitanga ā Māhaki)
*Victoria University of
Wellington*

NEW PROFESSORS

UNIVERSITY OF OTAGO

Professor Anne-Marie Jackson

Ngāti Whātua, Ngāpuhi, Ngāti Kahu o Whangaroa, Ngāti Wai

Professor Louise Parr-Brownlie

Ngāti Maniapoto me Te Arawa

Professor Emma Wyeth

Kāi Tahu, Te Ātiawa, Ngāti Tama, Ngāti Mutunga

UNIVERSITY OF WAIKATO

Professor Tom Roa

Ngāti Maniapoto, Waikato

Professor Sandy Morrison

Ngāti Maniapoto, Ngāti Rarua, Te Arawa

Professor Kura Paul-Burke

Ngāti Awa, Ngāti Whakahemo

MASSEY UNIVERSITY

Professor Eloise Jillings

Ngāti Maru

Professor Matt Roskruge

Te Ātiawa, Ngāti Tama

UNIVERSITY OF AUCKLAND

Professor Melinda Webber

Ngāti Hau, Ngāti Kahu, Ngāpuhi and Ngāti Whakaue

AUCKLAND UNIVERSITY OF TECHNOLOGY

Professor Georgina Stewart

Ngāpuhi

Professor Ella Henry

Ngātikahu ki Whangaroa, Ngāti Kuri, Te Rārawa

Professor Jacquie Kidd

Ngāpuhi



SCHOLARSHIP AND AWARD RECIPIENTS

FULBRIGHT-NGĀ PAE O TE MĀRAMATANGA SCHOLAR AWARD

Will Flavell

Ngā Puhi, Ngāti Whatua,
Tainui, Ngāti Maniapoto

[READ MORE](#) 

FULBRIGHT-NGĀ PAE O TE MĀRAMATANGA GRADUATE AWARD

Nikki Barrett

Ngāti Hauā, Ngāti Porou,
PhD candidate at the University of Waikato

[READ MORE](#) 

NPM recognises and congratulates all the Māori Fulbright recipients

- **Alehandrea Raiha Manuel**
Ngāti Pōrou – Fulbright NZ Science and Innovation Graduate Award [MORE](#)
- **Ngarangi Haerewa**
Te-Whanau-ā-Apanui – Fulbright NZ General Graduate Award [MORE](#)
- **Liam Wooding**
Ngāti Hinearō, Ngāti Tuera/ Te Ati Haunui-a-Pāpārangi – Fulbright NZ General Graduate Award [MORE](#)
- **Zoë Henry**
Ngāpuhi, Ngāti Kahu, Makefu – Niue – Fulbright NZ General Graduate Award [MORE](#)

BORRIN — NGĀ PAE O TE MĀRAMATANGA SUMMER LEGAL RESEARCH INTERNSHIP AWARDS

Nikorima Te Iwi Ngaro Nuttall
Raukawa

Noah Piripi Kemp
Te Āti Awa, Ngāpuhi, Ngāti Tūwharetoa

BORRIN — NGĀ PAE O TE MĀRAMATANGA POSTGRADUATE SCHOLARSHIP AWARDS

Yasmin Olsen
Ngāpuhi — Te Ihutai, Te Rarawa,
Ngāti Whātua, Ngāti Tīpā

Holly Reynolds
Te Āti Haunui-a-Pāpārangī, Ngāti Maniapoto

Rachael Evans
Ngāti Tama, Ngāti Pamoana, Ngāti Pākehā

Gabriella Makerita Hinetu Brayne
Ngāti Maniapoto, Falefā

Maryann Panoho
Ngāpuhi

CAWTHRON — NGĀ PAE O TE MĀRAMATANGA TE PĪTAU WHAKAREI KARAHĪPI RESEARCH INTERNSHIP AWARDS

Toiroa Whaanga-Davies
Ngāti Rakaipaaka, Ngāti Kahungunu,
Ngāti Rehua, Ngāti Wai

NEW HORIZONS FOR WOMEN'S TRUST — NGĀ PAE O TE MĀRAMATANGA WAHINE ORA AWARD

Maraea Rakuraku
Tūhoe and Ngāti Kahungunu



TE WHAKAPĀ MAI CONTACT

Physical Address

Ngā Pae o te Māramatanga
University of Auckland
Rehutai Building 253
16 Wynyard Street
Auckland, New Zealand

Postal Address

Ngā Pae o te Māramatanga
University of Auckland
Waipapa Marae Complex
Private Bag 92019
Auckland Mail Centre
Auckland 1142, New Zealand

www.maramatanga.ac.nz

[facebook.com/ngapaeotemaramatanga](https://www.facebook.com/ngapaeotemaramatanga)

twitter.com/NgaPaeotM

[instagram.com/nga_pae](https://www.instagram.com/nga_pae)

E info@maramatanga.ac.nz

T +64 9 923 4220



Ngā Pae o te Māramatanga, Pūrongo Ā-Tau Annual Report 2022, designed by Ariki Creative.

Pounamu crafted and provided by Master Carver Fayne Robinson.

TE TAHA PŪTEA

FINANCIALS

Ngā Pae o te Māramatanga Tertiary Education Commission Financial Report

NPM's 2022 financial statement is presented below as required by Tertiary Education Commission reporting. The financial statement has been prepared and approved by the University of Auckland and NPM Board and verified as an accurate and true set of accounts.

2022 ACTUAL

Funding received from TEC	5,000,000
Surplus/Deficit carried forward	1,742,023
Total CoRE funding	6,742,023

SALARIES

Director and Principal Investigators	564,439
Associate Investigators	30,839
Post Doctoral fellows	12,697
Research/Technical Assistants	21,218
Others	583,575
Total Salaries & Salary Related Costs	1,212,768

OTHER COSTS

Indirect Costs:

Overheads	1,459,114
-----------	-----------

DIRECT COSTS

Project Costs	97,623
Travel	33,433
Postgraduate Students	154,883
Subcontractor(s) Specified	190,395
Extraordinary Expenditure (specified)	-
Total Other Costs	1,935,448
Total Expenses	3,148,216
Net Surplus/(Deficit)	3,593,807

Other Income	766,500
Other Expenses	749,985
Net Surplus/(Deficit) including Other Income	3,610,322

CENTRE SUMMARY

(1 JANUARY TO 31 DECEMBER 2022)

BROAD CATEGORY	DETAILED CATEGORY	YR 2 (2022)
Value of CoRE funding from TEC (\$M)		\$5,000,000
FTEs by category	Principal investigators	19.20
	Associate investigators	3.46
	Postdoctoral fellows	1.70
	Research technicians	0.00
	Administrative/support	7.30
	Research students	8.05
	Total	39.71
Headcounts by category	Principal investigators	64
	Associate investigators	50
	Postdoctoral fellows	2
	Research technicians	0
	Administrative/support	9
	Student Researcher	36
	Total	161
Peer-reviewed research outputs by type	Books	7
	Book chapters	7
	Journal articles	104
	Invited conference keynote/presentation	160
	Prizes and distinctions	9
	Other (PBRF category)	110
	Total	397
Commercial activities	Number of licences	-
	Income from licences	-
	Patent applications	-
	Patents granted	-
	Invention disclosures	-
	Spinouts (note whether cumulative or actual)	-
	Capitalisation value of spinouts	-
Students studying at CoRE by level	Doctoral degree	113
	Masters	118
	Other	41
	Total	272
Number of students completing qualifications by level	Doctoral degree	46
	Other	47
	Total	93

PŪRONGO Ā-TAU

ANNUAL REPORT 2022

